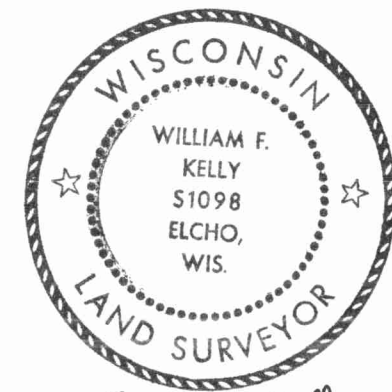


CERTIFIED LAND CORNER RESTORATION

Index No. 4-1



*William F. Kelly*

State of Wisconsin }  
County of LANGLADE } ss.

History of original corner establishment:

I WILLIAM F. KELLY, do hereby certify that on the 26<sup>TH</sup> day of NOVEMBER, 1975, I found evidence of the 5<sup>1</sup>/<sub>16</sub> corner of SECTION 31 & 36 Township 32, North, Range 8E & 9E, Fourth Principal Meridian, as described hereon; and that from this evidence I established a new monument and accessories as described hereon to perpetuate the original location of this corner.

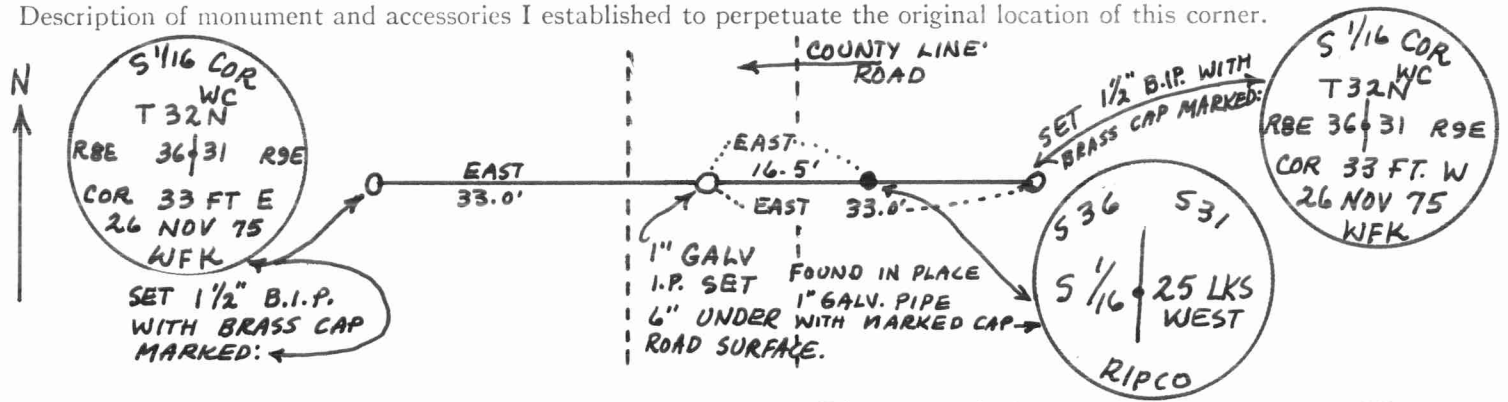
Description of corner evidence found:

LOCATED WITNESS COR TO 5<sup>1</sup>/<sub>16</sub> CORNER SECTION 36 & 31 T.32N.-R.8E & 9E. FROM SURVEY MAP AND NOTES OF 1960. CORNER MISSING.

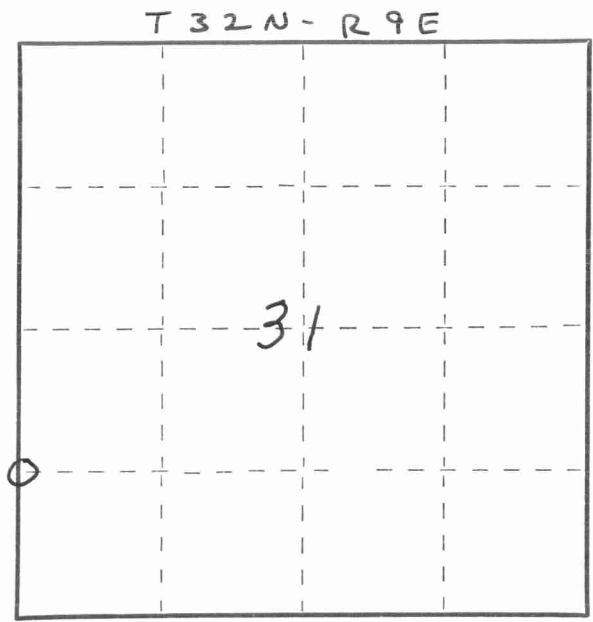
Resident witnesses:

.....  
.....  
.....

Description of monument and accessories I established to perpetuate the original location of this corner.



FORM 985 H. C. MILLER CO., MILWAUKEE



○ = Corner monument restored.

Dated at ELCHO, Wis., this 26<sup>TH</sup> day of NOVEMBER, 1975.

Signature William F. Kelly Title REGISTERED LAND SURVEYOR Registration No. 51098  
(County Surveyor, Registered Land Surveyor, or other duly authorized official)

Office of Register of Deeds, County of ....., I hereby certify that the within instrument was filed in this office for record on the ..... day of ....., 19..... at ..... o'clock ..... M.

.....  
(Register of Deeds)

By ..... Deputy