

CERTIFIED LAND CORNER RESTORATION

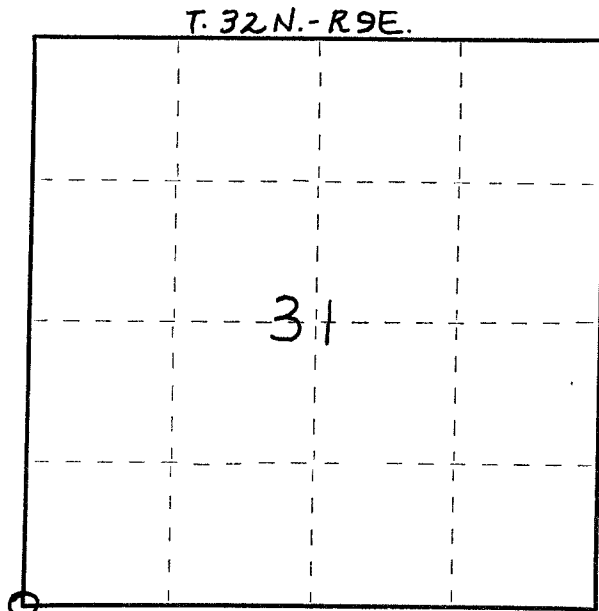
Index No. Z-1

State of Wisconsin }  
County of LANGLADE } ss.

I WILLIAM F. KELLY, do hereby certify that on the 26<sup>TH</sup> day of NOVEMBER, 1975, I found evidence of the SECTION corner of SECTIONS 36, 31, 1, 6 Township 31, North, Range BE & 2E, Fourth Principal Meridian, as described hereon; and that from this evidence I established a new monument and accessories as described hereon to perpetuate the original location of this corner.

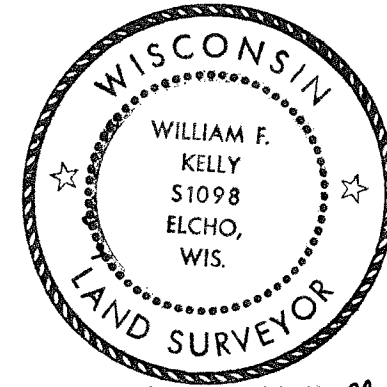
Resident witnesses:

FORM 985 H. C. MILLER CO., MILWAUKEE



○ = Corner monument restored.

History of original corner establishment:

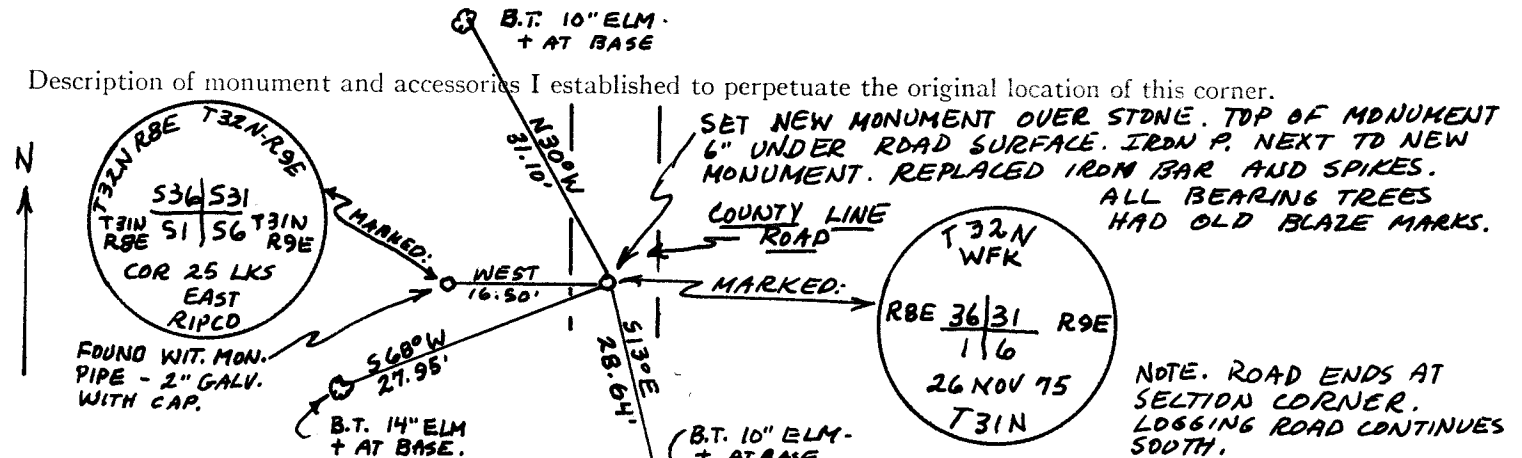


*William F. Kelly*

Description of corner evidence found:  
LOCATED SECT. COR. 36/31 T. 32 N. - R. 8 E. AND R. 9 E. FROM 1960 SURVEY MAP  
1/6 T. 31 N. - R. 9 E. AND R. 9 E.

AND NOTES. FOUND FIELD STONE WITH + MARK 36" UNDER ROAD SURFACE. ALSO FOUND IRON BAR AND SPIRES IN EXCAVATION.

Description of monument and accessories I established to perpetuate the original location of this corner.



Dated at ELCHO, Wis., this 26<sup>TH</sup> day of NOVEMBER, 1975

Signature William F. Kelly Title REG. LAND SURVEYOR Registration No. 51098  
(County Surveyor, Registered Land Surveyor, or other duly authorized official)

Office of Register of Deeds, County of \_\_\_\_\_, I hereby certify that the within instrument was filed in this office for record on the \_\_\_\_\_ day of \_\_\_\_\_, 19\_\_\_\_ at \_\_\_\_\_ o'clock \_\_\_\_\_ M.

(Register of Deeds)

By \_\_\_\_\_ Deputy