

CERTIFIED LAND CORNER RESTORATION

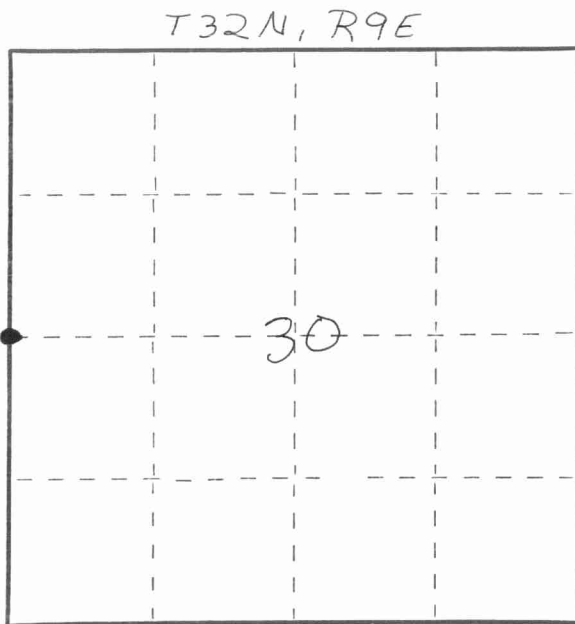
Index No. T-1

State of Wisconsin } ss.
County of LANGLADE

I WILLIAM F. KELLY, do hereby certify that on the 26th day of MAY, 19 81, I found evidence of the WEST 1/4 corner of SECTION 30 Township 32 North, Range 9 EAST, Fourth Principal Meridian, as described hereon; and that from this evidence I established a new monument and accessories as described hereon to perpetuate the original location of this corner.

Resident witnesses:

.....
.....
.....



○ = Corner monument restored.

History of original corner establishment:

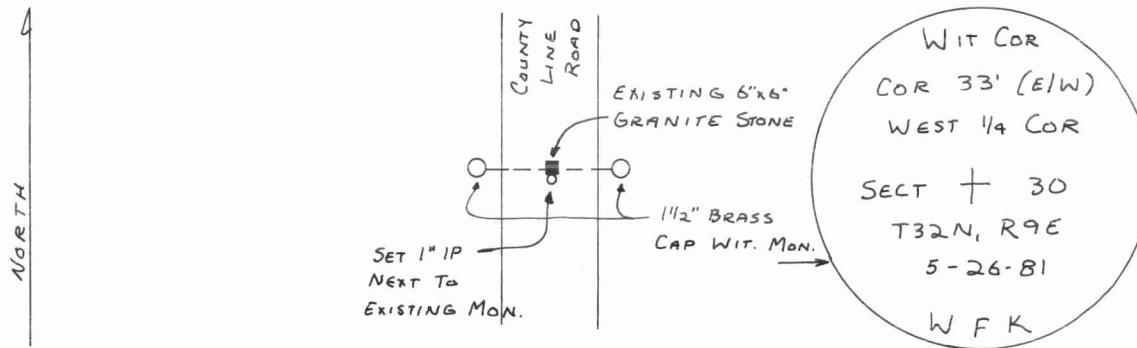
ORIGINAL CORNER ESTABLISHED BY HIRAM C. FELLOWS IN SEPT., 1860. 6" x 6" GRANITE MONUMENT SET ON RESURVEY OF LINCOLN COUNTY IN 1930'S BY LINCOLN COUNTY HWY. DEPT.

Description of corner evidence found:

6" x 6" GRANITE MONUMENT FOUND IN PLACE.

SET 1" IRON PIPE NEXT TO EXISTING MONUMENT AND 2 - 1 1/2" x 42" BLACK IRON PIPES WITH BRASS CAP WITNESS MONUMENTS.

Description of monument and accessories I established to perpetuate the original location of this corner.

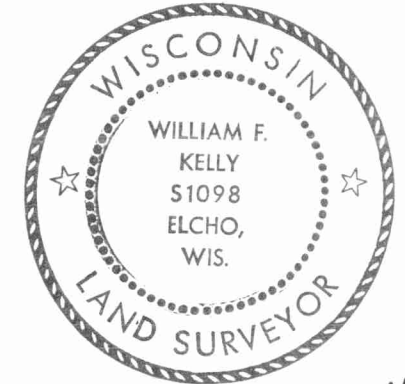


Dated at ELCHO, Wis., this 26th day of MAY, 19 81

Signature: WILLIAM F. KELLY Title: COUNTY SURVEYOR Registration No. 1098
(County Surveyor, Registered Land Surveyor, or other duly authorized official)

Office of Register of Deeds, County of _____, I hereby certify that the within instrument was filed in this office for record on the _____ day of _____, 19 _____ at _____ o'clock _____ M.

.....
(Register of Deeds)
By..... Deputy



William F. Kelly

FORM 985 H. C. MILLER CO., MILWAUKEE