

CERTIFIED LAND CORNER RESTORATION

Index No. V-1

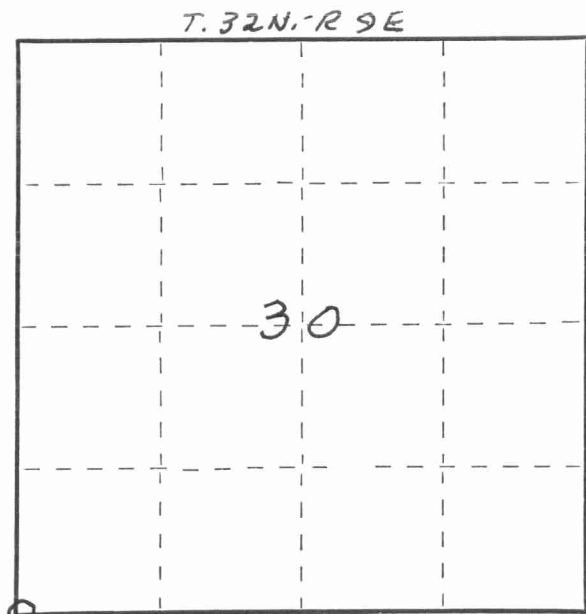
State of Wisconsin }  
 County of LANGLADE } ss.

I WILLIAM F. KELLY, do hereby certify that on the 5<sup>TH</sup> day of DECEMBER, 1975, I found evidence of the SECTION corner of SECTIONS 25, 30, 36 & 31 Township 32, North, Range 8 & 9 E, Fourth Principal Meridian, as described hereon; and that from this evidence I established a new monument and accessories as described hereon to perpetuate the original location of this corner.

Resident witnesses:

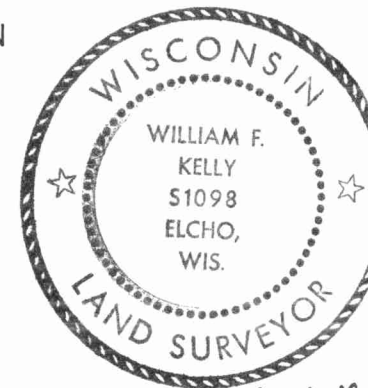
LE ROY REMINGTON

FORM 985 R. G. MILLER CO., MILWAUKEE



○ = Corner monument restored.

History of original corner establishment:

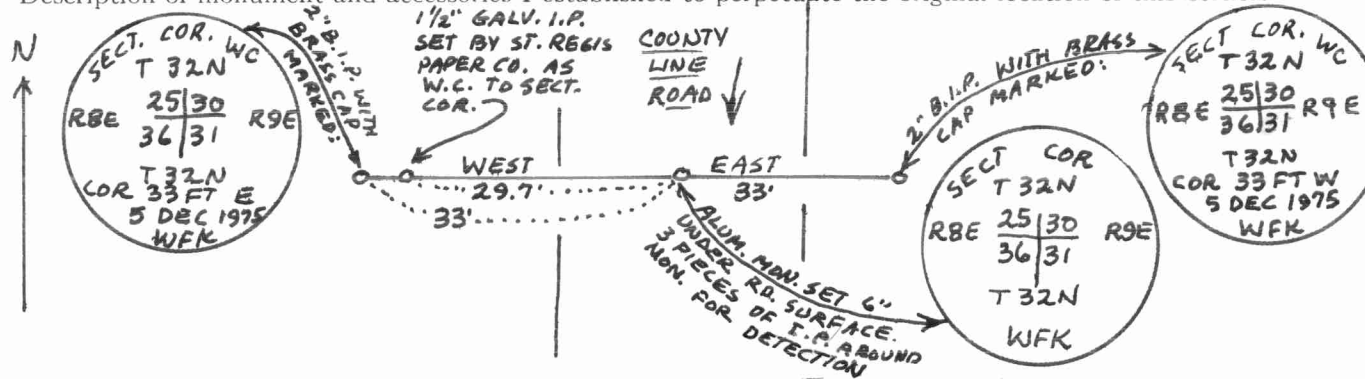


*William F. Kelly*

Description of corner evidence found:

**FOUND WITNESS CORNER FROM SURVEY NOTES BY ST. REGIS PAPER COMPANY ON CONTROL SURVEY FOR SECTION 36 - T. 32N. - R. 8E RAN IN 1965. RESIDENT WITNESS ADVISED THAT ORIGINAL STONE HAD BEEN REMOVED AND RESET BY ROAD CREW IN THE 1930'S. STONE COULD NOT BE FOUND AT A DEPTH OF 4' BELOW PRESENT ROAD SURFACE.**

Description of monument and accessories I established to perpetuate the original location of this corner.



Dated at ELCHO, Wis., this 5<sup>TH</sup> day of DECEMBER, 1975.

Signature William F. Kelly Title REGISTERED LAND SURVEYOR Registration No. 51098  
 (County Surveyor, Registered Land Surveyor, or other duly authorized official)

Office of Register of Deeds, County of \_\_\_\_\_, I hereby certify that the within instrument was filed in this office for record on the \_\_\_\_\_ day of \_\_\_\_\_, 19\_\_\_\_ at \_\_\_\_\_ o'clock \_\_\_\_\_ M.

\_\_\_\_\_  
 (Register of Deeds)

By \_\_\_\_\_ Deputy