

LANGLADE COUNTY U.S. PUBLIC LAND CORNER RESTORATION

The West 1/4 corner of Section 19, T 32 N., R 9 E, Langlade County, WI.

3208242000

Corner was: (check all that apply)

- Restored through acceptance of an obliterated evidence location.
- Restored through acceptance of a found perpetuated location.
- Determined to be lost and re-established through proportionate methods.
- Show bearings and distances to PLSS corners used for proportioning, and show original distances).
- Restored/recovered/re-established in a location that differs from a previously established position.
- (Show difference in plan view below).
- Check here if additional information is shown on the reverse side of this form.

Describe record evidence, recovered physical evidence, occupational evidence, testimonial evidence and all other evidence considered in the recovery/restoration of the corner.

The original corner was established in 1851 by James M. Marsh. Original bearing trees: hemlock, 12", S10°E, 42 lks., and a sugar, 10", N70°W, 28 lks. In July, 1918, W.C. Weby set a stone with "+" and surveyed the 1/4 line to the East. In 1921, Malcolm Hutchinson surveyed the 1/4 line to the East, but didn't describe this corner. In 1981, former surveyor Wm. Kelly found 6" x 6" granite stone for the corner. He replaced it with a 2" x 18" iron and set 1 1/2" iron pipe witness monuments 33' E & W of the corner. 11/08/99 Dave Tlusty, Dean Williams found the 2" iron pipe down 0.7' in the road and found one Kelly witness monument to the West in good condition. Accepted the 2" iron pipe found as the best evidence of the corner location and perpetuated it as shown below.

Physical description of the monument set:

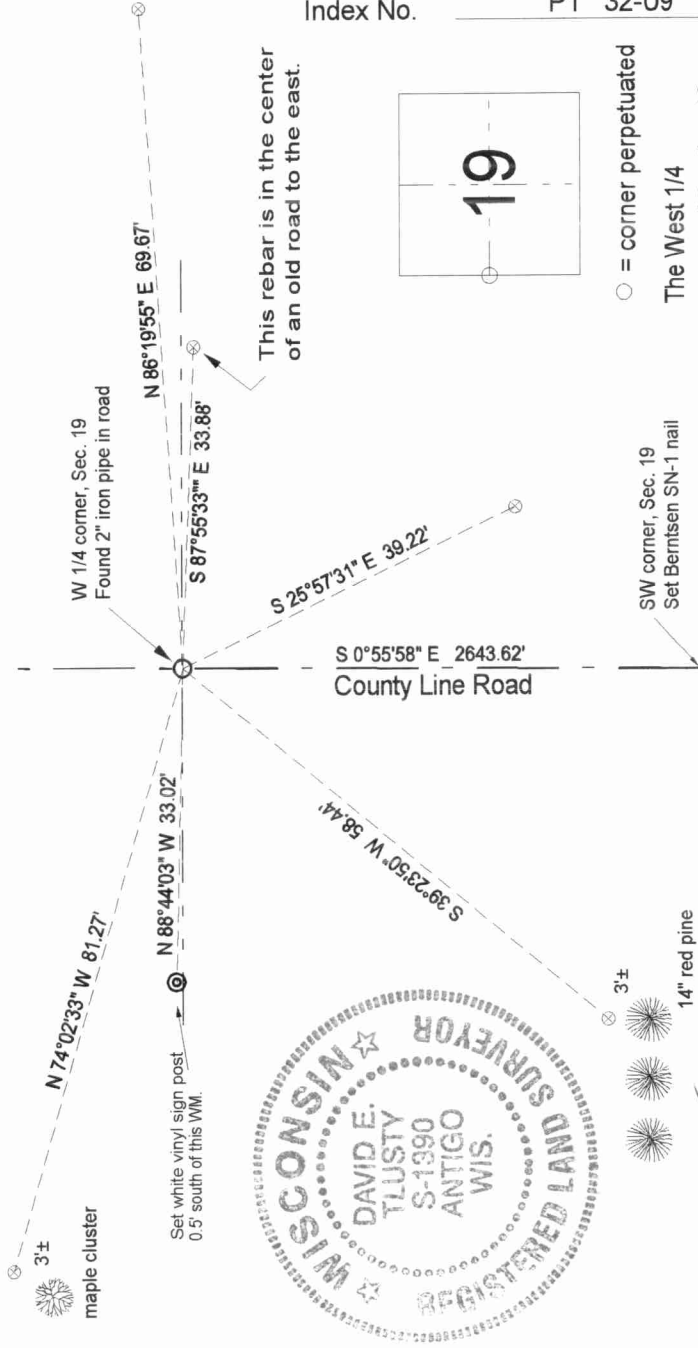
Left existing 2" iron pipe in place as found.

Describe the accessories used to perpetuate the corner. Include a plan view drawing and accessories found/set. Describe measuring point on bearing trees. Show any topographic features that would aid in future recovery of the corner.

LEGEND

- ⊗ 3/4" x 30" rebar set flush
- ⊙ Kelly W/M found (iron pipe with brass cap)
Ties measured electronically with Geodimeter
Section line bearing assumed.

Field book: FB18-13



David E. Tlusty
11/11/99

This rebar is in the center of an old road to the east.

Index No. P1 32-09



○ = corner perpetuated
The West 1/4 corner of Section 19, T. 32 N., R. 9 E., Langlade County, WI

SW corner, Sec. 19
Set Berntsen SN-1 nail

I, David E. Tlusty, Registered Land Surveyor, as Langlade County Surveyor, certify that the corner location on this record was determined by me and that this U.S. Public Land Survey Monument Record is correct to the best of my knowledge and belief.