

CERTIFIED LAND CORNER RESTORATION

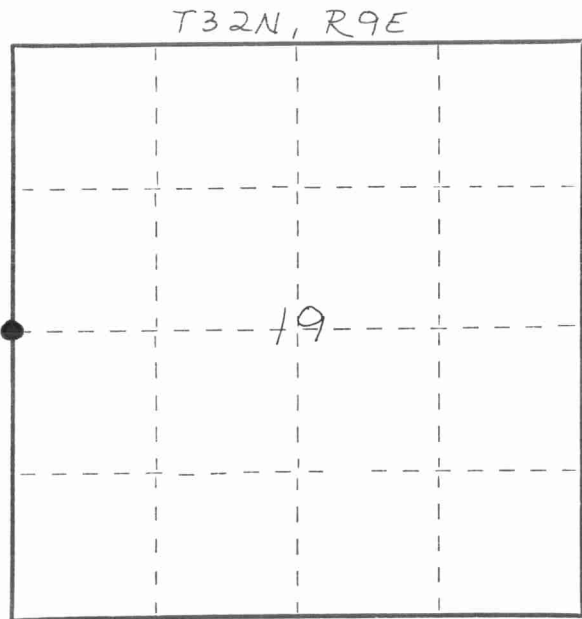
Index No. P-1

State of Wisconsin }
County of LANGLADE } ss.

I WILLIAM F. KELLY, do hereby certify that on the 26th day of MAY, 19 81, I found evidence of the WEST 1/4 corner of SECTION 19 Township 32, North, Range 9 EAST, Fourth Principal Meridian, as described hereon; and that from this evidence I established a new monument and accessories as described hereon to perpetuate the original location of this corner.

Resident witnesses:

.....
.....
.....



○ = Corner monument restored.

History of original corner establishment:

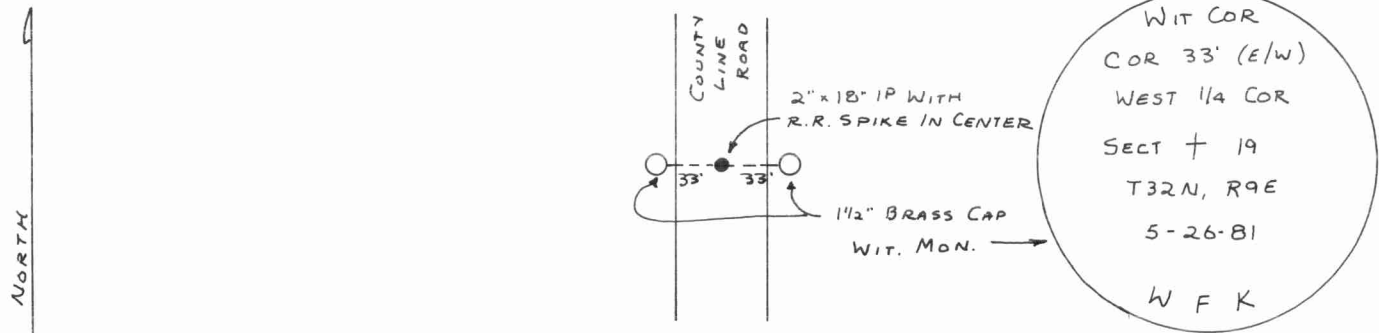
ORIGINAL CORNER ESTABLISHED
BY HIRAM C. FELLOWS IN SEPT., 1860.

6" x 6" GRANITE MONUMENT SET ON
RESURVEY OF LINCOLN COUNTY IN 1930'S
BY LINCOLN COUNTY HWY. DEPT.

Description of corner evidence found:

REPLACED GRANITE STONE
WITH 2" x 18" IP AND R.R. SPIKE,
SET 2 - 1 1/2" x 42" BLACK IRON
PIPES WITH BRASS CAP WITNESS
MONUMENTS.

Description of monument and accessories I established to perpetuate the original location of this corner.

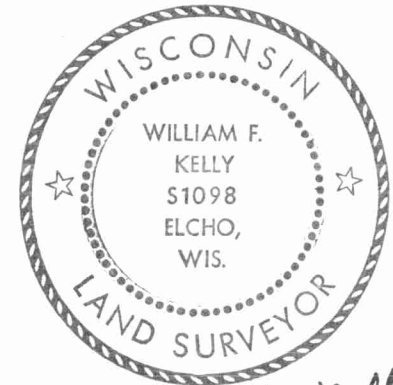


Dated at ELCHO, Wis., this 26th day of MAY, 19 81

Signature William F. Kelly Title COUNTY SURVEYOR Registration No. 1098
(County Surveyor, Registered Land Surveyor, or other duly authorized official)

Office of Register of Deeds, County of....., I hereby certify that the within instrument was filed in this office for record on the..... day of....., 19..... at..... o'clock..... M.

.....
(Register of Deeds)
By..... Deputy



William F. Kelly

FORM 983 H. C. MILLER CO., MILWAUKEE