

LANGLADE COUNTY U.S. PUBLIC LAND CORNER RESTORATION

The Southwest corner of Section 19, T 32 N., R 9 E, Langlade County, WI.

Corner was: (check all that apply)

3208240000

- Restored through acceptance of an obliterated evidence location.
- Restored through acceptance of a found perpetuated location.
- Determined to be lost and re-established through proportionate methods.
 - Show bearings and distances to PLSS corners used for proportioning, and show original distances).
- Restored/recovered/re-established in a location that differs from a previously established position.
- (Show difference in plan view below).
- Check here if additional information is shown on the reverse side of this form.

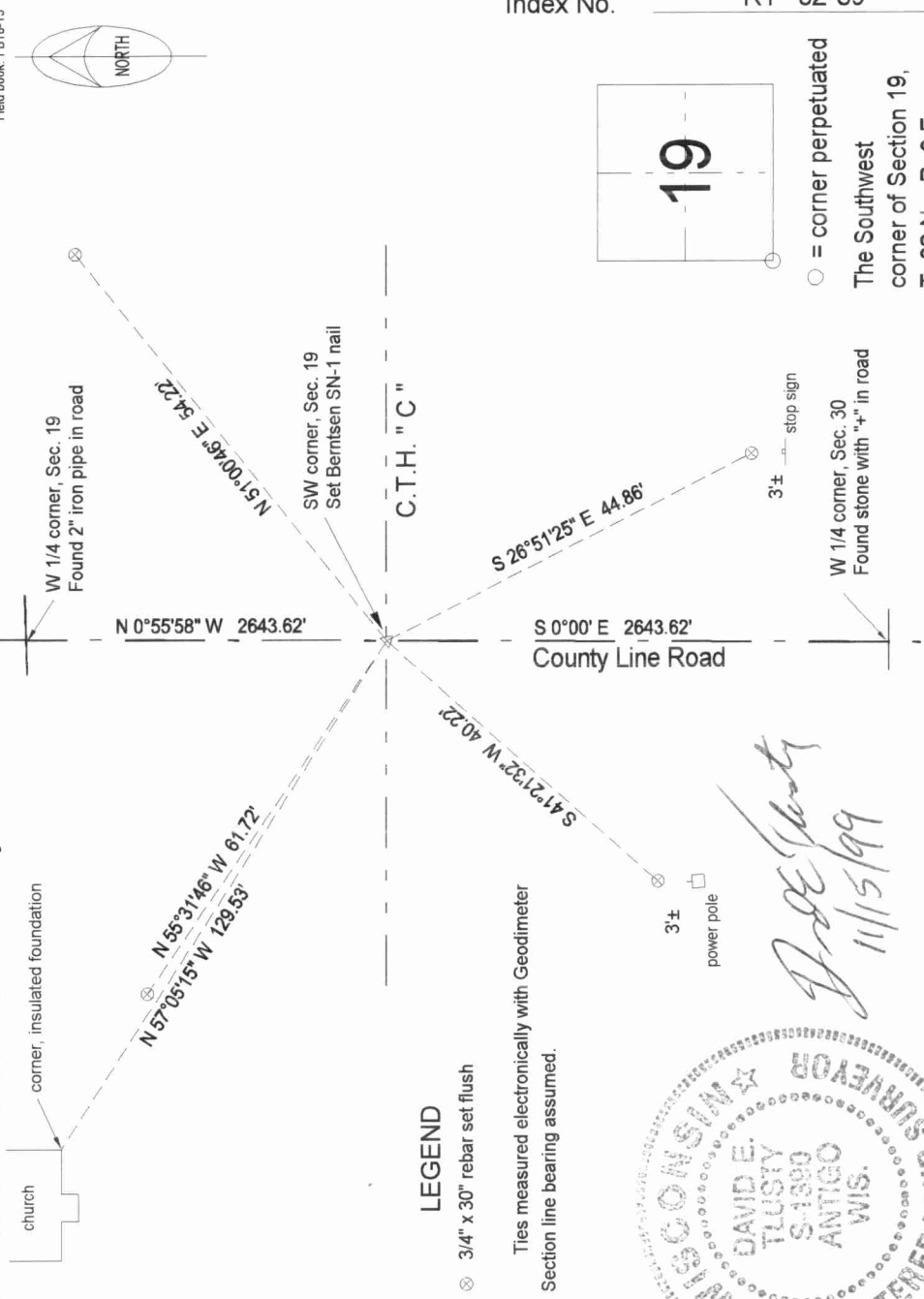
Describe record evidence, recovered physical evidence, occupational evidence, testimonial evidence and all other evidence considered in the recovery/restoration of the corner.

The original corner was established in 1851 by James M. Marsh. Original bearing trees: birch, 8", S29°E, 20 lks.; birch, 10", S70°W, 58 lks.; tamarac, 14", N35°W, 56 lks., and a tamarac, 12", N28°E, 19 lks. I find no subsequent records on this corner. In 1996±, we dug for the corner and found nothing. 11/08/99, D. Tlusty, D. Williams re-established this corner proportionately north-south between adjoining quarter corners, and on the centerline of the north-south town road (County Line Rd.) Set a nail for the corner and perpetuated the location as shown below.

Physical description of the monument set:

Set Berntsen SN-1 nail for the corner, which falls approx. 2' north of the centerline paint stripe of C.T.H. "C".

Describe the accessories used to perpetuate the corner. Include a plan view drawing and accessories found/set. Describe measuring point on bearing trees. Show any topographic features that would aid in future recovery of the corner.



LEGEND

⊗ 3/4" x 30" rebar set flush

Ties measured electronically with Geodimeter
Section line bearing assumed.

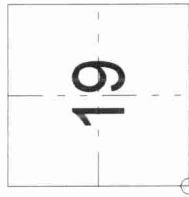


David E. Tlusty
11/15/99

I, David E. Tlusty, Registered Land Surveyor, as Langlade County Surveyor, certify that the corner location on this record was determined by me and that this U.S. Public Land Survey Monument Record is correct to the best of my knowledge and belief.

Index No. _____

R1 32-09



○ = corner perpetuated
The Southwest corner of Section 19, T. 32 N., R. 9 E., Langlade County, WI

Field book: FB1E-13