

CERTIFIED LAND CORNER RESTORATION

Index No. C-1

State of Wisconsin }  
County of LANGLADE } ss.

I, WILLIAM F. KELLY, do hereby certify that on the 19<sup>th</sup> day of Nov., 1981, I found evidence of the W 1/4 corner of SECTION 6 Township 32, North, Range 9 EAST, Fourth Principal Meridian, as described hereon; and that from this evidence I established a new monument and accessories as described hereon to perpetuate the original location of this corner.

Resident witnesses:

H. KAISER

History of original corner establishment:

ORIGINAL CORNER ESTABLISHED BY  
JAMES M. MARSH IN AUG., 1851

ORIGINAL POST REPLACED WITH GRANITE  
MONUMENTS ABOUT 1930 BY LINCOLN  
COUNTY SURVEYOR.

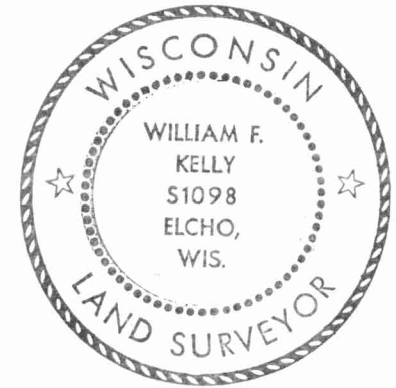
Description of corner evidence found:

GRANITE MONUMENT LOCATED TILTED  
OUT OF POSITION. SET NEW 2" x 42"

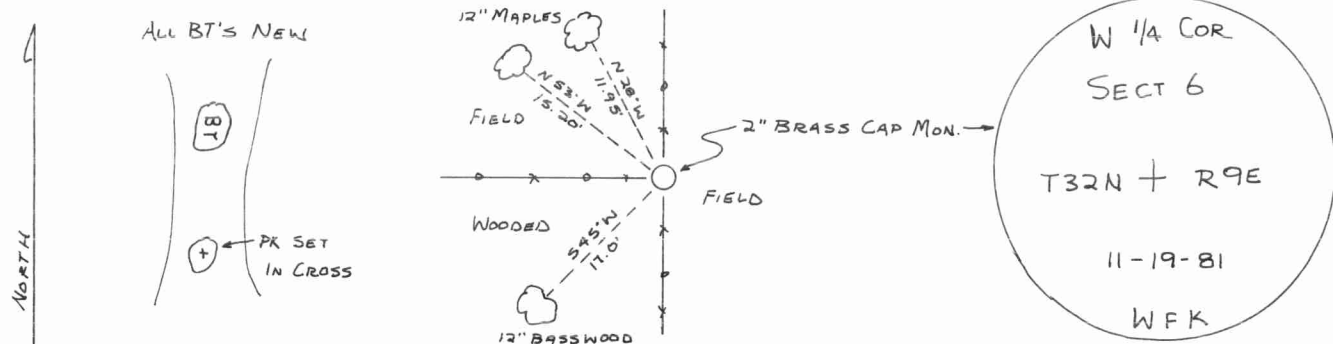
BLACK IRON PIPE WITH BRASS CAP MON.

AS CORNER. GRANITE MON. AND STONES

PLACED AROUND PIPE.



Description of monument and accessories I established to perpetuate the original location of this corner.



Dated at ELCHO, Wis., this 19<sup>th</sup> day of Nov., 1981

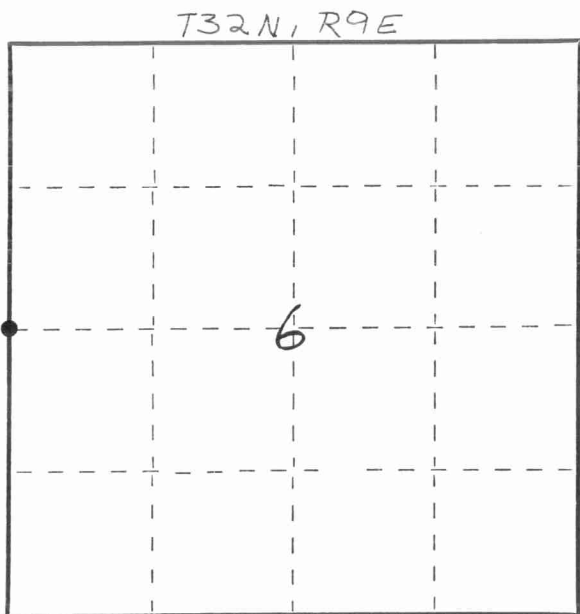
Signature William F. Kelly Title COUNTY SURVEYOR Registration No. 1098  
(County Surveyor, Registered Land Surveyor, or other duly authorized official)

Office of Register of Deeds, County of \_\_\_\_\_, I hereby certify that the within instrument was filed in this office for record on the \_\_\_\_\_ day of \_\_\_\_\_, 19\_\_\_\_ at \_\_\_\_\_ o'clock \_\_\_\_\_ M.

(Register of Deeds)

By \_\_\_\_\_ Deputy

FORM 985 H. C. MILLER CO., MILWAUKEE



○ = Corner monument restored.