

CERTIFIED LAND CORNER RESTORATION

Index No. V-5

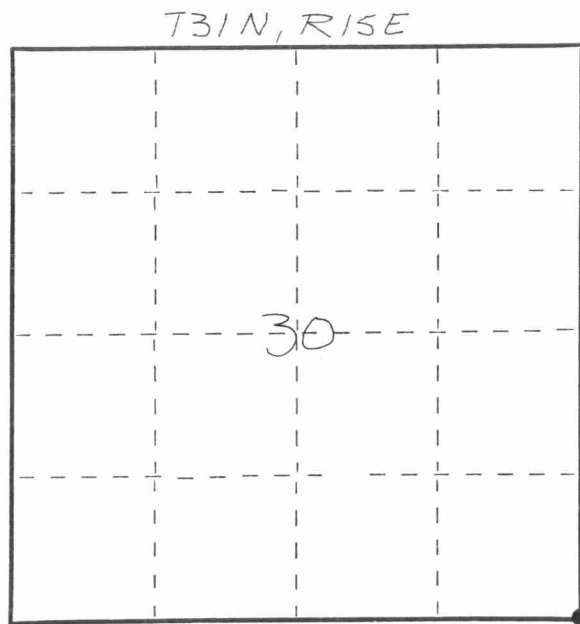
State of Wisconsin }
 County of LANGLADE } ss.

I WILLIAM F. KELLY, do hereby certify that on the 15th day of OCT., 19 81, I found evidence of the SE corner of SEC. 30 Township 31, North, Range 15 EAST, Fourth Principal Meridian, as described hereon; and that from this evidence I established a new monument and accessories as described hereon to perpetuate the original location of this corner.

Resident witnesses:

.....

FORM 985 H. C. MILLER CO., MILWAUKEE



○ = Corner monument restored.

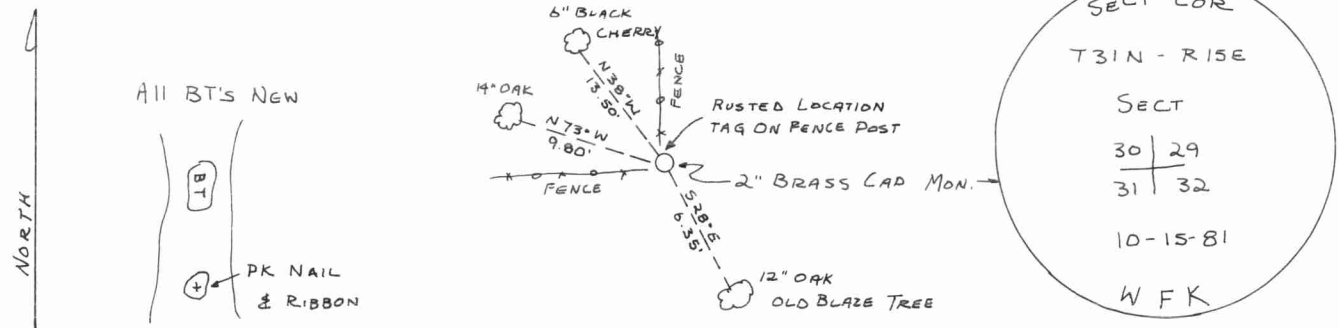
History of original corner establishment:

ORIGINAL Corner established by
 JAMES McBRIDE IN SEPT., 1857

Description of corner evidence found:

FOUND 1" IRON PIPE AND BLAZE TREE AND
 RUSTED LOCATION TAG ON
 FENCE CORNER. REPLACED
 IRON PIPE WITH A 2" x 42"
 BLACK IRON PIPE WITH BRASS
 CAP MONUMENT.

Description of monument and accessories I established to perpetuate the original location of this corner.



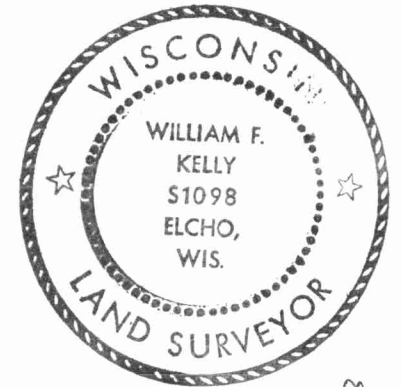
Dated at ELCHO, Wis., this 15th day of OCTOBER, 19 81.

Signature William F. Kelly Title COUNTY SURVEYOR Registration No. 1098
 (County Surveyor, Registered Land Surveyor, or other duly authorized official)

Office of Register of Deeds, County of....., I hereby certify that the within instrument was filed in this office for record on the..... day of....., 19..... at..... o'clock..... M.

(Register of Deeds)

By..... Deputy



William F. Kelly

