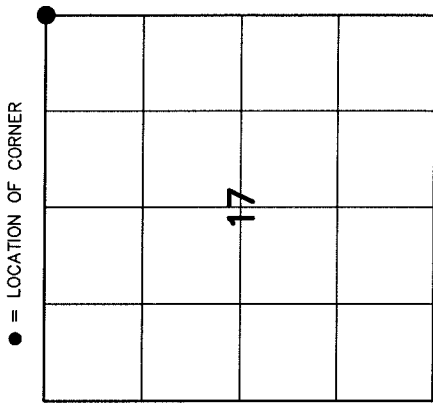


4311508 0000 2017

U.S. PUBLIC LAND SURVEY MONUMENT RECORD

HISTORY OF ORIGINAL CORNER ESTABLISHMENT AND SUBSEQUENT RESTORATION AND DESCRIPTION OF ANY RECORD, MONUMENT OCCUPATIONAL, TESTIMONIAL OR OTHER EVIDENCE CONSIDERED:

THE ORIGINAL CORNER WAS SET BY McBRIDE IN 1857. THE ORIGINAL BEARING TREES WERE:
 HEMLOCK 12" N50°E 29 LINKS
 HEMLOCK 16" S51°E 18 LINKS
 HEMLOCK 26" S57°W 4 LINKS
 HEMLOCK 22" N46°W 29 LINKS
 1933--KOLBE FOUND A SCRIBED HARDWOOD STAKE
 1978--STEFAN FOUND OLD CEDAR POST WITH WELL POINT IN CENTER OF POST
 1984--STEFAN REPLACED POST WITH 2" PIPE WITH ALUMINUM CAP
 2017--I FOUND THE PIPE WITH ALUMINUM CAP AND SET TIES AS SHOWN

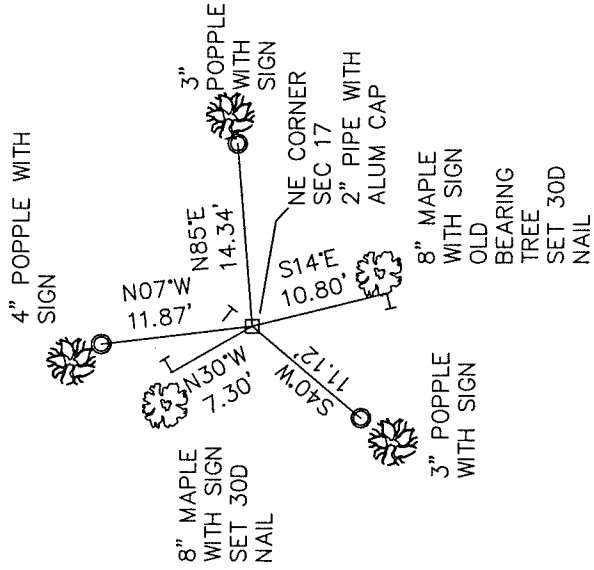


SECTION 17
 TOWNSHIP 31 NORTH, RANGE 15 EAST
 TOWN OF WOLF RIVER
 LANGLADE COUNTY, WISCONSIN

CORNER WAS: (CHECK ALL THAT APPLY)

- RESTORED THROUGH ACCEPTANCE OF AN OBLITERATED EVIDENCE LOCATION
- RESTORED THROUGH ACCEPTANCE OF A FOUND PERPETUATED LOCATION
- CONSIDERED A LOST CORNER AND REESTABLISHED THROUGH LOST CORNER PROPORTIONATE METHODS (INCLUDE A PLAN VIEW DRAWING SHOWING DISTANCES AND DIRECTIONS TO OTHER PUBLIC LAND SURVEY CORNERS USED FOR PROPORTIONING AND DETERMINING THE CORNER LOCATION)
- RESTORED OR REESTABLISHED IN A LOCATION THAT DIFFERS FROM A PREVIOUS RESTORATION OR REESTABLISHMENT (INCLUDE A PLAN VIEW DRAWING AND INDICATE WHAT WAS SET AND/OR FOUND)
- CHECK IF THERE IS ADDITIONAL INFORMATION ON BACK

DESCRIBE THE MONUMENT AND ACCESSORIES USED TO PERPETUATE THE LOCATION OF THE CORNER. (INCLUDE A PLAN VIEW DRAWING AND INDICATE WHAT WAS SET AND/OR FOUND) ALSO INCLUDE FOUR TIES TO THE SECTION CORNER AND DESCRIPTION OF THE TIES.



○ SET 3/4" x 30" RE-BAR AT TIE LOCATIONS

T- 6 FOOT WHITE VINYL POST SET

BEARING REFERENCED TO MAGNETIC

COORDINATE DATUM NAD 83(2011)

N 353431.88
 E 752678.29



CHARLEY G. BRINKMEIER

(type or print name) CERTIFY THAT THE CORNER LOCATION SHOWN ON THIS RECORD WAS DETERMINED BY ME OR UNDER MY DIRECTION AND CONTROL AND THAT THIS U.S. PUBLIC LAND SURVEY MONUMENT RECORD IS CORRECT AND COMPLETE TO THE BEST OF MY KNOWLEDGE AND BELIEF.

Charley G. Brinkmeier
 SIGNATURE

9-5-17
 DATE

