

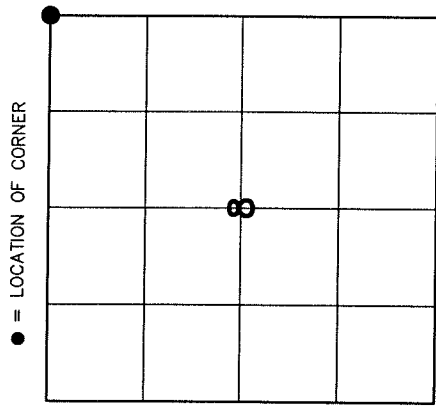
431505 0000 2017

U.S. PUBLIC LAND SURVEY MONUMENT RECORD

HISTORY OF ORIGINAL CORNER ESTABLISHMENT AND SUBSEQUENT RESTORATION AND DESCRIPTION OF ANY RECORD, MONUMENT OCCUPATIONAL, TESTIMONIAL OR OTHER EVIDENCE CONSIDERED:

THE ORIGINAL CORNER WAS SET BY McBRIDE IN 1857. THE ORIGINAL BEARING TREES WERE:
 CEDAR 8" N58°E 26 LINKS
 CEDAR 10" S40°E 7 LINKS
 CEDAR 11" S29°W 15 LINKS
 CEDAR 18" N35°W12 LINKS

2017-1 FOUND A 2" PIPE WITH ALUMINUM CAP MARKED AS CORNER. ACCEPTED THE POSITION AND SET TIES AS SHOWN

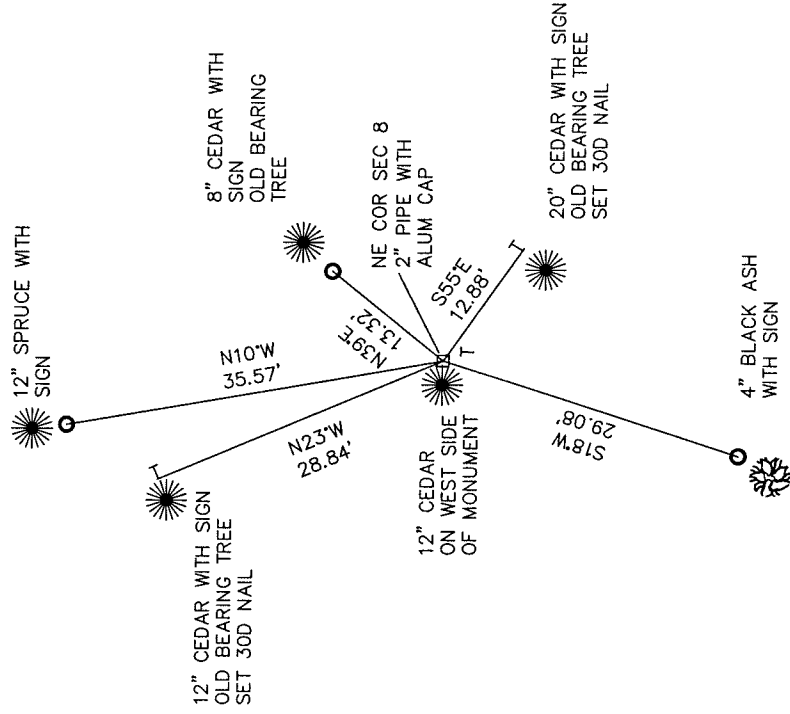


SECTION 8
 TOWNSHIP 31 NORTH, RANGE 15 EAST
 TOWN OF WOLF RIVER
 LANGLADE COUNTY, WISCONSIN

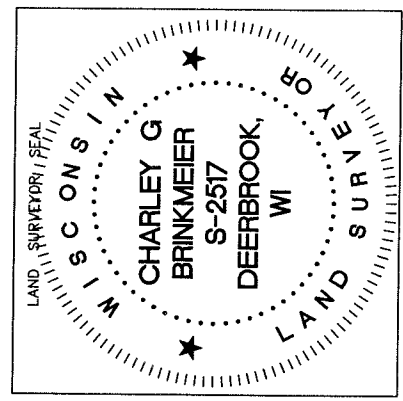
CORNER WAS: (CHECK ALL THAT APPLY)

- RESTORED THROUGH ACCEPTANCE OF AN OBLITERATED EVIDENCE LOCATION
- RESTORED THROUGH ACCEPTANCE OF A FOUND PERPETUATED LOCATION
- CONSIDERED A LOST CORNER AND REESTABLISHED THROUGH LOST CORNER PROPORTIONATE METHODS (INCLUDE A PLAN VIEW DRAWING SHOWING DISTANCES AND DIRECTIONS TO OTHER PUBLIC LAND SURVEY CORNERS USED FOR PROPORTIONING AND DETERMINING THE CORNER LOCATION)
- RESTORED OR REESTABLISHED IN A LOCATION THAT DIFFERS FROM A PREVIOUS RESTORATION OR REESTABLISHMENT (INCLUDE A PLAN VIEW DRAWING AND INDICATE WHAT WAS SET AND/OR FOUND)
- CHECK IF THERE IS ADDITIONAL INFORMATION ON BACK

DESCRIBE THE MONUMENT AND ACCESSORIES USED TO PERPETUATE THE LOCATION OF THE CORNER. (INCLUDE A PLAN VIEW DRAWING AND INDICATE WHAT WAS SET AND/OR FOUND) ALSO INCLUDE FOUR TIES TO THE SECTION CORNER AND DESCRIPTION OF THE TIES.



- SET 3/4" x 30" RE-BAR AT TIE LOCATIONS
- T- 6 FOOT WHITE VINYL POST SET
- BEARING REFERENCED TO MAGNETIC
- COORDINATE DATUM NAD 83(2011)
- N 358730.23
- E 752721.98



CHARLEY G. BRINKMEIER
(Type or print name) CERTIFY THAT THE CORNER LOCATION SHOWN ON THIS RECORD WAS DETERMINED BY ME OR UNDER MY DIRECTION AND CONTROL AND THAT THIS U.S. PUBLIC LAND SURVEY MONUMENT RECORD IS CORRECT AND COMPLETE TO THE BEST OF MY KNOWLEDGE AND BELIEF.

Charley G. Brinkmeier
 SIGNATURE

9-5-17
 DATE

INDEX NO. E-9 31-15