

4311435 0000 2017

U.S. PUBLIC LAND SURVEY MONUMENT RECORD

HISTORY OF ORIGINAL CORNER ESTABLISHMENT AND SUBSEQUENT RESTORATION AND DESCRIPTION OF ANY RECORD, MONUMENT OCCUPATIONAL, TESTIMONIAL OR OTHER EVIDENCE CONSIDERED:

THE ORIGINAL CORNER WAS SET BY JM MARSH IN 1851. THE ORIGINAL BEARING TREES WERE:

- OAK 10" N48°E 33 LINKS
- ELM 11" N22°E 23 LINKS
- ELM 10" N39°E 20 LINKS
- ELM 8" N69°W 27 LINKS

1933- GLO FOUND SOME ORIGINAL EVIDENCE AND SET THE BRASS CAP IN CONCRETE

1981 - KELLY FOUND THE BRASS CAP AND SET TIES

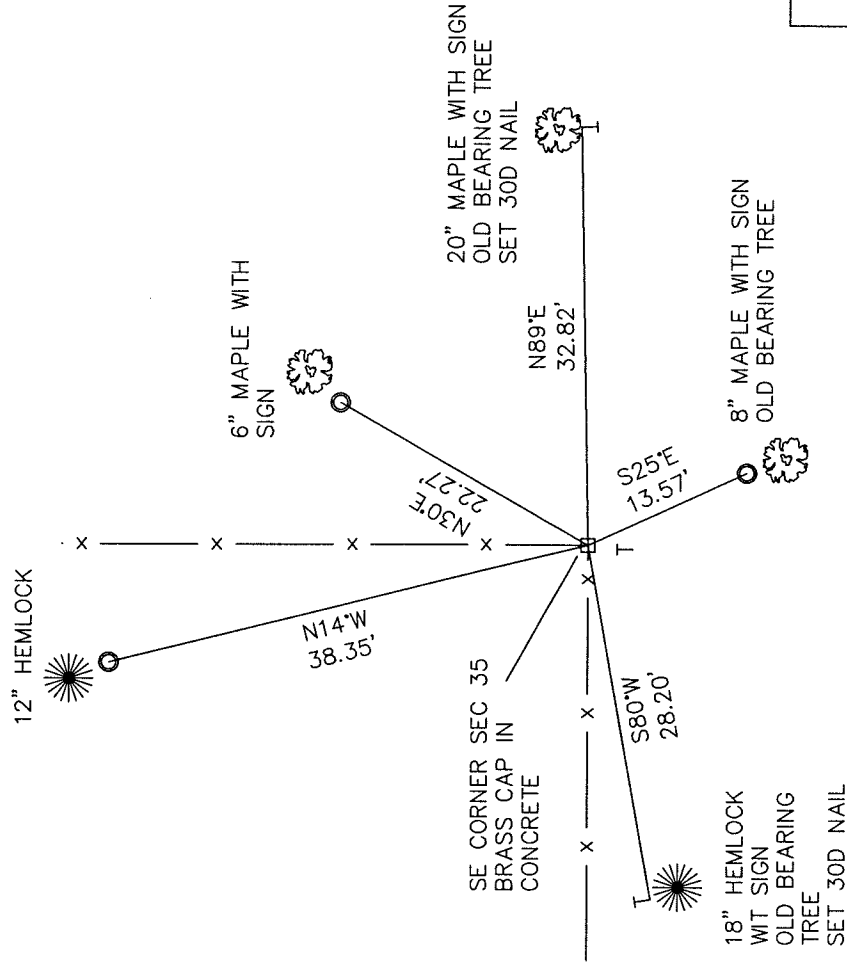
1999-DOBBRATZ FOUND THE BRASS CAP AND SET TIES

2017-I ALSO FOUND THE BRASS CAP AND SET TIES AS SHOWN. SET A MAGNET ON THE SOUTH EDGE OF THE CONCRETE 3" DEEP

CORNER WAS: (CHECK ALL THAT APPLY)

- RESTORED THROUGH ACCEPTANCE OF AN OBLITERATED EVIDENCE LOCATION
- RESTORED THROUGH ACCEPTANCE OF A FOUND PERPETUATED LOCATION
- CONSIDERED A LOST CORNER AND REESTABLISHED THROUGH LOST CORNER PROPORTIONATE METHODS (INCLUDE A PLAN VIEW DRAWING SHOWING DISTANCES AND DIRECTIONS TO OTHER PUBLIC LAND SURVEY CORNERS USED FOR PROPORTIONING AND DETERMINING THE CORNER LOCATION)
- RESTORED OR REESTABLISHED IN A LOCATION THAT DIFFERS FROM A PREVIOUS RESTORATION OR REESTABLISHMENT (INCLUDE A PLAN VIEW DRAWING AND INDICATE WHAT WAS SET AND/OR FOUND)
- CHECK IF THERE IS ADDITIONAL INFORMATION ON BACK

DESCRIBE THE MONUMENT AND ACCESSORIES USED TO PERPETUATE THE LOCATION OF THE CORNER. (INCLUDE A PLAN VIEW DRAWING AND INDICATE WHAT WAS SET AND/OR FOUND) ALSO INCLUDE FOUR TIES TO THE SECTION CORNER AND DESCRIPTION OF THE TIES.



○ SET 3/4" x 30" RE-BAR
AT TIE LOCATIONS

T- 6 FOOT WHITE VINYL
POST SET

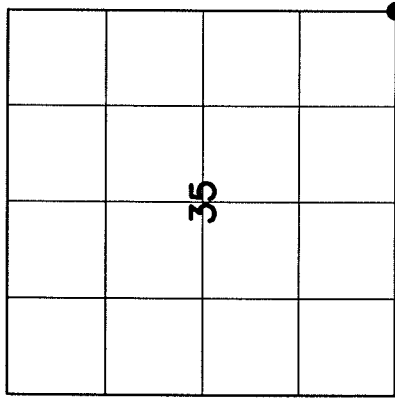
BEARING REFERENCED TO
MAGNETIC

COORDINATE DATUM NAD
83(2011)

N 332132.22
E 736103.57



● = LOCATION OF CORNER



SECTION 35

TOWNSHIP 31 NORTH, RANGE 14 EAST

TOWN OF WOLF RIVER

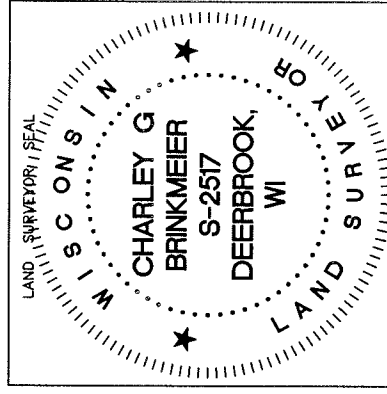
LANGLADE COUNTY, WISCONSIN

CHARLEY G. BRINKMEIER

(Type or print name) CERTIFY THAT THE CORNER LOCATION SHOWN ON THIS RECORD WAS DETERMINED BY ME OR UNDER MY DIRECTION AND CONTROL AND THAT THIS U.S. PUBLIC LAND SURVEY MONUMENT RECORD IS CORRECT AND COMPLETE TO THE BEST OF MY KNOWLEDGE AND BELIEF.

Charley G. Brinkmeier
SIGNATURE

9-27-17
DATE



Z21 31-14

INDEX NO.