

4311432 0020 2017

U.S. PUBLIC LAND SURVEY MONUMENT RECORD

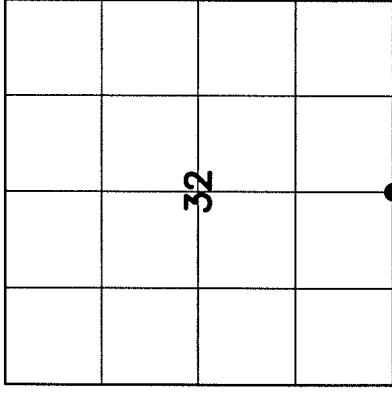
HISTORY OF ORIGINAL CORNER ESTABLISHMENT AND SUBSEQUENT RESTORATION AND DESCRIPTION OF ANY RECORD, MONUMENT OCCUPATIONAL, TESTIMONIAL OR OTHER EVIDENCE CONSIDERED:

THE ORIGINAL CORNER WAS SET BY JM MARSH IN 1851. THE ORIGINAL BEARING TREES WERE:

- MAPLE 24" N81°E 52 LINKS
- HEMLOCK 12" N39°E 46 LINKS
- HEMLOCK 10" N30°W 48 LINKS
- MAPLE 9" N73°W 49 LINKS

1933- GLO SET THE 1.5" PIPE WITH BRASS CAP
1983 - SEYMOUR FOUND THE BRASS CAP SET TIES
2017-1 ALSO FOUND THE BRASS CAP AND SET TIES AS SHOWN.

● = LOCATION OF CORNER

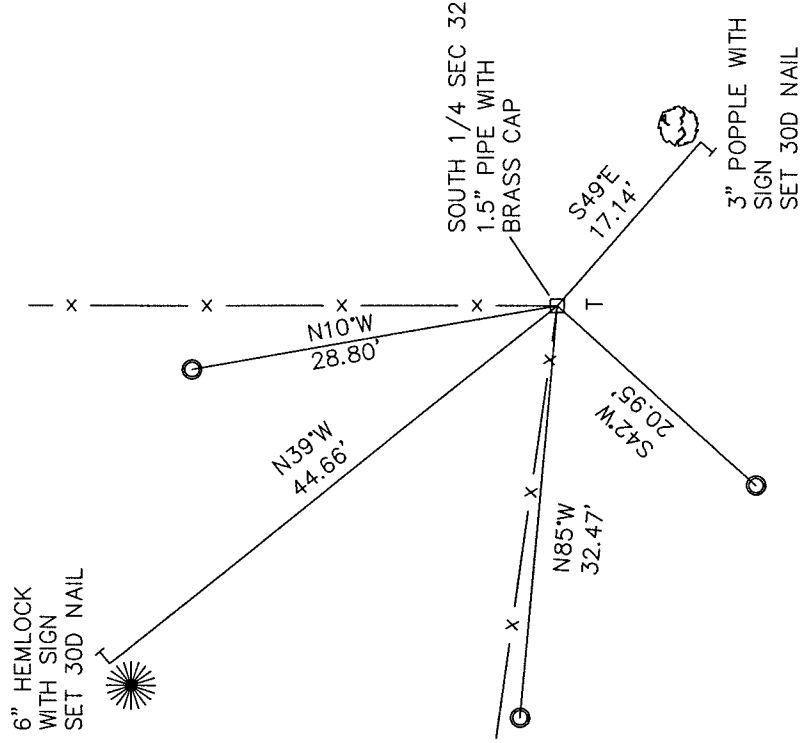


SECTION 32
 TOWNSHIP 31 NORTH, RANGE 14 EAST
 TOWN OF WOLF RIVER
 LANGLADE COUNTY, WISCONSIN

CORNER WAS: (CHECK ALL THAT APPLY)

- RESTORED THROUGH ACCEPTANCE OF AN OBLITERATED EVIDENCE LOCATION
- RESTORED THROUGH ACCEPTANCE OF A FOUND PERPETUATED LOCATION
- CONSIDERED A LOST CORNER AND REESTABLISHED THROUGH LOST CORNER PROPORTIONATE METHODS (INCLUDE A PLAN VIEW DRAWING SHOWING DISTANCES AND DIRECTIONS TO OTHER PUBLIC LAND SURVEY CORNERS USED FOR PROPORTIONING AND DETERMINING THE CORNER LOCATION)
- RESTORED OR REESTABLISHED IN A LOCATION THAT DIFFERS FROM A PREVIOUS RESTORATION OR REESTABLISHMENT (INCLUDE A PLAN VIEW DRAWING AND INDICATE WHAT WAS SET AND/OR FOUND)
- CHECK IF THERE IS ADDITIONAL INFORMATION ON BACK

DESCRIBE THE MONUMENT AND ACCESSORIES USED TO PERPETUATE THE LOCATION OF THE CORNER. (INCLUDE A PLAN VIEW DRAWING AND INDICATE WHAT WAS SET AND/OR FOUND) ALSO INCLUDE FOUR TIES TO THE SECTION CORNER AND DESCRIPTION OF THE TIES.



- SET 3/4" x 30" RE-BAR AT TIE LOCATIONS
- T- 6 FOOT WHITE VINYL POST SET
- BEARING REFERENCED TO MAGNETIC
- COORDINATE DATUM NAD 83(2011)
- N 332090.59
- E 717579.14

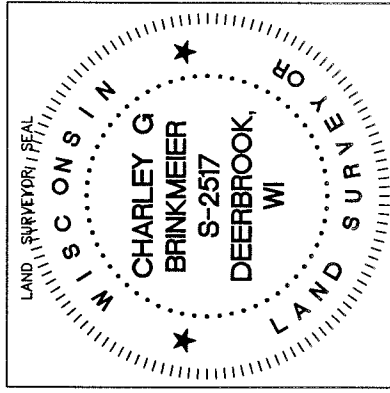


CHARLEY G. BRINKMEIER

(Type or print name) CERTIFY THAT THE CORNER LOCATION SHOWN ON THIS RECORD WAS DETERMINED BY ME OR UNDER MY DIRECTION AND CONTROL AND THAT THIS U.S. PUBLIC LAND SURVEY MONUMENT RECORD IS CORRECT AND COMPLETE TO THE BEST OF MY KNOWLEDGE AND BELIEF.

Charley G. Brinkmeier
 SIGNATURE

9-27-17
 DATE



27 31-14
 INDEX NO.