

CERTIFIED LAND CORNER RESTORATION

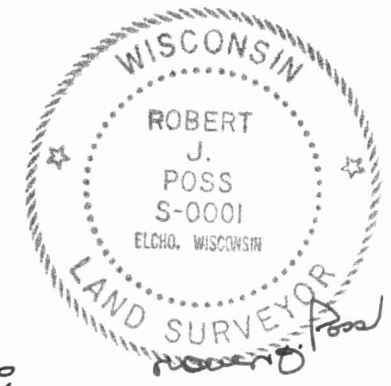
31-14

Index No. V-7

State of Wisconsin }
County of LANGLADE } ss.

I ROBERT J. POSS, do hereby certify that on the 18TH day of JULY, 19 70, I found evidence of the 1/4 corner of SECS. 29 & 32 Township 31, North, Range 14 EAST, Fourth, Principal Meridian, as described hereon; and that from this evidence I established a new monument and accessories as described hereon to perpetuate the original location of this corner.

History of original corner establishment:



Description of corner evidence found:

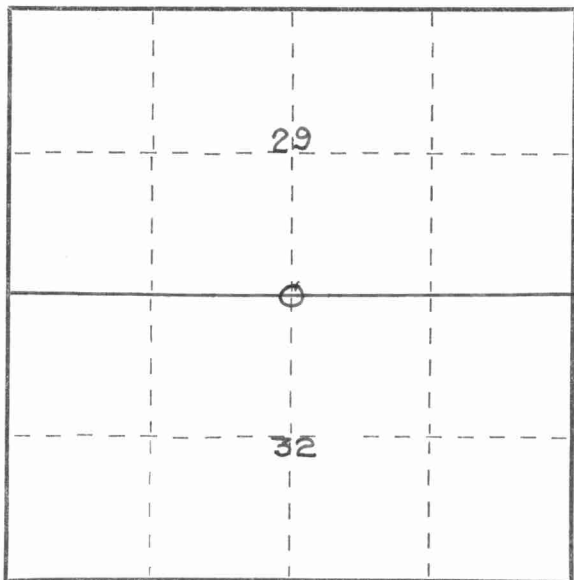
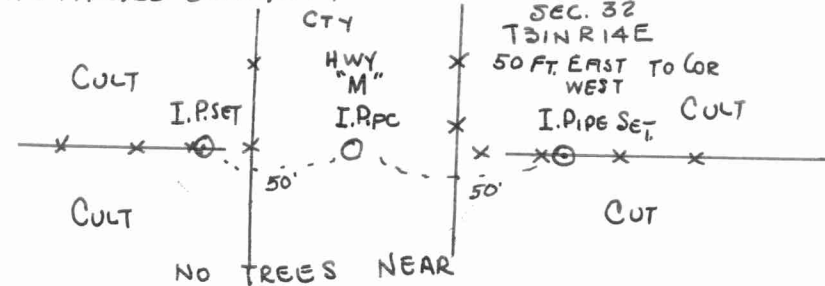
IRON PIPE IN CTR. OF ROAD UNDER BLACKTOP.

Resident witnesses:

.....
.....
.....

Description of monument and accessories I established to perpetuate the original location of this corner.

SET 2 WITNESS CORNERS MKD WIT COR 1/4 COR
1 1/4" PIPE PAINTED ORANGE W/BRASS CAP SEC. 29



○ = Corner monument restored.

Dated at Elcho, Wis., this 30TH day of JULY, 19 70.

Signature Robert J. Poss Title REG. LAND SURVEYOR Registration No. S-0001
(County Surveyor, Registered Land Surveyor, or other duly authorized official)

Office of Register of Deeds, County of....., I hereby certify that the within instrument was filed in this office for record on the..... day of....., 19..... at..... o'clock..... M.

.....
(Register of Deeds)

By..... Deputy

