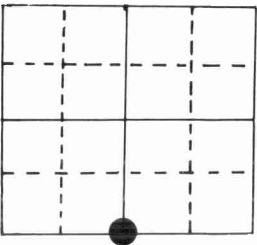


U.S. PUBLIC LAND SURVEY MONUMENT RECORD

Note: This form is intended and designed to fulfill all requirements of Wisconsin Administrative Code, Chapter A-E 5.02, U.S. Public Land Survey Monument Record (3) (a) (b) (c) (d) (e) (f) (g) (h) (i). An additional sheet may be added if necessary to conform with said requirements.

(a) Corner location: Township 31 North



Section 26

Range 14 East

Town/~~City~~ Wolf River

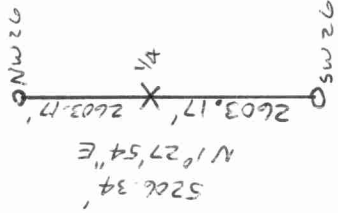
County Langlade

Aluminum Monument, Langlade Co.

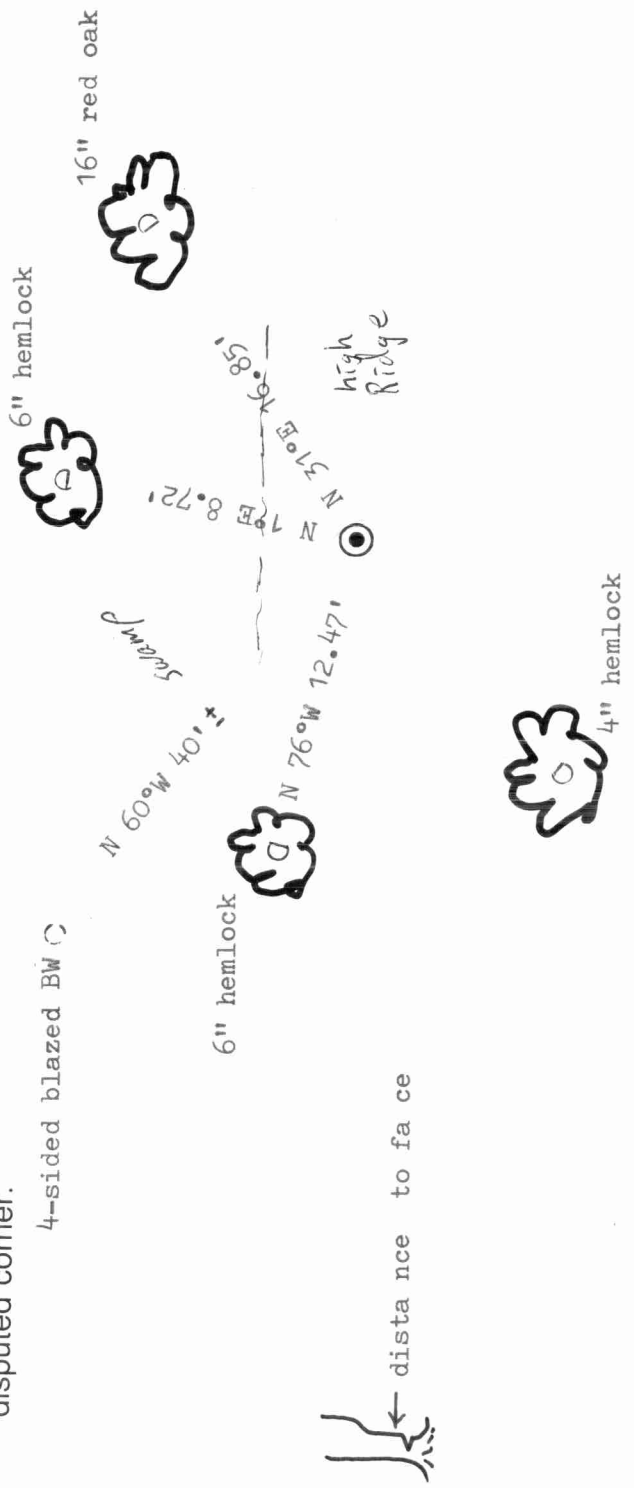
(b) (f) (g) (h) Description of monument found at this corner and if it was accepted, state all evidence (material, testimonial, occupational, plats, records, other monuments) used as a basis for accepting. If not accepted or if nothing was found, state evidence used as basis for establishing location. If reestablished through lost corner proportionate methods, indicate all monuments, distances and directions used to establish.

Original, 1857, James McBride, OBT's Birch 6" S 75°W 58 lks., Heml 12" S 89°E

Seymour, 1985, set corner by proportion. Location fits distance from river.



(c) (d) (e) Plan view of corner with ties to at least 4 witness monuments. If in disagreement with previously established corner, show the distances between the two corners and also indicate the ties to the disputed corner.



(i) I, Marvin E. Seymour
 (type or print name) certify that the corner location on this record was determined by me or under my direction and control and that this U.S. Public Land Survey Monument Record is correct and complete to the best of my knowledge and belief.

Marvin E. Seymour Jan 6, 1986
 Signature Date

