

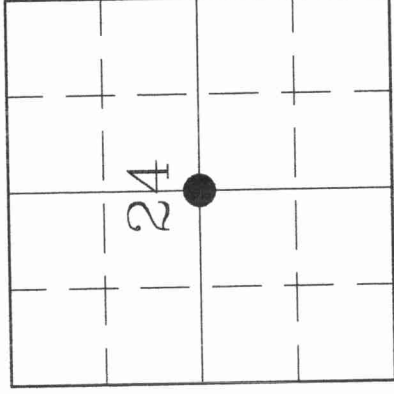
# U.S. PUBLIC LAND SURVEY MONUMENT RECORD

314242020

**HISTORY OF ORIGINAL CORNER ESTABLISHMENT AND SUBSEQUENT RESTORATION AND DESCRIPTION OF ANY RECORD, MONUMENT OCCUPATIONAL, TESTIMONIAL OR OTHER EVIDENCE CONSIDERED:**

THIS CORNER WAS NOT MONUMENTED IN THE ORIGINAL GOVERNMENT SURVEY. IN 1912, HUTCHINSON WAS AT THE CENTER OF SECTION 24 (HE DID NOT DESCRIBE WHAT HE SET). HE HAS DISTANCES OF 2634.06 FROM THE E 1/4, AND 2636.70 FROM THE S 1/4, AND 14" MAPLE BEARING TREES S9E 18LKS. AND N84W 31.5 LKS. ON 6/12/01, GERRY BAHAR AND MARK LEVITSKI SEARCHED IN THE AREA AND FOUND NOTHING. WE COMPUTED THE INTERSECTION OF THE NORTH-SOUTH AND EAST-WEST QUARTER LINES WHICH FELL 8' EAST OF HUTCHINSON'S E-W DISTANCE AND 3.5' SOUTH OF HIS N-S DISTANCE. WE SET A 1"X30" IRON PIPE AT OUR COMPUTED INTERSECTION, WHICH ALSO IS A CSM CORNER, AND TIED OUT.

● = LOCATION OF CORNER

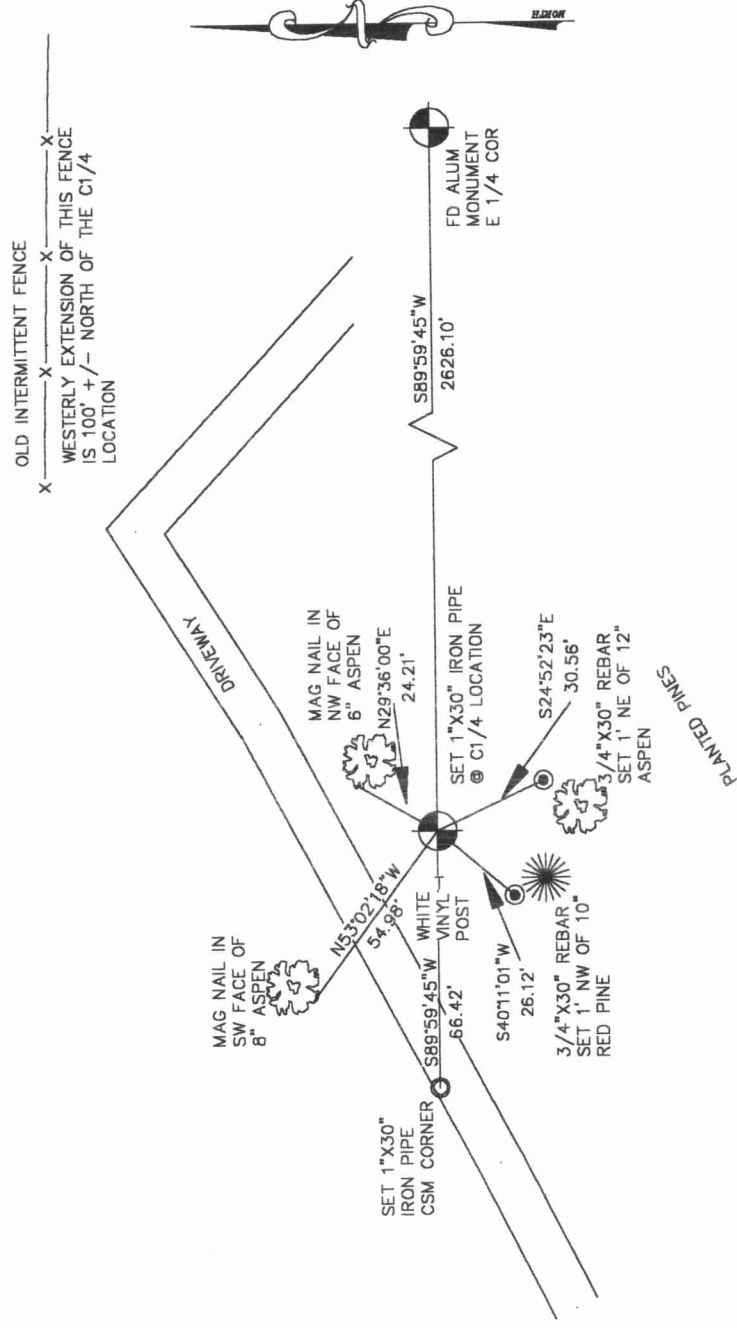


SECTION 24  
 TOWNSHIP 31 NORTH, RANGE 14 EAST  
 TOWN OF WOLF RIVER  
 LANGLADE COUNTY, WISCONSIN

**CORNER WAS: (CHECK ALL THAT APPLY)**

- RESTORED THROUGH ACCEPTANCE OF AN OBLITERATED EVIDENCE LOCATION
- RESTORED THROUGH ACCEPTANCE OF A FOUND PERPETUATED LOCATION
- CONSIDERED A LOST CORNER AND REESTABLISHED THROUGH LOST CORNER PROPORTIONATE METHODS (INCLUDE A PLAN VIEW DRAWING SHOWING DISTANCES AND DIRECTIONS TO OTHER PUBLIC LAND SURVEY CORNERS USED FOR PROPORTIONING AND DETERMINING THE CORNER LOCATION)
- RESTORED OR REESTABLISHED IN A LOCATION THAT DIFFERS FROM A PREVIOUS RESTORATION OR REESTABLISHMENT (INCLUDE A PLAN VIEW DRAWING AND INDICATE WHAT WAS SET AND/OR FOUND)
- CHECK IF THERE IS ADDITIONAL INFORMATION ON BACK

DESCRIBE THE MONUMENT AND ACCESSORIES USED TO PERPETUATE THE LOCATION OF THE CORNER. (INCLUDE A PLAN VIEW DRAWING AND INDICATE WHAT WAS SET AND/OR FOUND) ALSO INCLUDE FOUR TIES TO THE SECTION CORNER AND DESCRIPTION OF THE TIES.



DANIEL E. HIGGINBOTHAM

(Type or print name) CERTIFY THAT THE CORNER LOCATION SHOWN ON THIS RECORD WAS DETERMINED BY ME OR UNDER MY DIRECTION AND CONTROL AND THAT THIS U.S. PUBLIC LAND SURVEY MONUMENT RECORD IS CORRECT AND COMPLETE TO THE BEST OF MY KNOWLEDGE AND BELIEF.

*Daniel E. Higginbotham*  
 SIGNATURE

6/29/01  
 DATE



P23

INDEX NO.

