

CERTIFIED LAND CORNER RESTORATION

Index No. P-19

State of Wisconsin }
County of LANGLADE } ss.

History of original corner establishment:

I WILLIAM F. KELLY, do hereby certify that on the 18th day of NOVEMBER, 19 74, I found evidence of the CENTER SECTION corner of SECTION 23 Township 31, North, Range 14E, Fourth Principal Meridian, as described hereon; and that from this evidence I established a new monument and accessories as described hereon to perpetuate the original location of this corner.

Description of corner evidence found:

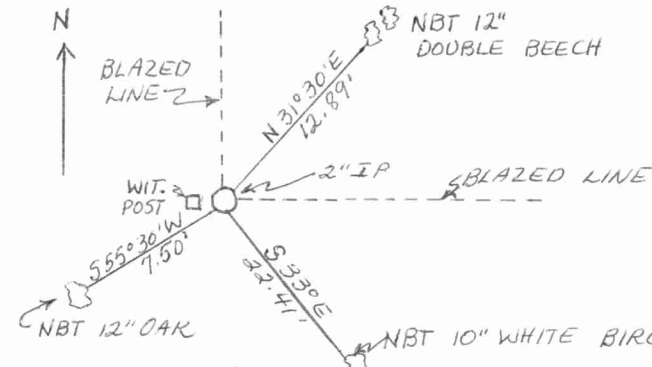
I LOCATED AN OLD BLACK CHERRY POST WITH A POINTED TOP. POST 1/2 ROTTED OFF AT GROUND. WIT. MARKER FOUND ON TREE.

Resident witnesses:

.....
.....
.....

Description of monument and accessories I established to perpetuate the original location of this corner.

I SET A 2" BLACK IRON PIPE WITH MARKED BRASS CAP AS CORNER AND RESET WOOD POST AS WIT. POST.



NEW BEARING TREES
BLAZED NBT CHEST
HIGH AND MARKED
WITH A + AT BASE

Dated at ELCHO, Wis., this 18th day of NOVEMBER, 19 74.

Signature William F. Kelly Title REGISTERED LAND SURVEYOR Registration No. S. 1098
(County Surveyor, Registered Land Surveyor, or other duly authorized official)

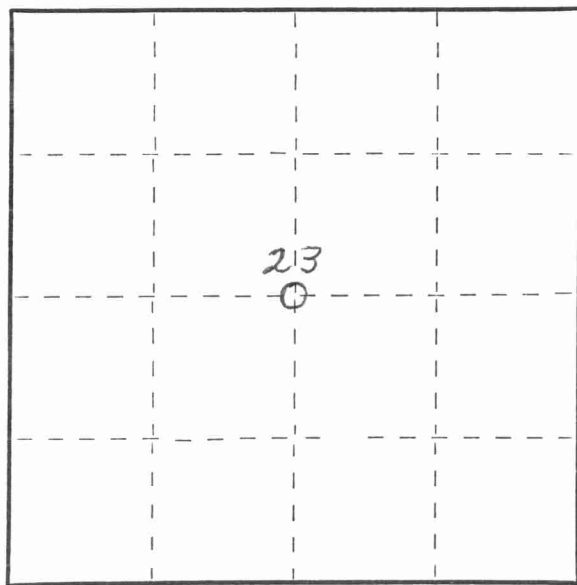
Office of Register of Deeds, County of _____, I hereby certify that the within instrument was filed in this office for record on the _____ day of _____, 19 _____ at _____ o'clock _____ M.

.....
(Register of Deeds)

By _____ Deputy

FORM 985 H. C. MILLER CO., MILWAUKEE

T. 31N. - R. 14E.



○ = Corner monument restored.

