

CERTIFIED LAND CORNER RESTORATION

Index No. P-20

State of Wisconsin }
 County of LANGLADE } ss.

History of original corner establishment:



William F. Kelly



I WILLIAM F. KELLY, do hereby certify that on the 18th day of NOVEMBER, 1974, I found evidence of the EAST 1/8 corner of EAST-WEST 1/4 Line SECTION 23 Township 31, North, Range 14E, Fourth Principal Meridian, as described hereon; and that from this evidence I established a new monument and accessories as described hereon to perpetuate the original location of this corner.

Description of corner evidence found:

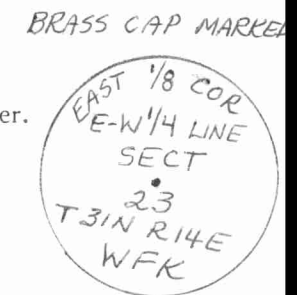
LOCATED AN OAK POST SQUARED ON 4 SIDES AND POINTED ON TOP AND TWO BEARING TREES BLAZED AND PAINTED BLUE.

Resident witnesses:

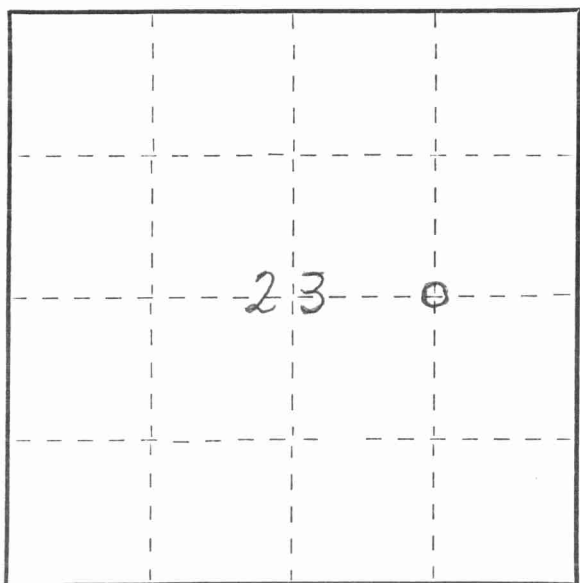
.....

Description of monument and accessories I established to perpetuate the original location of this corner.

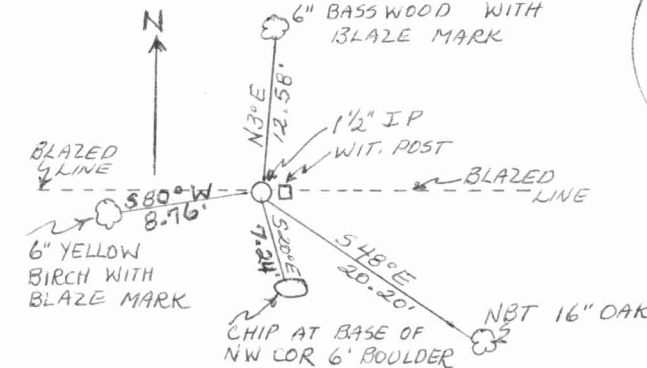
I SET A 1 1/2" IRON PIPE WITH BRASS CAP MARKED AND RESET THE OAK POST AS A WITNESS CORNER.



T.31N.-R.14E.



○ = Corner monument restored.



NEW BEARING TREE BLAZED NBT CHEST HIGH. ALL TREES MARKED WITH A + AT BASE.

Dated at ELCHO, Wis., this 18th day of NOVEMBER, 1974.

Signature William F. Kelly Title REGISTERED LAND SURVEYOR Registration No. S. 1098
 (County Surveyor, Registered Land Surveyor, or other duly authorized official)

Office of Register of Deeds, County of _____, I hereby certify that the within instrument was filed in this office for record on the _____ day of _____, 19____ at _____ o'clock _____ M.

(Register of Deeds)

By _____ Deputy

