

CERTIFIED LAND CORNER RESTORATION

Index No. P-5

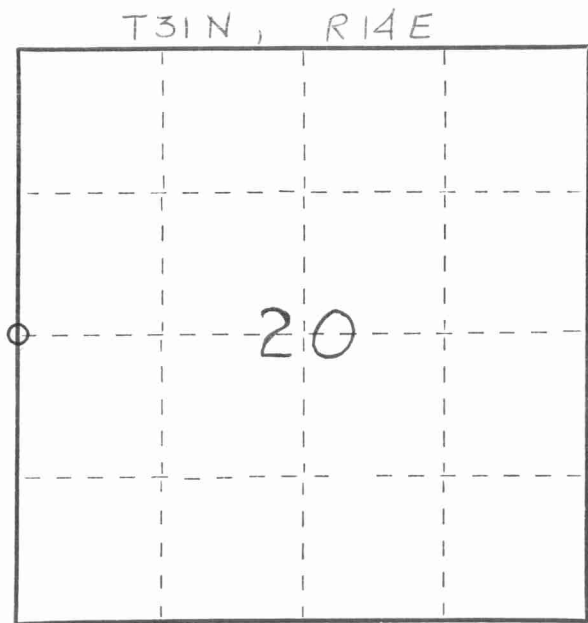
State of Wisconsin }  
 County of LANGLADE } ss.

I WESLEY J. TRADEWELL, do hereby certify that on the 26<sup>th</sup> day of SEPTEMBER, 19 78, I found evidence of the WEST 1/4 corner of SECTION 20 Township 31, North, Range 14 EAST, Fourth Principal Meridian, as described hereon; and that from this evidence I established a new monument and accessories as described hereon to perpetuate the original location of this corner.

Resident witnesses:

.....  
 .....

FORM 985 H. C. MILLER CO., MILWAUKEE



○ = Corner monument restored.

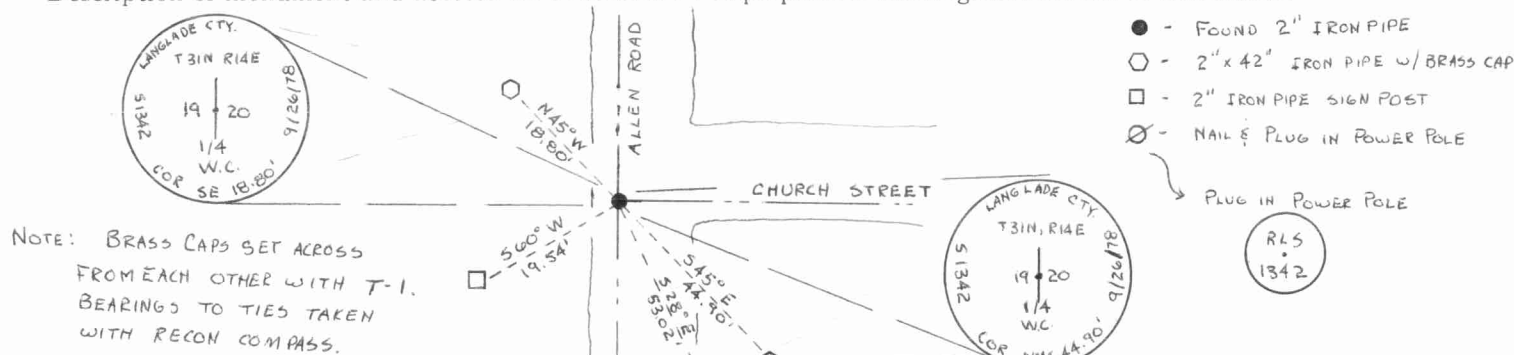
History of original corner establishment:

Description of corner evidence found:

FOUND 2" OUTSIDE DIAMETER IRON PIPE WITH TOP BENT OVER IN ROAD INTERSECTION. PIPE WAS OTHERWISE IN GOOD CONDITION AND STABLE, DID NOT REPLACE IT. TOP OF PIPE WAS 1" BELOW ASPHALT SURFACE.



Description of monument and accessories I established to perpetuate the original location of this corner.



Dated at ANTIGO, Wis., this 3<sup>rd</sup> day of OCTOBER, 19 78.

Signature Wesley J. Tradewell Title REGISTERED LAND SURVEYOR Registration No. 1342  
 (County Surveyor, Registered Land Surveyor, or other duly authorized official)

Office of Register of Deeds, County of....., I hereby certify that the within instrument was filed in this office for record on the.....day of....., 19..... at.....o'clock..... M.

.....  
 (Register of Deeds)

By.....Deputy

100

100

100