

CERTIFIED LAND CORNER RESTORATION

Index No. N-5

State of Wisconsin }
County of Wood } ss.

History of original corner establishment: See Subdivision Plat of Dark Lake

See Index Number _____ for South $\frac{1}{4}$ corner of said Section 18 for History of retracement.

I Keith R. Vreeland, do hereby certify that on the 20th day of September, 1973, I found evidence of the Southeast corner of 18 Township 31 N, North, Range 14 E, Fourth, Principal Meridian, as described hereon; and that from this evidence I established a new monument and accessories as described hereon to perpetuate the original location of this corner.

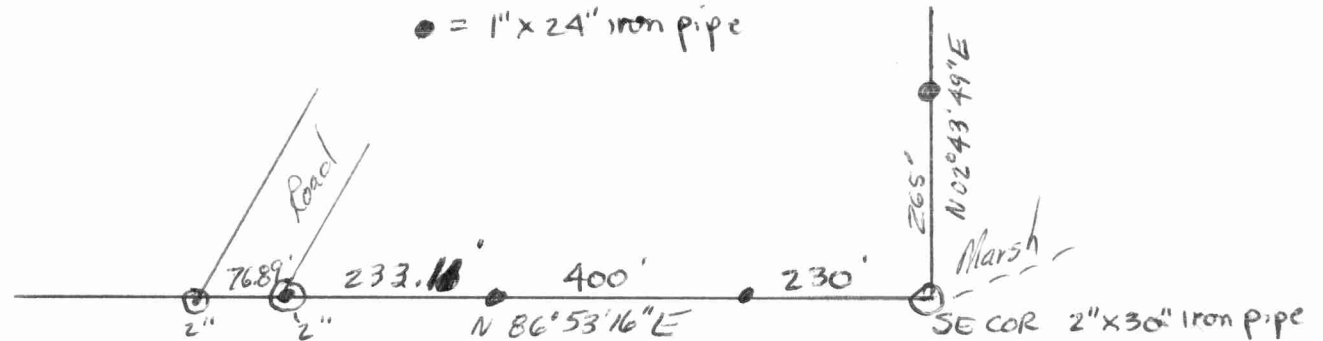
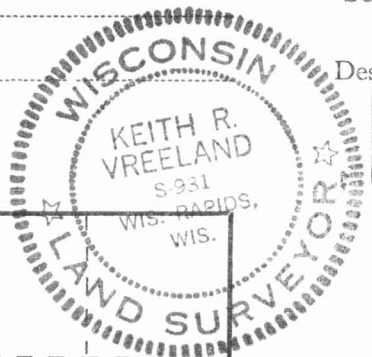
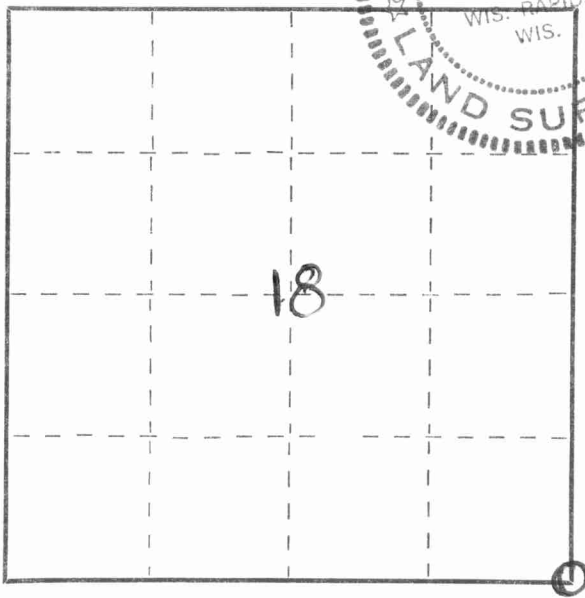
Description of corner evidence found:

Location falls in marsh area. No evidence of original monument found. Retraced possession lines along the east side of Section 19 in an attempt to location a direction north and south. Measured East from South quarter corner to intersect a location. Reviewed aerial topographic mapping on a scale of 1" = 100'. Searched for a witness or meander corner near the west shore of West White Lake along the south line of Section 17. Could not locate. Set corner location per all evidence available. Checks possession lines, measurements and topographic mapping. See the subdivision plat of Dark Lake.

Resident witnesses:

as shown on tie sketch

Description of monument and accessories I established to perpetuate the original location of this corner.



Dated at Wis. Rapids, Wis., this 20th day of May, 1975

Signature Keith R. Vreeland Title Registered Land Surveyor Registration No. S-0931
(County Surveyor, Registered Land Surveyor, or other duly authorized official)

Office of Register of Deeds, County of _____, I hereby certify that the within instrument was filed in this office for record on the _____ day of _____, 19____ at _____ o'clock _____ M.

(Register of Deeds)

By _____ Deputy

○ = Corner monument restored.

