

# U.S. PUBLIC LAND SURVEY MONUMENT RECORD

(Prepared and as required by S. A-E 7.08 WI Administrative Code)

The WEST QUARTER corner of Section 15, T. 31 N., R. 14 E., Langlade County, WI

Corner was: (check all that apply)

- Restored through acceptance of an obliterated evidence location.
- Restored through acceptance of a found perpetuated location.
- Determined to be lost and re-established through proportionate methods.
- (Show bearings and distances to PLSS corners used for proportioning.)
- Restored/recovered/reestablished in a location that differs from a previously established position. (Show difference in plan view below.)

- Check here if additional information is shown on the reverse side of this form.

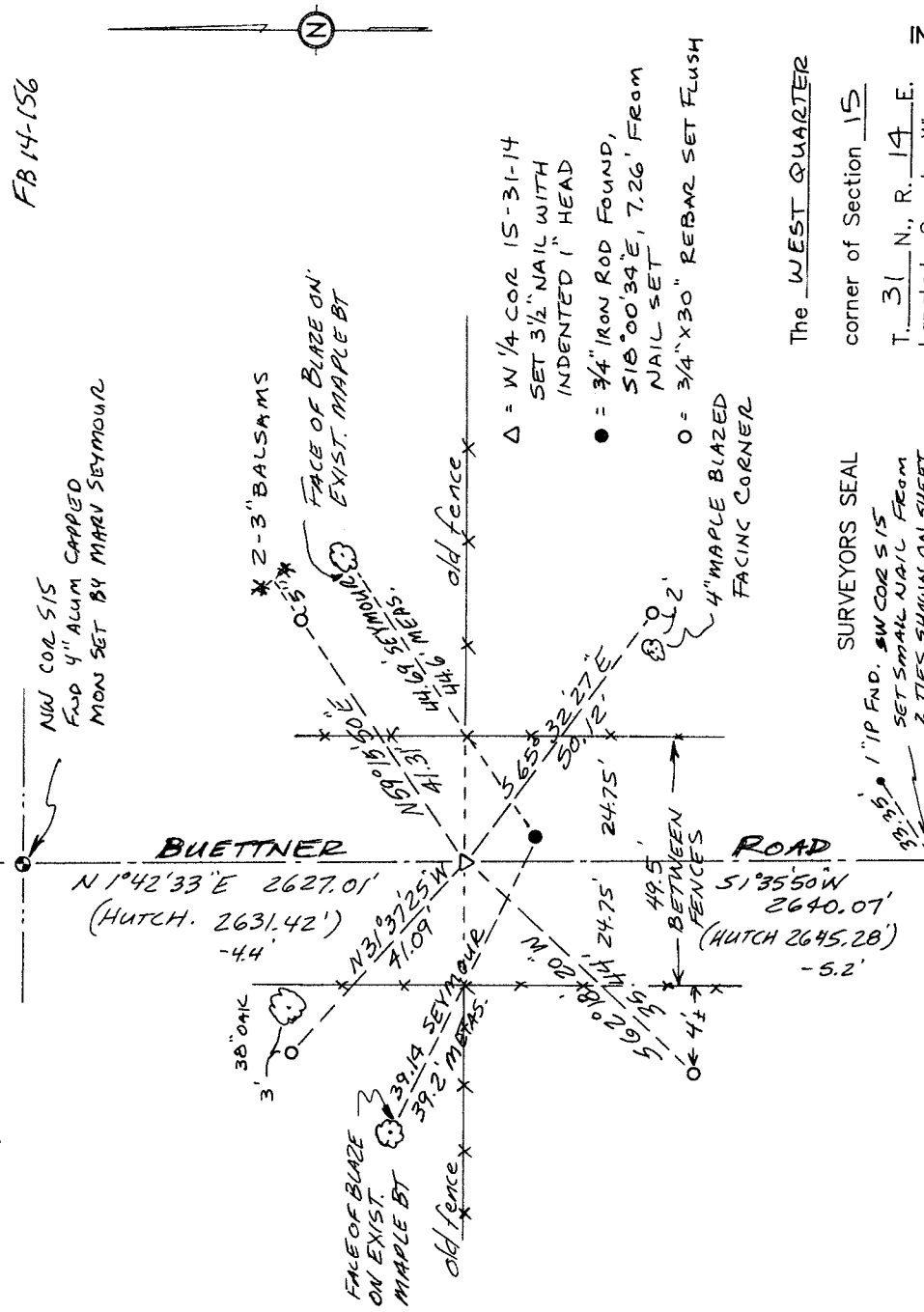
**Describe record evidence, recovered physical evidence, occupational evidence, testimonial evidence and all other evidence considered in the recovery/restoration of the corner.**

The original corner was established in 1857 by James McBride. Original bearing trees: birch, 10", S59°W, 37 lks., and an elm, 8", S33°E, 11 lks. In 1917, Hutchinson surveyed the West line of Section 15 and at this corner, found both original BT's, marked a new BT: birch, 24", N71 1/2°E, 34 1/4 lks., and set a 1/2" x 3 1/2" iron rod for the corner. In 1986, Marv Seymour apparently didn't have the Hutchinson information. He ignored physical evidence here (road CL, the road fences 49.5' apart, and the fences running ~~the~~ the E & W) and set the corner by "proportionment methods on line between section corners". He set a nail and washer for the corner and marked 4 BT's. In 1998, I do not agree with the position established by Seymour because the record dimensions of Hutchinson clearly support the location of the physical evidence (CL of road and the fences). The age and condition of the fences (mostly down) lead me to believe that they were built with full knowledge of the location of the 1/4 corner and the "new" BT marked by Hutch. in 1917. I therefore re-set the corner on the centerline of the north south road, which coincides with a split of fences on each side of the road, and in line with old fences running to the East & West. This position is in agreement N-S with Hutchinsons distances (see below).

Physical description of the monument set:

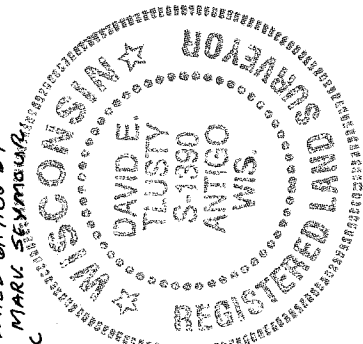
I set a 3 1/2" nail with a 1" indented head for the corner.

Describe the accessories used to perpetuate the location of the corner. Include a plan view drawing and indicate accessories found/set. Describe measuring point on bearing trees. Show any topographic features that would aid in future recovery of the corner.

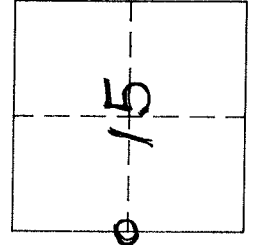


I, DAVID E. TLUSTY, LANGLADE COUNTY SURVEYOR, certify that the corner location shown on this record was determined by me or under my direction and control and that this U.S. Public Land Survey Monument Record is correct and complete to the best of my knowledge and belief.

*David E. Tlusty*  
 Signature Date 11/3/99



The WEST QUARTER corner of Section 15, T. 31 N., R. 14 E., Langlade County, WI



○ = Location of corner

INDEX No. 113