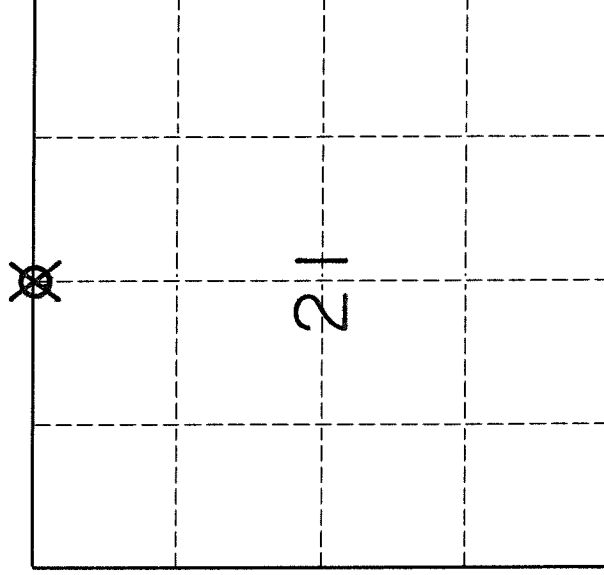


U. S. PUBLIC LAND SURVEY MONUMENT RECORD

I N S T R U C T I O N S:

This record shall show the location of the corner and shall include all of the following nine elements (a through i).

- (a) Identify the corner by reference to the U.S. public land survey system.
- O = Corner monument restored.



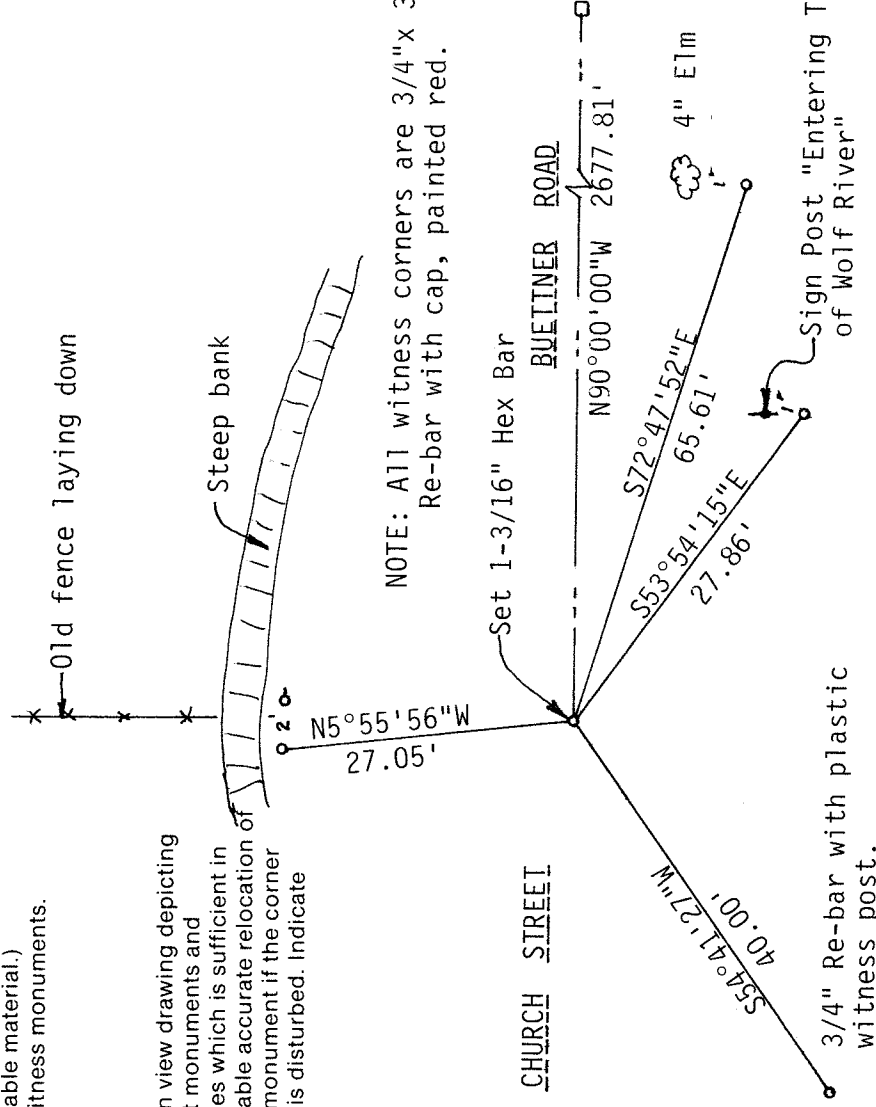
SECTION 21 T31N, R14E

- (b) Describe any record evidence, monument evidence, occupational evidence, testimonial evidence or any other material evidence you considered, and whether the monument was found or placed.

In 1917, Malcom Hutchinson found "1/4 Post", and set 2 new B.T.'s. Found no evidence of B.T.'s. Town Road has taken large cut out of original hill. Assumed that any original corner evidence was knocked out at time of road construction.

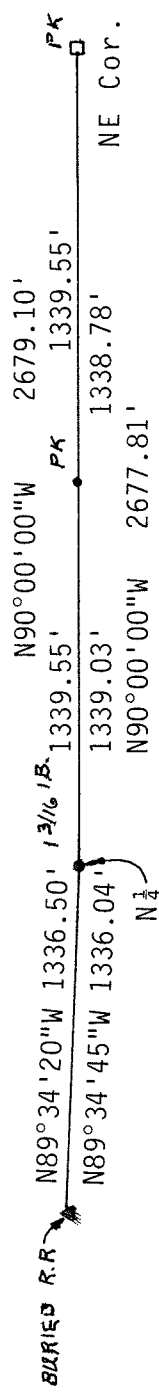
Existing evidence today are an old fence line, going North, and an existing PK Nail. Tied out nail, dug thru black top, found Rail Road Spike. Removed Rail Road Spike, dug by hand thru remaining black top, found no other evidence. This RR Spike was used as a corner tie on CSM 1-293, 2-96, & 3-112. Measured to other corners mentioned in above CSM's, distances were not perfect, but held Rail Road Spike as best location for corner. Set 1-3/16 Hex Iron Bar for corner. Tied out.

- (c) In the plan view drawing below, provide reference ties to at least 4 witness monuments, or, if the location is within a municipality, to at least 2 witness monuments. (Witness monuments shall be made of concrete, natural stone, iron or other equally durable material.) Describe witness monuments.



Describe any material discrepancy between the location of the corner as restored or reestablished and the location of that corner as previously restored or reestablished by distance and direction. Show the discrepancy on the plan view drawing under (d), above. Show the distances between the corner as previously restored or reestablished and (1) the corner as restored or reestablished, and (2) to at least 2 of the witness monuments shown on the drawing in (d), above.

RECORDED DISTANCES BY C.S.M.'S



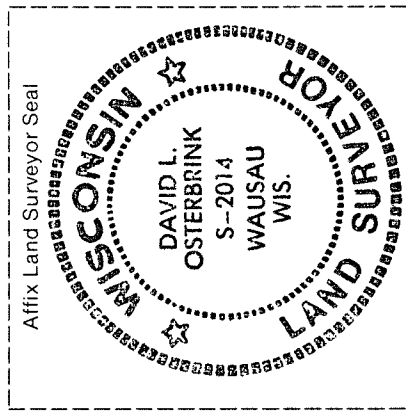
MEASURED DISTANCES

(f) Was the corner restored through acceptance of (1) an obliterated evidence location, or, (2) a found perpetuated location.?

Held existing Rail Road Spike, on center line of road, and on old fence line

(g & h) Was the corner reestablished through lost corner proportionate methods? If so, show the method, including the directions and distances to other public land survey corners used as evidence or used for proportioning in determining the corner location.

NO



(i) I, David L. Osterbrink
(type or print name)

certify that the corner location shown on this record was determined by me or under my direction and control and that this U.S. Public Land Survey Monument Record is correct and complete to the best of my knowledge and belief.

David L. Osterbrink 11-14-92
 Signature Date
 David L. Osterbrink RLS No. S-2014