

CERTIFIED LAND CORNER RESTORATION

Index No. 4-17

State of Wisconsin }
County of LANGLADE } ss.

History of original corner establishment:
ORIGINAL POST SET BY JAMES McBRIDE IN SEPTEMBER, 1857.

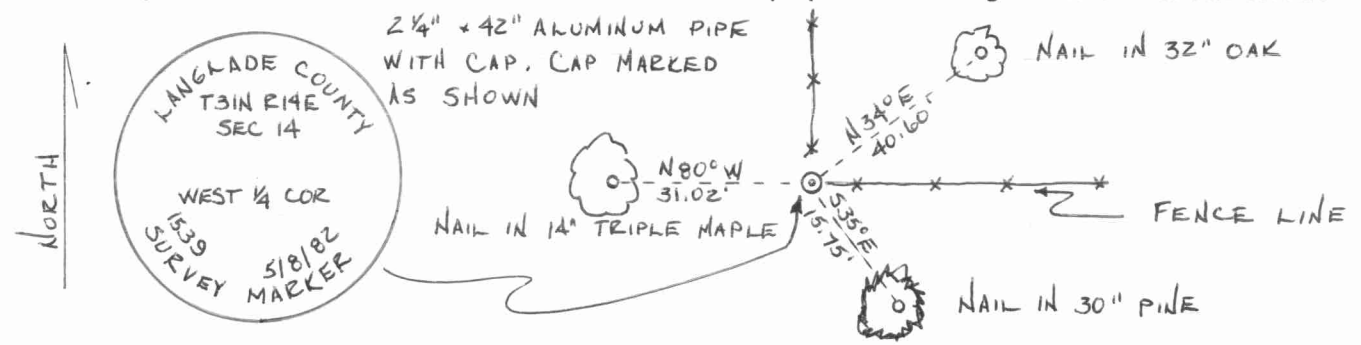
I MARK A. STIBBE, do hereby certify that on the 8TH day of MAY, 1982, I found evidence of the WEST 1/4 corner of SECTION 14 Township 31 North, Range 14 EAST, Fourth Principal Meridian, as described hereon; and that from this evidence I established a new monument and accessories as described hereon to perpetuate the original location of this corner.

Description of corner evidence found:
FOUND 1/4" OUTSIDE DIAMETER IRON PIPE, IDENTIFIED AS CORNER BY RESIDENT WITNESSES. SET 2 1/4" x 42" ALUMINUM PIPE WITH CAP OVER FOUND IRON PIPE.

Resident witnesses:
MICHAEL KLIMOSKI

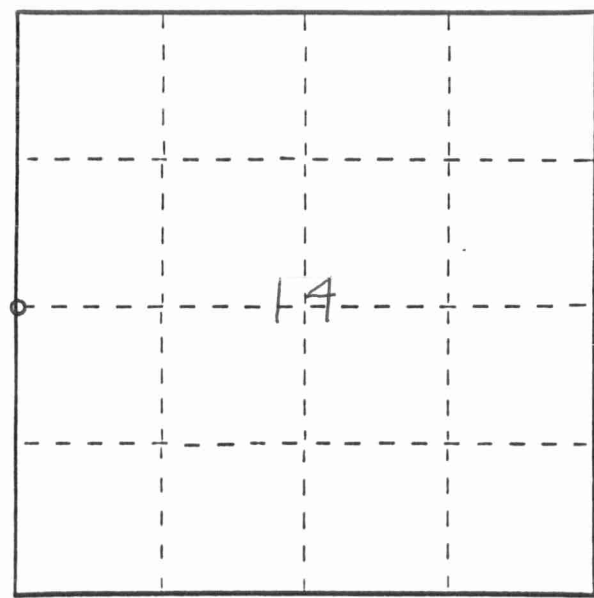
GEORGE JAGLA

Description of monument and accessories I established to perpetuate the original location of this corner.



FORM 985 M. C. MILLER CO., MILWAUKEE

T31N R14E



○ = Corner monument restored.

Dated at ANTIGO, Wis., this 5TH day of JUNE, 1982

Signature Mark A. Stibbe Title REG. LAND SURVEYOR Registration No. 1539
(County Surveyor, Registered Land Surveyor, or other duly authorized official)

Office of Register of Deeds, County of _____, I hereby certify that the within instrument was filed in this office for record on the _____ day of _____ at _____ o'clock _____ M.

(Register of Deeds)

By _____ Deputy



