

CERTIFIED LAND CORNER RESTORATION

Index No. L-19

State of Wisconsin }
 County of LANGLADE } ss.

I MARK A. STIBBE, do hereby certify that on the 24TH day of APRIL, 1982, I found evidence of the CENTER 1/4 corner of SECTION 14 Township 31, North, Range 14 EAST, Fourth Principal Meridian, as described hereon; and that from this evidence I established a new monument and accessories as described hereon to perpetuate the original location of this corner.

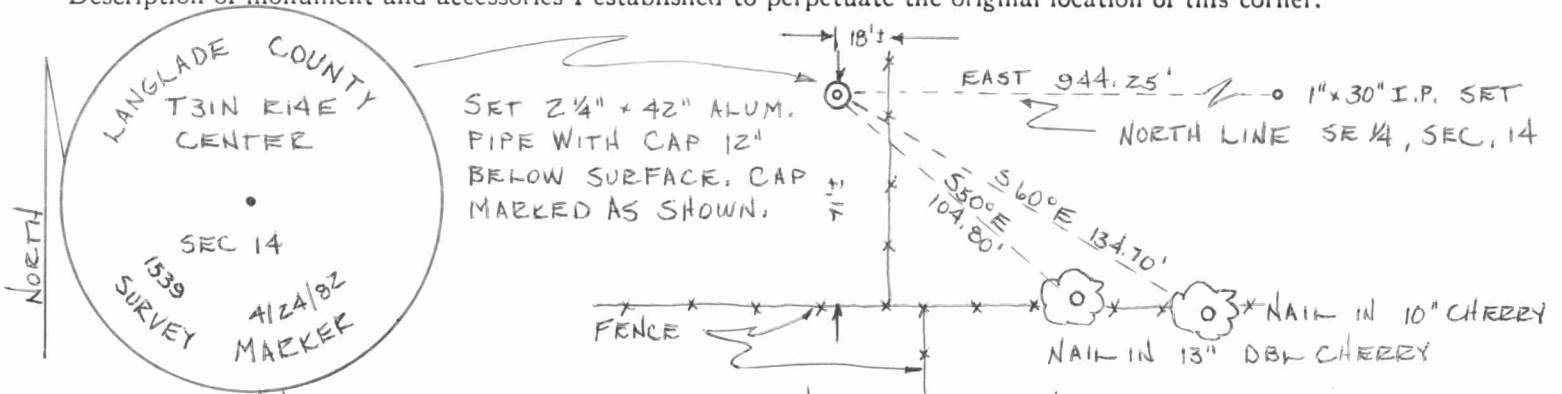
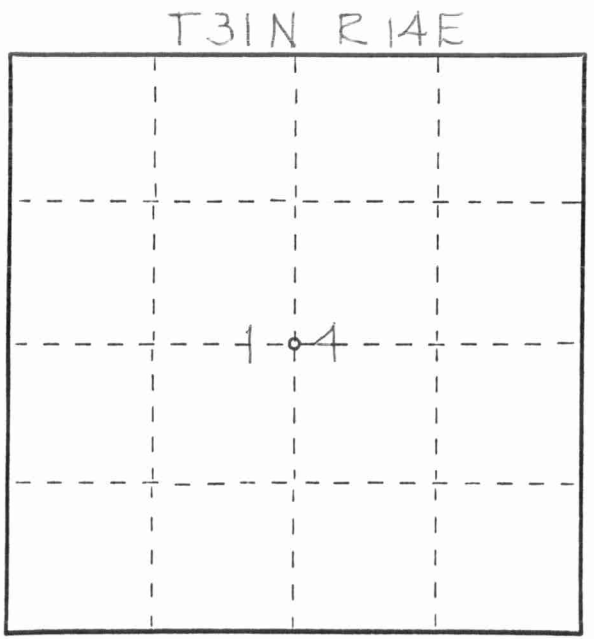
Resident witnesses:



Description of corner evidence found:
 FOUND NO EVIDENCE OF CORNER BEING PREVIOUSLY ESTABLISHED. SET CORNER AT THE INTERSECTION OF THE NORTH - SOUTH QUARTER LINE WITH THE EAST - WEST QUARTER LINE.

Description of monument and accessories I established to perpetuate the original location of this corner.

FORM 985 K. C. MILLER CO., MILWAUKEE



Dated at ANTIGO, Wis., this 25TH day of MAY, 1982.

Signature Mark A. Stibbe Title REG. LAND SURVEYOR Registration No. 1539
 (County Surveyor, Registered Land Surveyor, or other duly authorized official)

Office of Register of Deeds, County of _____, I hereby certify that the within instrument was filed in this office for record on the _____ day of _____, 19____ at _____ o'clock _____ M.

(Register of Deeds)

By _____ Deputy

○ = Corner monument restored.

