

CERTIFIED LAND CORNER RESTORATION

Index No. L-21

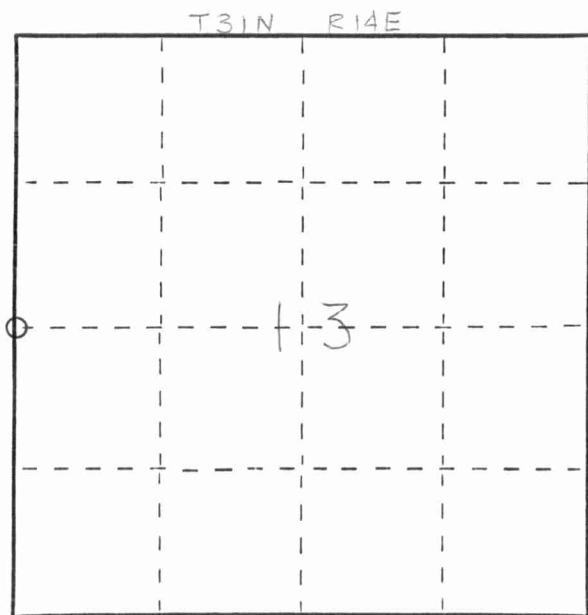
State of Wisconsin }  
County of LANGLADE } ss.

I WESLEY J. TRADEWELL, do hereby certify that on the 23<sup>RD</sup> day of MAY, 19 79, I found evidence of the WEST 1/4 corner of SECTION 13 Township 3, North, Range 14 EAST, Fourth Principal Meridian, as described hereon; and that from this evidence I established a new monument and accessories as described hereon to perpetuate the original location of this corner.

Resident witnesses:

ROBERT DOEMEL

FORM 985 M. C. MILLER CO., MILWAUKEE



○ = Corner monument restored.

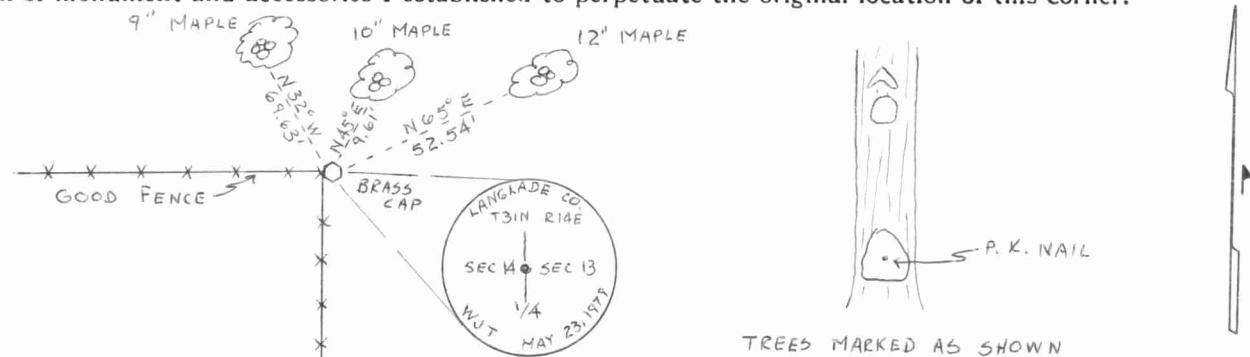
History of original corner establishment:



Description of corner evidence found:

FOUND OLD FENCE INTERSECTION IDENTIFIED AS CORNER BY ROBERT DOEMEL. CHECKS WITH CORNERS TO NORTH AND SOUTH. SET 2 1/2" x 42" BLACK IRON PIPE WITH BRASS CAP AT CORNER.

Description of monument and accessories I established to perpetuate the original location of this corner.



Dated at ANTIGO, Wis., this 24<sup>TH</sup> day of MAY, 19 79.

Signature Wesley J. Tradewell Title REGISTERED LAND SURVEYOR Registration No. 1342  
(County Surveyor, Registered Land Surveyor, or other duly authorized official)

Office of Register of Deeds, County of \_\_\_\_\_, I hereby certify that the within instrument was filed in this office for record on the \_\_\_\_\_ day of \_\_\_\_\_, 19 \_\_\_\_\_ at \_\_\_\_\_ o'clock \_\_\_\_\_ M.

(Register of Deeds)

By \_\_\_\_\_ Deputy

MISSOURI  
1892