

CERTIFIED LAND CORNER RESTORATION

Index No. M-21

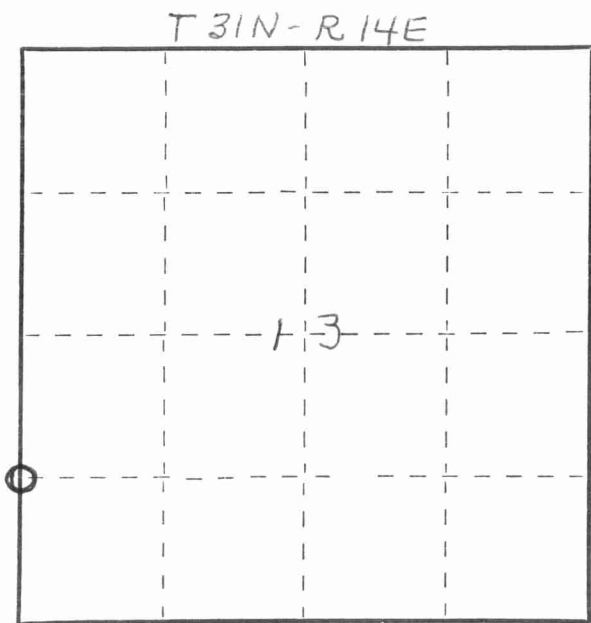
State of Wisconsin }  
 County of LANGLADE } ss.

I WILLIAM F. KELLY, do hereby certify that on the 5<sup>th</sup> day of DECEMBER, 1974, I found evidence of the SOUTH 1/8 corner of SECTION 14 & 13 Township 31, North, Range 14 EAST, Fourth Principal Meridian, as described hereon; and that from this evidence I established a new monument and accessories as described hereon to perpetuate the original location of this corner.

Resident witnesses:

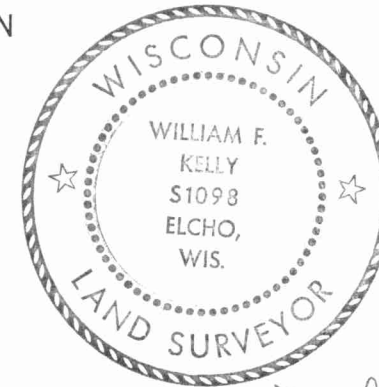
ROBERT DOEMEL  
 \_\_\_\_\_  
 \_\_\_\_\_  
 \_\_\_\_\_

FORM 983 H. C. MILLER CO., MILWAUKEE



○ = Corner monument restored.

History of original corner establishment:

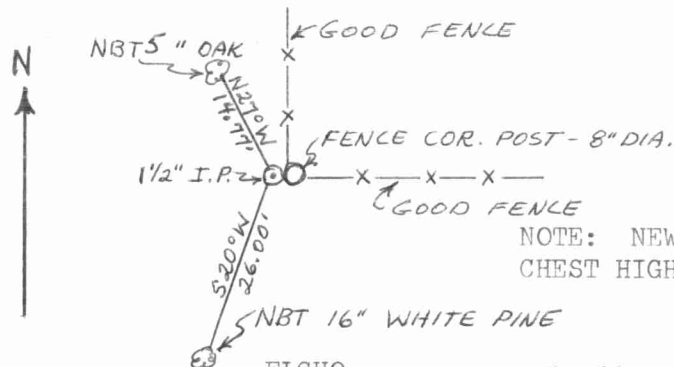


*William F. Kelly*

Description of corner evidence found:

1 1/2" IRON PIPE NEXT TO FENCE CORNER IDENTIFIED BY RESIDENT WITNESS AS THE CORNER.

Description of monument and accessories I established to perpetuate the original location of this corner.



SET 1 1/2" BLACK IRON PIPE WITH BRASS CAP MARKED:



Dated at ELCHO, Wis., this 5<sup>th</sup> day of DECEMBER, 1974

Signature William F. Kelly Title REGISTERED LAND SURVEYOR Registration No. S. 1098  
 (County Surveyor, Registered Land Surveyor, or other duly authorized official)

Office of Register of Deeds, County of \_\_\_\_\_, I hereby certify that the within instrument was filed in this office for record on the \_\_\_\_\_ day of \_\_\_\_\_, 19\_\_\_\_ at \_\_\_\_\_ o'clock \_\_\_\_\_ M.

\_\_\_\_\_  
 (Register of Deeds)

By \_\_\_\_\_ Deputy

