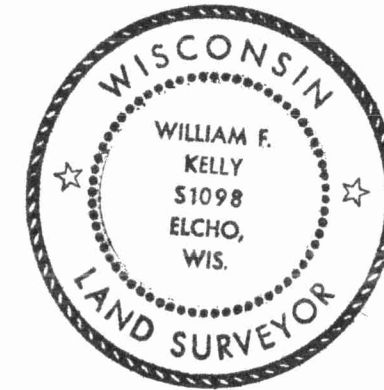


CERTIFIED LAND CORNER RESTORATION

Index No. K-24

State of Wisconsin }
County of LANGLADE } ss.

History of original corner establishment:



William F. Kelly

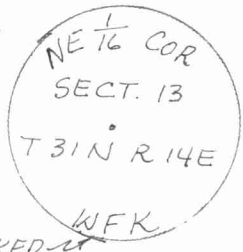
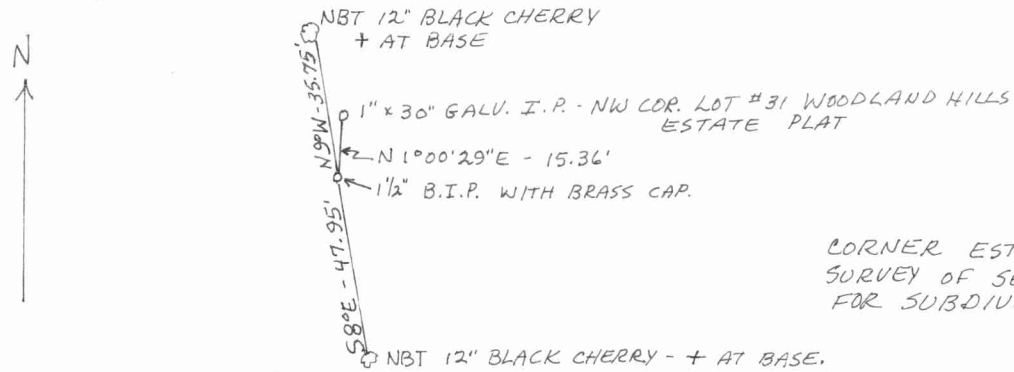
I William F. Kelly, do hereby certify that on the 8th day of October, 1975, I found evidence of the NE 1/4 corner of SECTION 13 Township 31, North, Range 14E, Fourth Principal Meridian, as described hereon; and that from this evidence I established a new monument and accessories as described hereon to perpetuate the original location of this corner.

Description of corner evidence found:

Resident witnesses:

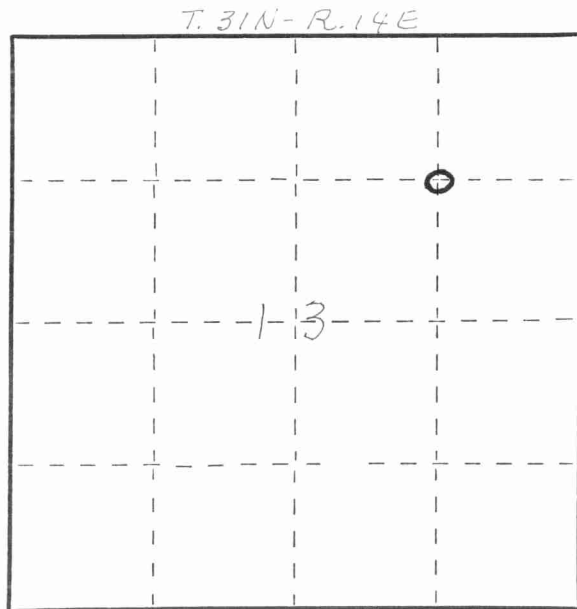
.....
.....
.....

Description of monument and accessories I established to perpetuate the original location of this corner.



CORNER ESTABLISHED FROM CONTROL SURVEY OF SECT. 13, T. 31 N. - R. 14 E. FOR SUBDIVISION.

FORM 985 H. C. MILLER CO., MILWAUKEE



○ = Corner monument restored.

Dated at ELCHO, Wis., this 8th day of OCTOBER, 1975.

Signature William F. Kelly Title Registered Land Surveyor Registration No. 51098
(County Surveyor, Registered Land Surveyor, or other duly authorized official)

Office of Register of Deeds, County of....., I hereby certify that the within instrument was filed in this office for record on the..... day of....., 19..... at..... o'clock..... M.

.....
(Register of Deeds)

By..... Deputy

