

CERTIFIED LAND CORNER RESTORATION

Index No. L-22

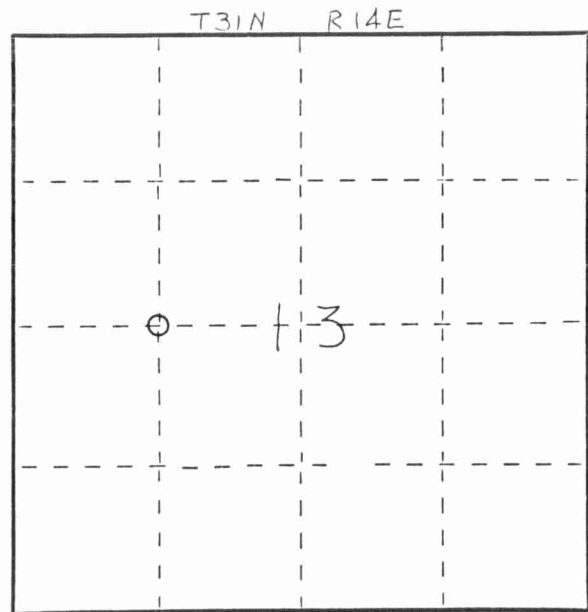
State of Wisconsin }
 County of LANGLADE } ss.

I WESLEY J. TRADEWELL, do hereby certify that on the 26TH day of APRIL, 1979, I found evidence of the NORTH 1/16 corner of S.W. 1/4, SECTION 13 Township 31, North, Range 14 EAST, Fourth Principal Meridian, as described hereon; and that from this evidence I established a new monument and accessories as described hereon to perpetuate the original location of this corner.

Resident witnesses:

.....

FORM 985 M. C. MILLER CO., MILWAUKEE



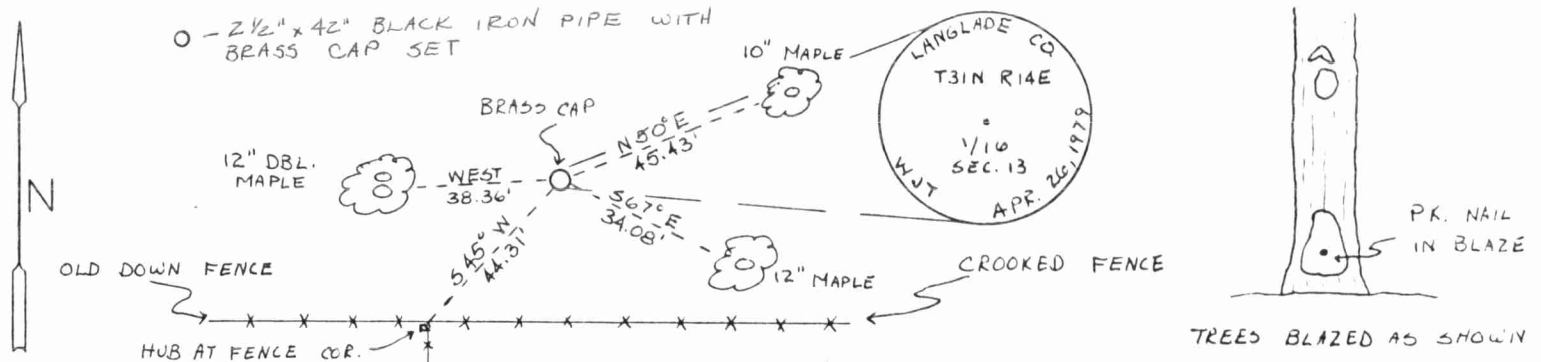
○ = Corner monument restored.

History of original corner establishment:

Description of corner evidence found:

FOUND NO RECORD OF ANY PREVIOUS CORNER. SET 1/16 CORNER EQUIDISTANT AND ON LINE BETWEEN THE W 1/4 CORNER AND CENTER OF SECTION 13.

Description of monument and accessories I established to perpetuate the original location of this corner.



Dated at ANTIGO, Wis., this 27TH day of APRIL, 1979.

Signature Wesley J. Tradewell Title REGISTERED LAND SURVEYOR Registration No. 1342
 (County Surveyor, Registered Land Surveyor, or other duly authorized official)

Office of Register of Deeds, County of....., I hereby certify that the within instrument was filed in this office for record on the..... day of....., 19..... at..... o'clock..... M.

.....
 (Register of Deeds)

By..... Deputy



