

CERTIFIED LAND CORNER RESTORATION

Index No. L-24

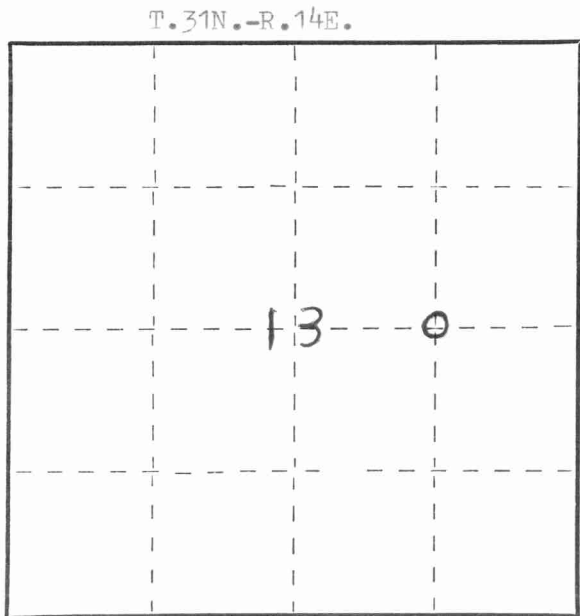
State of Wisconsin }  
County of LANGLADE } ss.

I WILLIAM F. KELLY, do hereby certify that on the 3rd day of DECEMBER, 1974, I found evidence of the EAST 1/8 corner of E-W 1/4 LINE SECTION 13 Township 31, North, Range 14 EAST, Fourth Principal Meridian, as described hereon; and that from this evidence I established a new monument and accessories as described hereon to perpetuate the original location of this corner.

Resident witnesses:

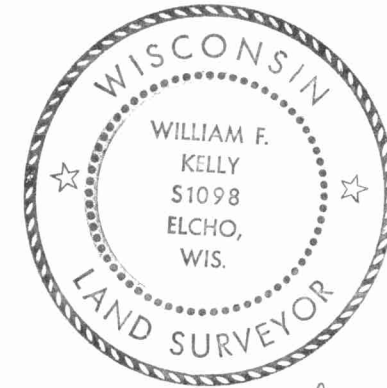
.....  
.....  
.....

FORM 985 H. C. MILLER CO., MILWAUKEE



○ = Corner monument restored.

History of original corner establishment:

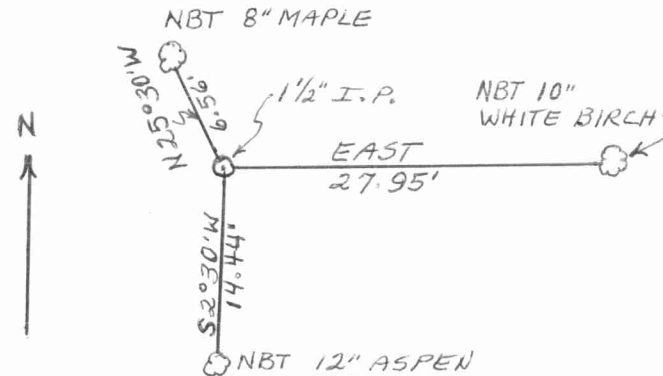


*William F. Kelly*

Description of corner evidence found:

ESTABLISHED THE EAST 1/8 CORNER ON THE E-W 1/4 LINE OF SECTION 13. T. 31N. - R. 14E. AS PART OF CONTROL SURVEY FOR SUBDIVISION.

Description of monument and accessories I established to perpetuate the original location of this corner.



SET 1/2" BLACK IRON PIPE WITH BRASS CAP MARKED:



Dated at ELCHO, Wis., this 3rd day of DECEMBER, 1974.

Signature William F. Kelly Title REGISTERED LAND SURVEYOR Registration No. S. 1098  
(County Surveyor, Registered Land Surveyor, or other duly authorized official)

Office of Register of Deeds, County of \_\_\_\_\_, I hereby certify that the within instrument was filed in this office for record on the \_\_\_\_\_ day of \_\_\_\_\_, 19\_\_\_\_ at \_\_\_\_\_ o'clock \_\_\_\_\_ M.

.....  
(Register of Deeds)

By \_\_\_\_\_ Deputy

