

CERTIFIED LAND CORNER RESTORATION

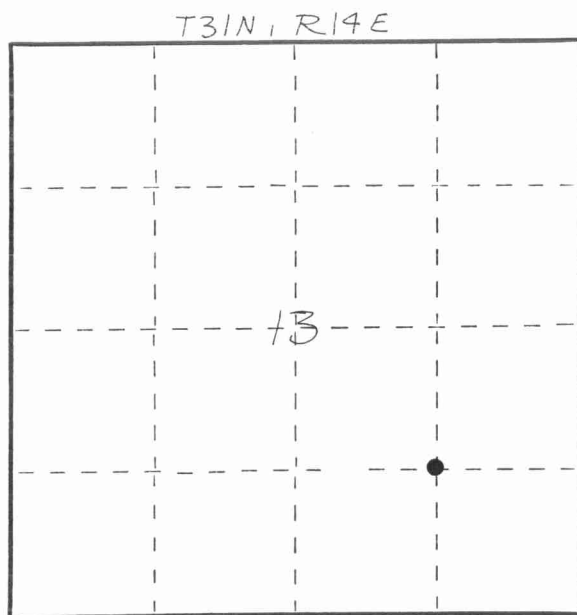
Index No. M-24

State of Wisconsin }  
County of LANGLADE } ss.

I WILLIAM F. KELLY, do hereby certify that on the 28<sup>th</sup> day of SEPT., 1981, I found evidence of the SE 1/16 corner of SEC. 13 Township 31, North, Range 19 EAST, Fourth Principal Meridian, as described hereon; and that from this evidence I established a new monument and accessories as described hereon to perpetuate the original location of this corner.

Resident witnesses:

.....  
.....  
.....

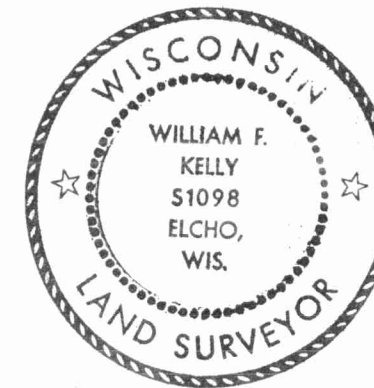


○ = Corner monument restored.

History of original corner establishment:

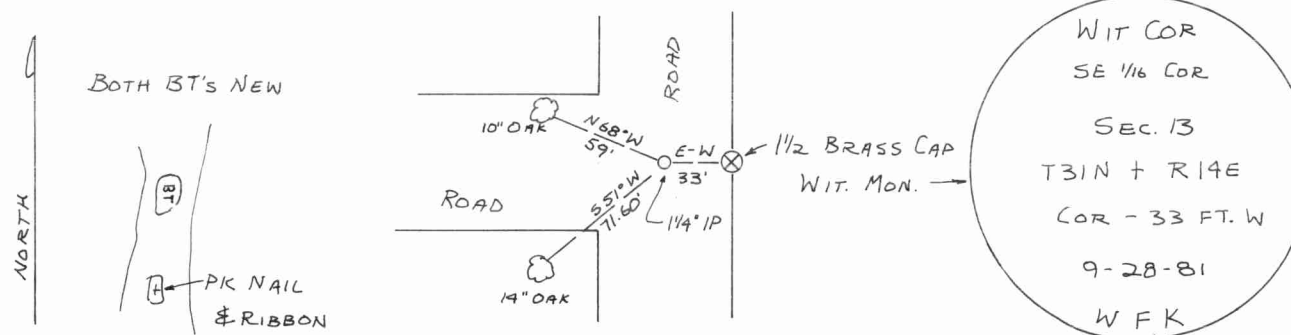
Description of corner evidence found:

CORNER EST. FROM  
SUBDIVISION OF THE  
SE 1/4 SECT 13 T31N R14E



William F. Kelly  
10-19-81

SET 1/2" x 42" BLACK IRON PIPE WITH BRASS CAP WIT. MON.  
Description of monument and accessories I established to perpetuate the original location of this corner.



Dated at ELCHO, Wis., this 28<sup>th</sup> day of SEPTEMBER, 1981

Signature William F. Kelly Title COUNTY SURVEYOR Registration No. 1098  
(County Surveyor, Registered Land Surveyor, or other duly authorized official)

Office of Register of Deeds, County of \_\_\_\_\_, I hereby certify that the within instrument was filed in this office for record on the \_\_\_\_\_ day of \_\_\_\_\_, 19\_\_\_\_ at \_\_\_\_\_ o'clock \_\_\_\_\_ M.

.....  
(Register of Deeds)

By \_\_\_\_\_ Deputy

