

CERTIFIED LAND CORNER RESTORATION

Index No. N-24

State of Wisconsin }
 County of LANGLADE } ss.

I WILLIAM F. KELLY, do hereby certify that on the 9th day of SEPT., 1981, I found evidence of the E 1/8 corner of ON S. LINE, SEC. 13 Township 31, North, Range 14 EAST, Fourth Principal Meridian, as described hereon; and that from this evidence I established a new monument and accessories as described hereon to perpetuate the original location of this corner.

Resident witnesses:

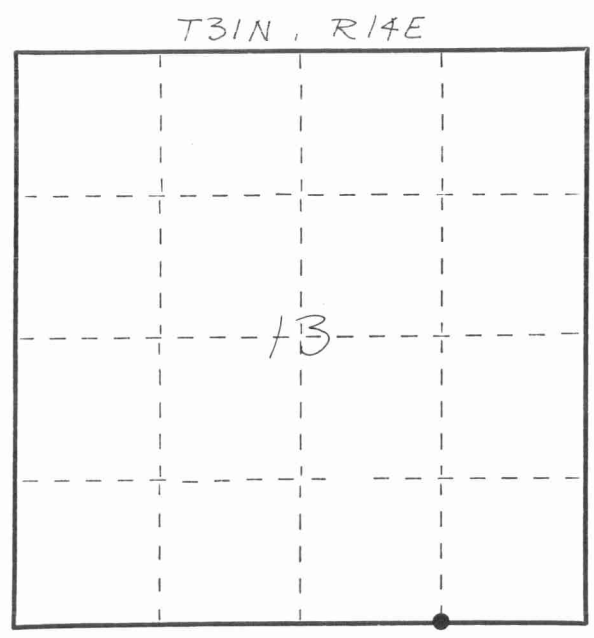
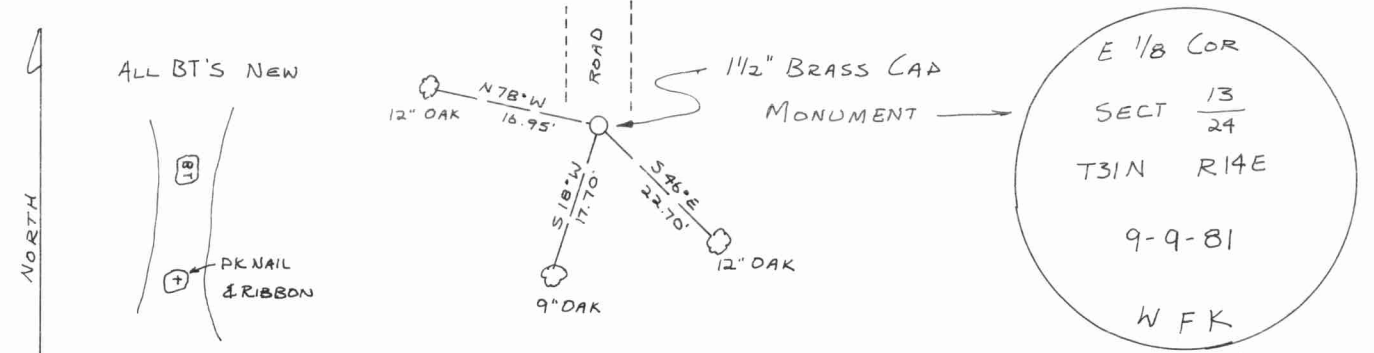
History of original corner establishment:
ORIGINAL CORNER ESTABLISHED BY
JAMES MCBRIDE IN SEPT., 1854

Description of corner evidence found:
CORNER SET AT MID POINT BETWEEN
S 1/4 COR AND SE COR SECT 13 T31N R14E



William F. Kelly

SET 1 1/2" x 42" BLACK IRON PIPE WITH BRASS CAP MONUMENT.
 Description of monument and accessories I established to perpetuate the original location of this corner.



○ = Corner monument restored.

Dated at ELCHO, Wis., this 9th day of SEPTEMBER, 1981.

Signature William F. Kelly Title COUNTY SURVEYOR Registration No. 1098
 (County Surveyor, Registered Land Surveyor, or other duly authorized official)

Office of Register of Deeds, County of _____, I hereby certify that the within instrument was filed in this office for record on the _____ day of _____, 19____ at _____ o'clock _____ M.

 (Register of Deeds)

By _____ Deputy

FORM 985 H. C. MILLER CO., MILWAUKEE

[Faint, illegible handwritten text]

[Faint, illegible handwritten text]

[Faint handwritten mark]

[Faint handwritten mark]