

CERTIFIED LAND CORNER RESTORATION

Index No. N-25

State of Wisconsin }
 County of LANGLADE } ss.

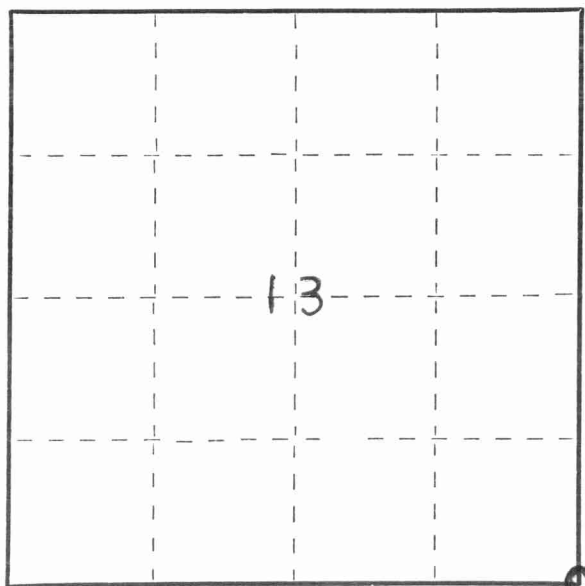
I WILLIAM F. KELLY, do hereby certify that on the 2nd day of DECEMBER, 1974, I found evidence of the SECTION corner of SECTIONS 13, 18, 24, & 19 Township 31, North, Range 14 EAST, Fourth Principal Meridian, as described hereon; and that from this evidence I established a new monument and accessories as described hereon to perpetuate the original location of this corner.

Resident witnesses:

ROBERT DOEMEL

FORM 985 H. C. MILLER CO., MILWAUKEE

T. 31N. - R. 14E.

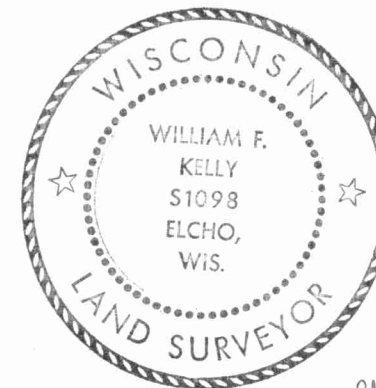


○ = Corner monument restored.

History of original corner establishment:

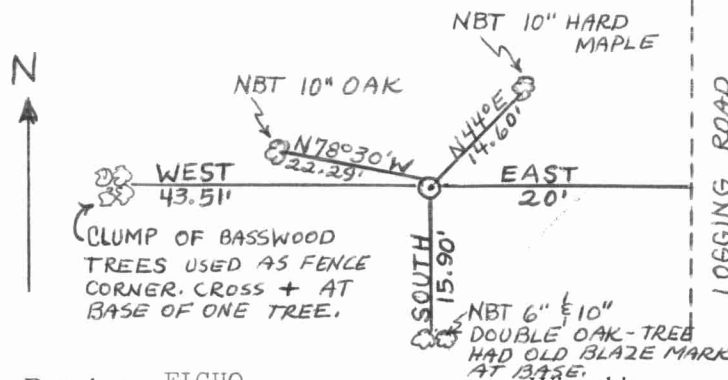
Description of corner evidence found:

CORNER RE*ESTABLISHED FROM COURT HOUSE RECORDS SHOWING BEARING FROM SECTION CORNER 13/18 AND FROM RESIDENT WITNESS, ROBERT DOEMEL. 24/19



William F. Kelly

Description of monument and accessories I established to perpetuate the original location of this corner.



SET SECTION CORNER 13/18
24/19
 2" BLACK IRON PIPE
 WITH BRASS CAP MARKED:

NEW BEARING-TREES
 BLAZED NBT CHEST
 HIGH AND MARKED
 WITH A + AT BASE



Dated at ELCHO, Wis., this 2nd day of DECEMBER, 1974.

Signature William F. Kelly Title REGISTERED LAND SURVEYOR Registration No. S. 1098
 (County Surveyor, Registered Land Surveyor, or other duly authorized official)

Office of Register of Deeds, County of _____, I hereby certify that the within instrument was filed in this office for record on the _____ day of _____, 19____ at _____ o'clock _____ M.

(Register of Deeds)

By _____ Deputy

