

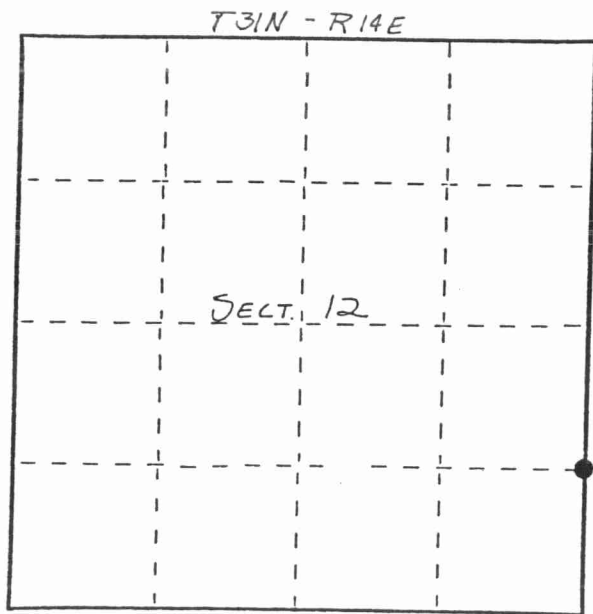
State of Wisconsin

County of LANGLADE } ss.

I WILLIAM F. KELLY, do hereby certify that on the 14<sup>th</sup> day of MARCH, 1983, I found evidence of the S. 1/8 corner of E. LINE, SECTION 12 Township 31, North, Range 14 EAST, Fourth Principal Meridian, as described hereon; and that from this evidence I established a new monument and accessories as described hereon to perpetuate the original location of this corner.

Resident witnesses:

.....  
.....  
.....



○ = Corner monument restored.

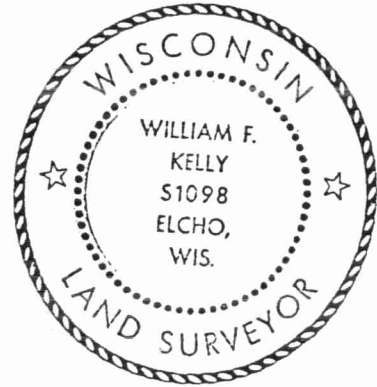
### CERTIFIED LAND CORNER RESTORATION

Index No. H-1

History of original corner establishment:  
CORNER NOT ESTABLISHED DURING ORIGINAL GOV'T SURVEY.

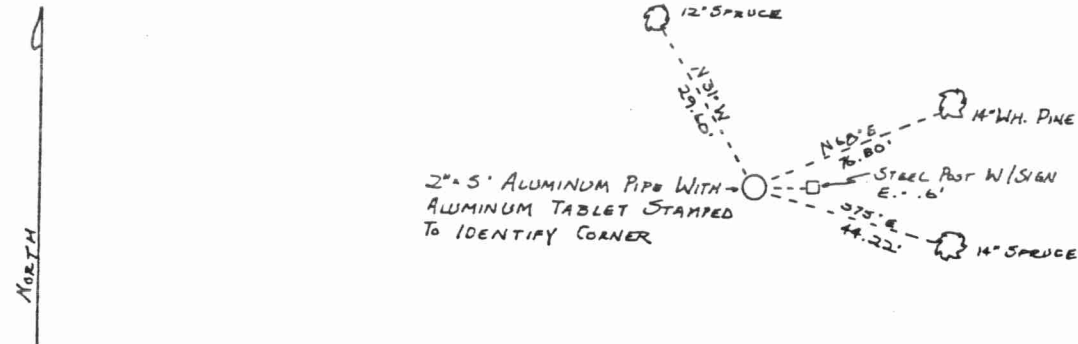
Description of corner evidence found:

CORNER SET ON LINE AT MIDDPOINT BETWEEN THE E. 1/8 CORNER & THE SE CORNER OF SECT. 12.  
SET A 2"x5" ALUMINUM MONUMENT.  
Work Done By John Fisher  
IN OCT 1982



*William F. Kelly*

Description of monument and accessories I established to perpetuate the original location of this corner.



Dated at ELCHO, Wis., this 14<sup>th</sup> day of MARCH, 1983.

Signature William F. Kelly Title COUNTY SURVEYOR Registration No. 1098  
(County Surveyor, Registered Land Surveyor, or other duly authorized official)

Office of Register of Deeds, County of \_\_\_\_\_, I hereby certify that the within instrument was filed in this office for record on the \_\_\_\_\_ day of \_\_\_\_\_, 19\_\_\_\_ at \_\_\_\_\_ o'clock \_\_\_\_\_ M.

.....  
(Register of Deeds)

By \_\_\_\_\_ Deputy