

CERTIFIED LAND CORNER RESTORATION

31-14

Index No. F-19

State of Wisconsin }
County of LANGLADE } ss.

I, ROBERT J. POSS, do hereby certify that on the 25TH day of MAY, 1968, I found evidence of the N 1/4 corner of ON 1/4 LINE SEC. 11 Township 31, North, Range 14 EAST, Fourth, Principal Meridian, as described hereon; and that from this evidence I established a new monument and accessories as described hereon to perpetuate the original location of this corner.

Resident witnesses:

.....
.....
.....

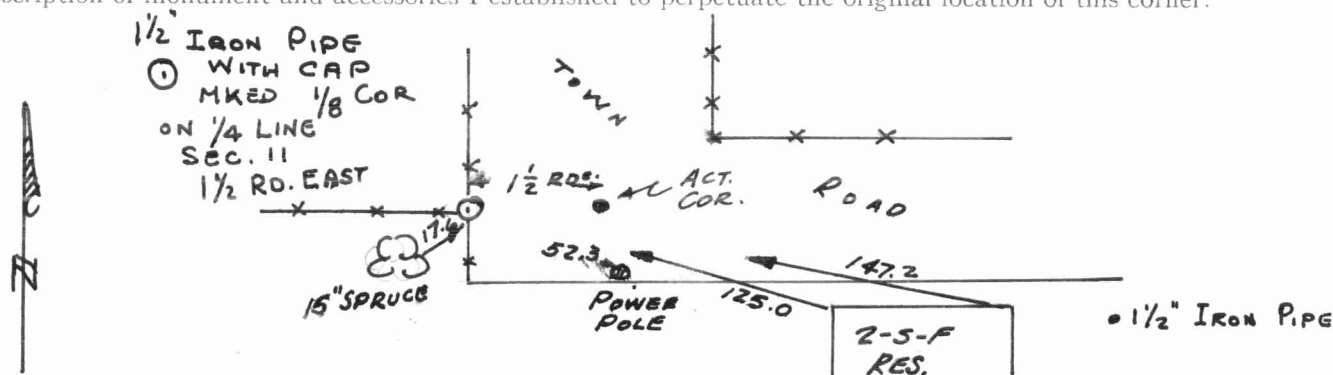
History of original corner establishment:

Description of corner evidence found:

FOUND 1/2" IRON PIPE UNDER BLACKTOP OF ROAD; WEBLEY 1921



Description of monument and accessories I established to perpetuate the original location of this corner.



Dated at ELCHO, Wis., this 27TH day of MAY, 1968.

Signature Robert J. Poss Title REG. LAND SURVEYOR Registration No. S-1
(County Surveyor, Registered Land Surveyor, or other duly authorized official)

Office of Register of Deeds, County of....., I hereby certify that the within instrument was filed in this office for record on the..... day of....., 19..... at..... o'clock..... M.

(Register of Deeds)

By..... Deputy

○ = Corner monument restored.

FORM 985 K. C. MILLER CO., MILWAUKEE

