

CERTIFIED LAND CORNER RESTORATION

Index No. 6-21

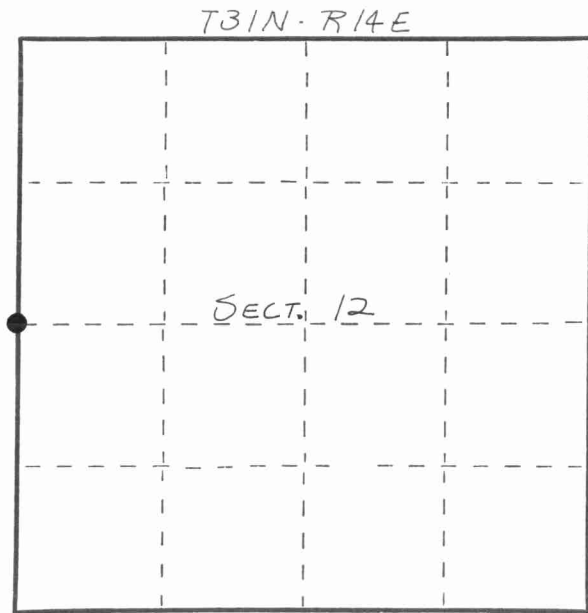
State of Wisconsin }
 County of LANGLADE } ss.

I WILLIAM F. KELLY, do hereby certify that on the 11th day of MARCH, 1983, I found evidence of the W. 1/4 corner of SECTION 12 Township 31, North, Range 14 EAST, Fourth Principal Meridian, as described hereon; and that from this evidence I established a new monument and accessories as described hereon to perpetuate the original location of this corner.

Resident witnesses:

.....

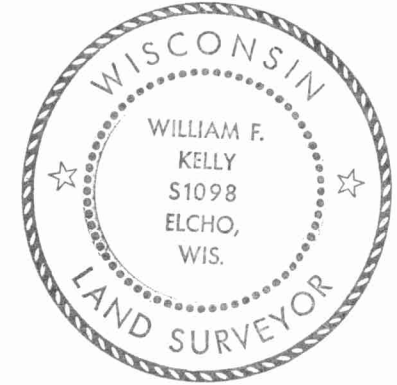
FORM 985 H. C. MILLER CO., MILWAUKEE



○ = Corner monument restored.

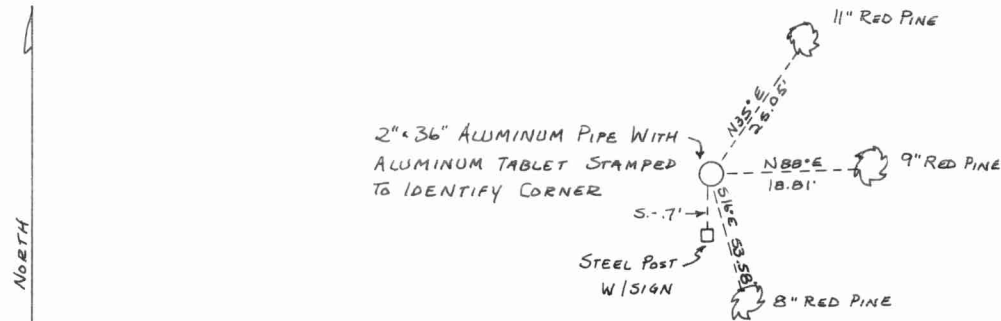
History of original corner establishment:
 ORIGINAL CORNER ESTABLISHED BY
 JAMES McBRIDE IN 1857.

Description of corner evidence found:
 REPLACED IRON BED RAIL FOUND AT
 FENCE CORNER POST. DISTANCES
 CORRESPOND REASONABLY N. & S.
 REPLACED BED RAIL WITH 2"x36"
 ALUMINUM MONUMENT. ABOVE
 WORK DONE BY JOHN FISHER
 IN OCT. 1982



William F. Kelly

Description of monument and accessories I established to perpetuate the original location of this corner.



Dated at ELCHO, Wis., this 11th day of MARCH, 1983

Signature William F. Kelly Title COUNTY SURVEYOR Registration No. 1098
 (County Surveyor, Registered Land Surveyor, or other duly authorized official)

Office of Register of Deeds, County of _____, I hereby certify that the within instrument was filed in this office for record on the _____ day of _____, 19____ at _____ o'clock _____ M.

.....
 (Register of Deeds)

By _____ Deputy

