

CERTIFIED LAND CORNER RESTORATION

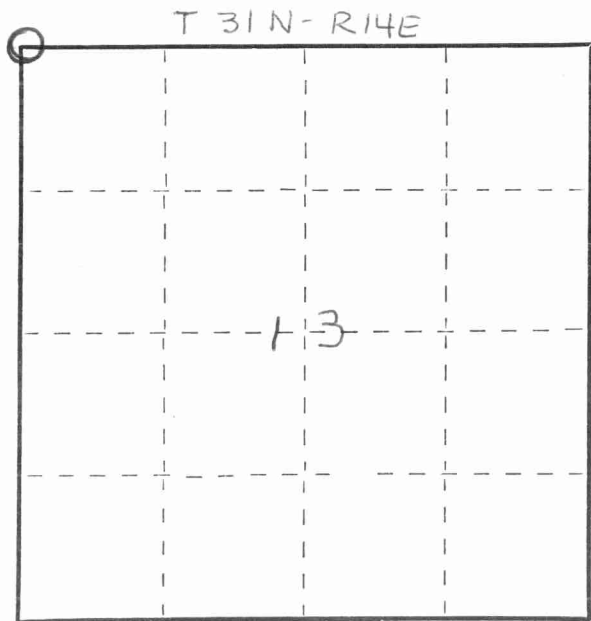
Index No. J-21

State of Wisconsin }
County of LANGLADE } ss.

I, WILLIAM F. KELLY, do hereby certify that on the 5th day of DECEMBER, 1974, I found evidence of the SECTION corner of SECTION 11, 12, 14, & 13 Township 31, North, Range 14 EAST, Fourth Principal Meridian, as described hereon; and that from this evidence I established a new monument and accessories as described hereon to perpetuate the original location of this corner.

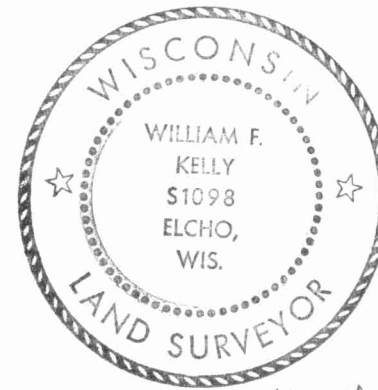
Resident witnesses:

.....
.....
.....



○ = Corner monument restored.

History of original corner establishment:

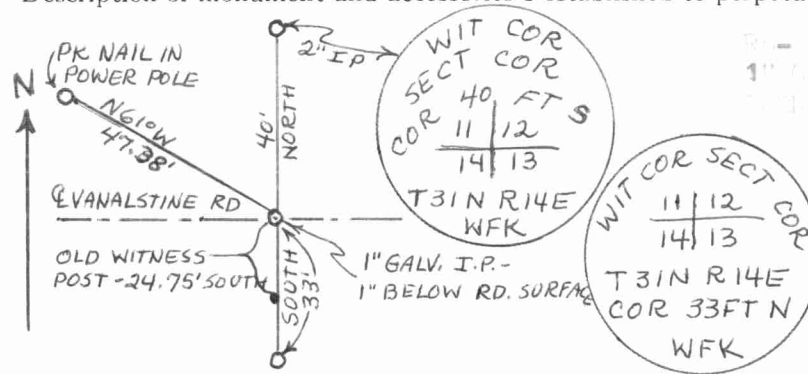


William F. Kelly

Description of corner evidence found:

SECTION 11, 12, 14, & 13 T31N R14E WFK
CRITICAL CORNER TO PERPETUATE ORIGINAL

Description of monument and accessories I established to perpetuate the original location of this corner.



NOTE: THIS CORNER IS TO BE MARKED BY A 1" GALV. I.P. 1" BELOW RD. SURFACE.

NOTE: THIS CORNER IS TO BE MARKED BY A 1" GALV. I.P. 1" BELOW RD. SURFACE.

Dated at LINCOLN, Wis., this 5th day of DECEMBER, 1974.

Signature William F. Kelly Title COUNTY SURVEYOR Registration No. 1098
(County Surveyor, Registered Land Surveyor, or other duly authorized official)

Office of Register of Deeds, County of....., I hereby certify that the within instrument was filed in this office for record on the..... day of....., 19..... at..... o'clock..... M.

(Register of Deeds)

By..... Deputy

