

CERTIFIED LAND CORNER RESTORATION

31-14

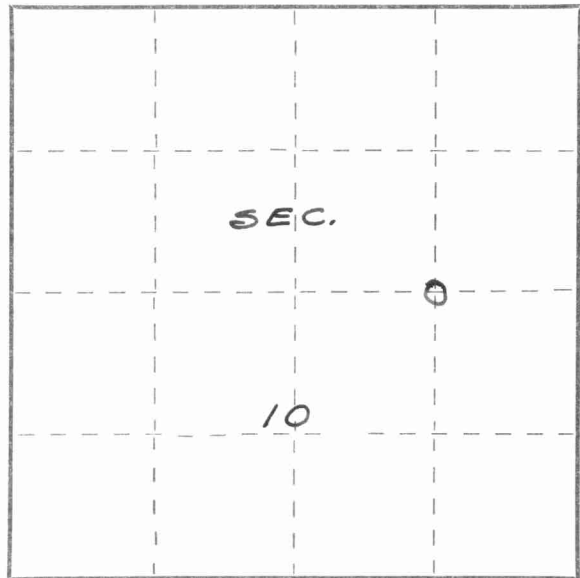
Index No. GT 16

State of Wisconsin }  
County of LANGLADE } ss.

I, ROBERT J. POSS, do hereby certify that on the 24TH day of MAY, 19 68, I found evidence of the E 1/16 Post ON 1/4 LINE corner of SEC. 10 Township 31, North, Range 14 EAST, Fourth, Principal Meridian, as described hereon; and that from this evidence I established a new monument and accessories as described hereon to perpetuate the original location of this corner.

Resident witnesses:

.....  
.....  
.....

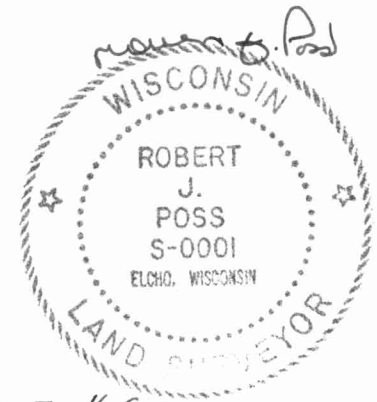


○ = Corner monument restored.

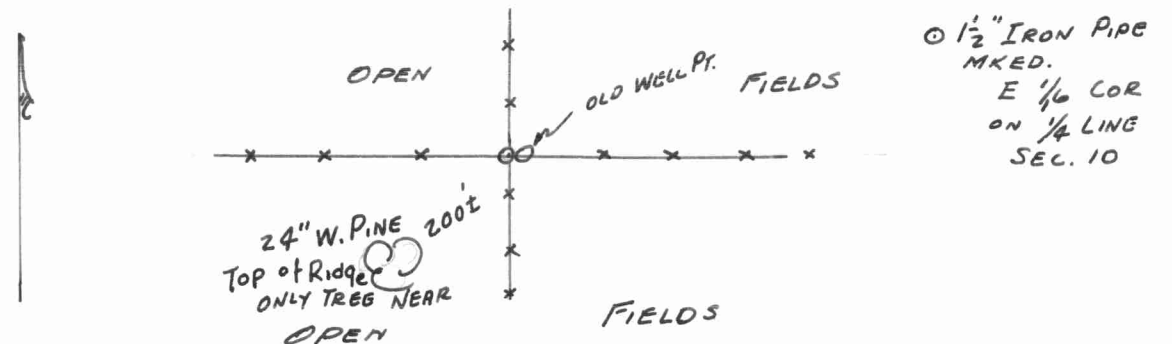
History of original corner establishment:

Description of corner evidence found:

FOUND WELL POINT; CHECK BY CHAIN - SEC. COR TO 1/4 COR



Description of monument and accessories I established to perpetuate the original location of this corner.



Dated at ELCHO, Wis., this 27TH day of MAY, 19 68.

Signature Robert J. Poss Title REG. LAND SURVEYOR Registration No. S-1  
(County Surveyor, Registered Land Surveyor, or other duly authorized official)

Office of Register of Deeds, County of....., I hereby certify that the within instrument was filed in this office for record on the.....day of....., 19..... at.....o'clock..... M.

.....  
(Register of Deeds)  
By.....Deputy

FORM 985 H. C. MILLER CO., MILWAUKEE

