

CERTIFIED LAND CORNER RESTORATION

Index No. G-9

State of Wisconsin }
 County of LANGLADE } ss.

I WILLIAM F. KELLY, do hereby certify that on the 6th day of DECEMBER, 1982, I found evidence of the E. 1/4 corner of SECT. 8 Township 31, North, Range 14 EAST, Fourth Principal Meridian, as described hereon; and that from this evidence I established a new monument and accessories as described hereon to perpetuate the original location of this corner.

Resident witnesses:

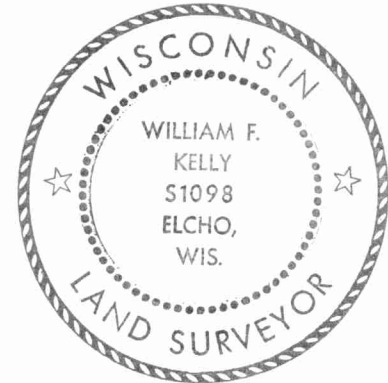
LOUIS WILSON

History of original corner establishment:

ORIGINAL CORNER ESTABLISHED
 BY JAMES McBRIDE, SEPT., 1857.

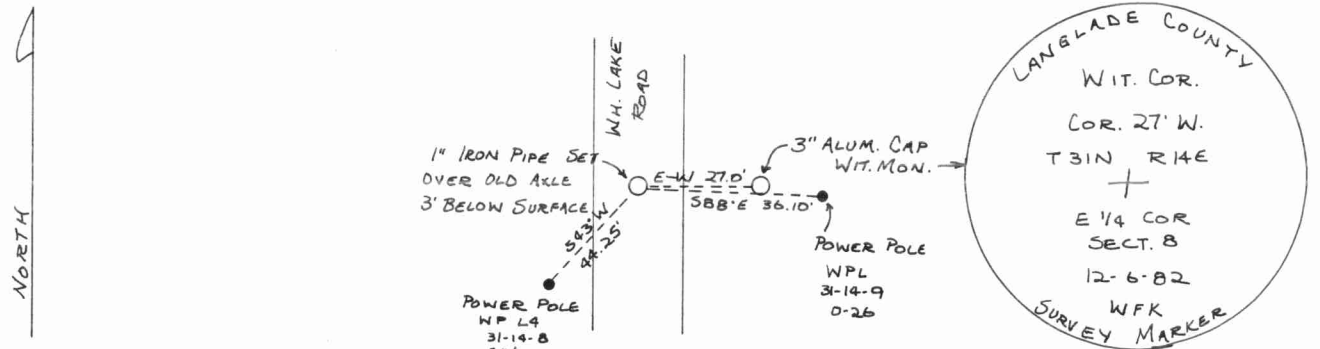
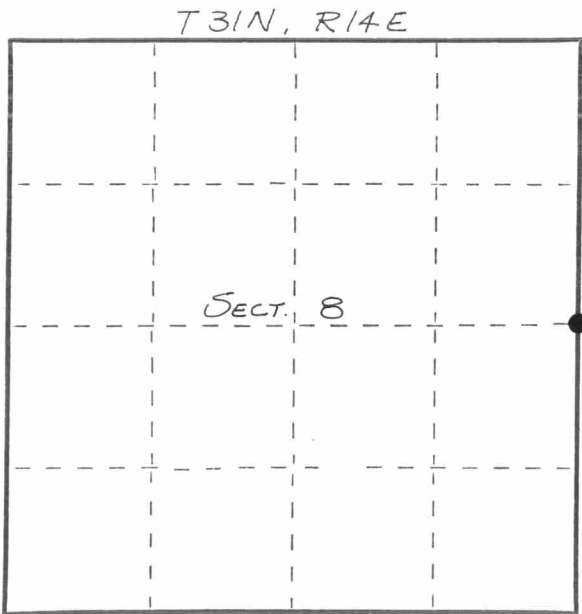
Description of corner evidence found:

FOUND AXLE 3' BELOW ROAD SURFACE. SET 1" IRON PIPE OVER AXLE. SET 3" ALUM. CAP ALUMINUM CAP WITNESS MONUMENT.



William F. Kelly
 12-14-82

Description of monument and accessories I established to perpetuate the original location of this corner.



Dated at ELCHO, Wis., this 6th day of DECEMBER, 1982.

Signature William F. Kelly Title COUNTY SURVEYOR Registration No. 1098
 (County Surveyor, Registered Land Surveyor, or other duly authorized official)

Office of Register of Deeds, County of _____, I hereby certify that the within instrument was filed in this office for record on the _____ day of _____, 19____ at _____ o'clock _____ M.

(Register of Deeds)

By _____ Deputy

○ = Corner monument restored.

