

# LANGLADE COUNTY U.S. PUBLIC LAND SURVEY MONUMENT LOCATION RECORD

11407 0000

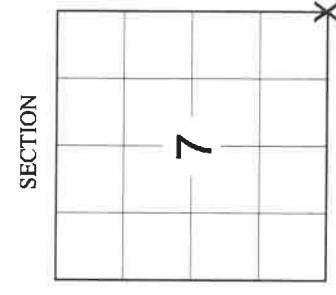
SECTION 7  
TOWNSHIP 31 N  
RANGE 14 E

J5

NO.

WOLF RIVER  
CITY, VILLAGE, TOWN

4311407 0000 2021



FOUND  SET   
RESET  RE-TIED

LANDMARK  BENCHMARK \_\_\_\_\_  
CORNER IDENTITY: SNM-1 STEEL NAIL MARKER

LANGLADE COUNTY COORDINATE: N: 353153.576  
E: 715207.430

ELEVATION-(FEET): \_\_\_\_\_ DATUM: NAD 83(2011)

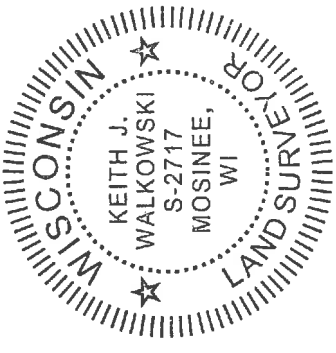
WEATHER: SUNNY  
DATE OF SURVEY: 7/27/2021 TEMPERATURE: 82 °F

SURVEY PARTY: CHRISTOPHER FIERI & COLLIN MARQUARDT

## BASIS FOR MONUMENT LOCATION:

(DESCRIBE METHOD OF SURVEY AND CORNER AUTHENTICATION)

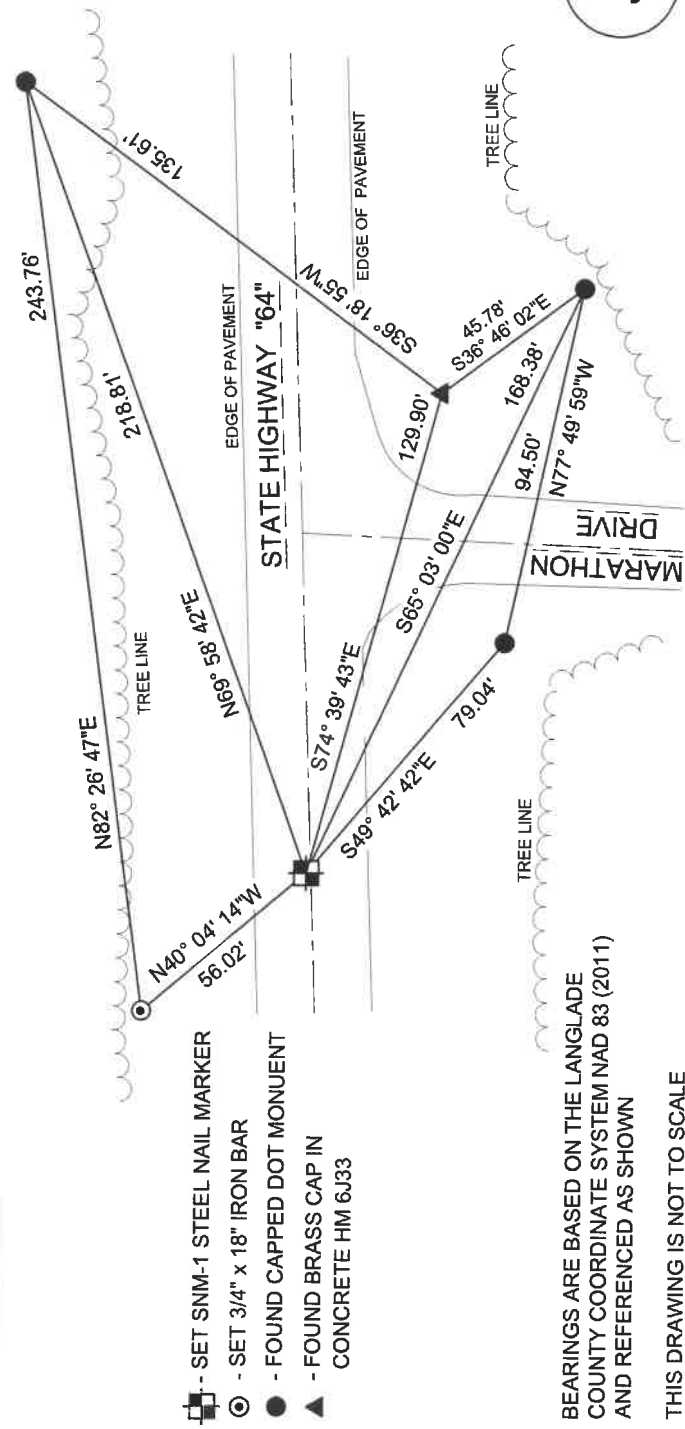
SEARCHED FOR THE SOUTHEAST CORNER AND FOUND A SMP NAIL AND THREE TIES AS SHOWN ON THE RECORD TIE SHEET DATED 7-15-1992 BY MILO STEFAN. THE SMP NAIL MATCHED THE TIES VERY WELL AND WAS HELD FOR THE CORNER LOCATION. SET ONE NEW WITNESS TIE TO THE NORTHWEST AND LOCATED A BRASS CAP IN CONCRETE (HM 6J33) FOR AN ADDITIONAL TIE. SET A SNM-1 STEEL NAIL MARKER AT THE CORNER LOCATION UPON COMPLETION OF THE S.T.H. "64" RESURFACING PROJECT AND PERPETUATED THE CORNER LOCATION AS SHOWN BELOW.



CERTIFIED CORRECT:  
*Keith J. Walkowski*  
KEITH J. WALKOWSKI S-2717  
Registered Land Surveyor  
DATE: NOVEMBER 7TH, 2021

FIELD BOOK NO. \_\_\_\_\_ NA \_\_\_\_\_ PAGE NO. NA  
COMPANY RIVERSIDE LAND SURVEYING LLC

## TIE SKETCH:



- - SET SNM-1 STEEL NAIL MARKER
- ⊙ - SET 3/4" x 18" IRON BAR
- - FOUND CAPPED DOT MONUMENT
- ▲ - FOUND BRASS CAP IN CONCRETE HM 6J33

BEARINGS ARE BASED ON THE LANGLADE COUNTY COORDINATE SYSTEM NAD 83 (2011) AND REFERENCED AS SHOWN

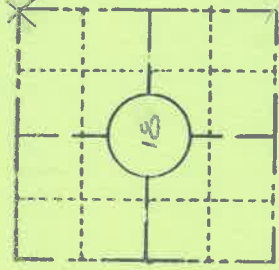
THIS DRAWING IS NOT TO SCALE

J5

NO.

FIELD SURVEY NOTES  
**PRESERVATION OF LANDMARKS**  
 (Pursuant to Section 59.635(7) Wisconsin Statutes  
 E-D-707-69

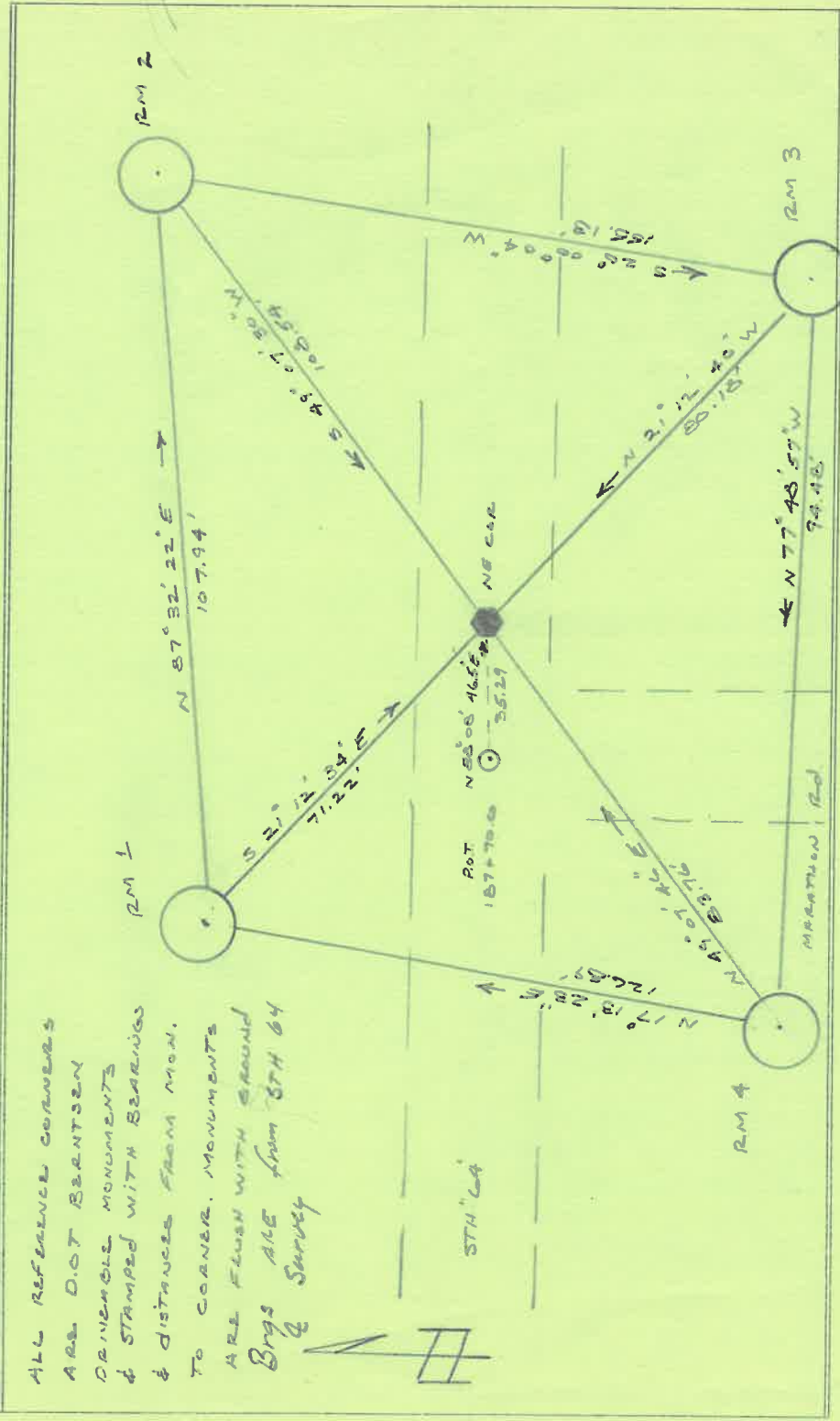
COUNTY	LANGELADE		
TOWN	WOLF RIVER		
HIGHWAY	STH "LA"		
SECTION	TOWNSHIP	RANGE	
18	T 31 N	R 14 E	
TYPE OF LANDMARK			
PK NAIL BY KEITH VREBLAND			



**LOCATION SKETCH**  
 (Location of landmark indicated by "x")

This space for copy of field notes or ties to the above described landmarks  
**AGREES WITH REFERENCES FROM CERT LAND CORNER RESTORATION SHEET**

ALL REFERENCE CORNERS  
 ARE D.O.T BEANTSEN  
 DRIVABLE MONUMENTS  
 & STAMPED WITH BEARINGS  
 & DISTANCES FROM MON.  
 TO CORNER. MONUMENTS  
 ARE FLUSH WITH GROUND  
 BRGS ARE FROM STH 64  
 & Survey



FILED UNDER PROJECT		COUNTY CLERK'S OFFICE	
9140-01-70		COUNTY OF	
DISTRICT OFFICE NUMBER	CITY	DATE RECEIVED FOR RECORD	WISCONSIN } SS DATE COPY SENT TO COUNTY SURVEYOR
03-07	ONEIDA		
LOCATED OR ESTABLISHED BY		SIGNATURE OF COUNTY CLERK	
NAME Robert B. JOHNSON			
TITLE SURVEY CREW CHIEF			
DATE 5-8-85			
Under the direct Supervision of			
MICHAEL HESS 500809			

**PRESERVATION OF LANDMARKS**

# U.S. PUBLIC LAND SURVEY MONUMENT RECORD

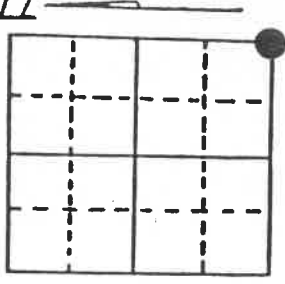
Note: This form is intended and designed to fulfill all requirements of Wisconsin Administrative Code, Chapter A-E 7.08 U.S. Public Land Survey Monument Record (3) (a) (b) (c) (d) (e) (f) (g) (h) (i). An additional sheet may be added if necessary to conform with said requirements.

(a) Corner location: Township 31 North

Range 14 East/West

Town/City/Village Wolf River

County Langlade



Section 7

(b) (f) (g) (h) Description of monument found at this corner and if it was accepted, state all evidence (material, testimonial, occupational, plats, records, other monuments) used as a basis for accepting. If not accepted or if nothing was found, state evidence used as basis for establishing location. If reestablished through lost corner proportionate methods, indicate all monuments, distances and directions used to establish. Indicate type of monument found or set and sign post.

9/1857 - James McBride established this corner at 80.00 chains and set a wood post with four BTs:

6" Sugar, N2°E, 27 Links (17.82') 8" Birch, N68°E, 24 Links (15.84')

14" Birch, S54°W, 46 Links (30.36') 12" Hemlock, N30°W, 37 Links (24.42')

6/14/1898 - Dorr measured East and West from this corner for a road survey. Distances: West = 39.3 Chains East = 40.5 Chains

6/1973 - Vreeland placed PK nail in highway center line with fence Northerly.

1988 - D.O.T. tied off this PK nail with four monuments.

7/7/1992 - Milo E. Stefan investigated this corner position and declare this corner as

lost and restore it by proportionate measure from Dorr's 1898 distances

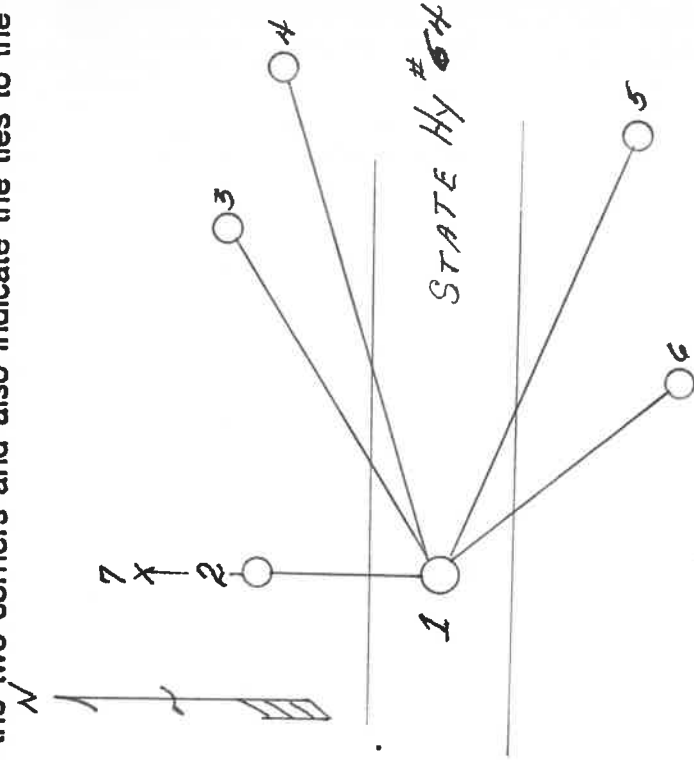
and on line between J-3 and J-7. We placed a railroad spike in surface of

State Highway #64 for Section Corner with a Witness Corner North, 33.00 feet.

(c) (d) (e) Plan view of corner with ties to at least 4 witness monuments. If in disagreement with previously established corner, show the distances between the two corners and also indicate the ties to the disputed corner.

- 1) Railroad spike.
- 2) 2" x 42" aluminum monument in mound of stone for Witness Corner.
- 3) D.O.T. reference monument, N54°E, 120.32'.
- 4) D.O.T. reference monument, N70°E, 218.82'.
- 5) D.O.T. reference monument, S65°E, 168.35'.
- 6) D.O.T. reference monument, S49°E, 79.02'.
- 7) Plastic sign post, North of W.C., 1.0'.

Distances to nail in side of BTs.  
Stump blaze scribed "BT".



(i) I, Milo E. Stefan

(type or print name) certify that the corner location on this record was determined by me or under my direction and control and that this U.S. Public Land Survey Monument Record is correct and complete to the best of my knowledge and belief.

*Milo E. Stefan*

Signature

July 15, 1992

Date

Index No. J-5



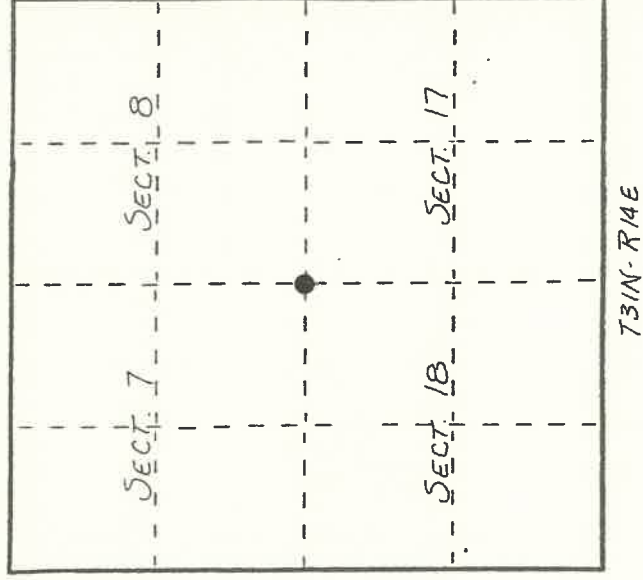
Stamp

# U. S. PUBLIC LAND SURVEY MONUMENT RECORD

**I N S T R U C T I O N S :**

This record shall show the location of the corner and shall include all of the following nine elements (a through i).

- (a) Identify the corner by reference to the U.S. public land survey system.
- = Corner monument restored.
- CORNER ORIGINALLY ESTABLISHED BY ALFRED MILLAND IN OCT., 1857.*



- (b) Describe any record evidence, monument evidence, occupational evidence, testimonial evidence or any other material evidence you considered, and whether the monument was found or placed.

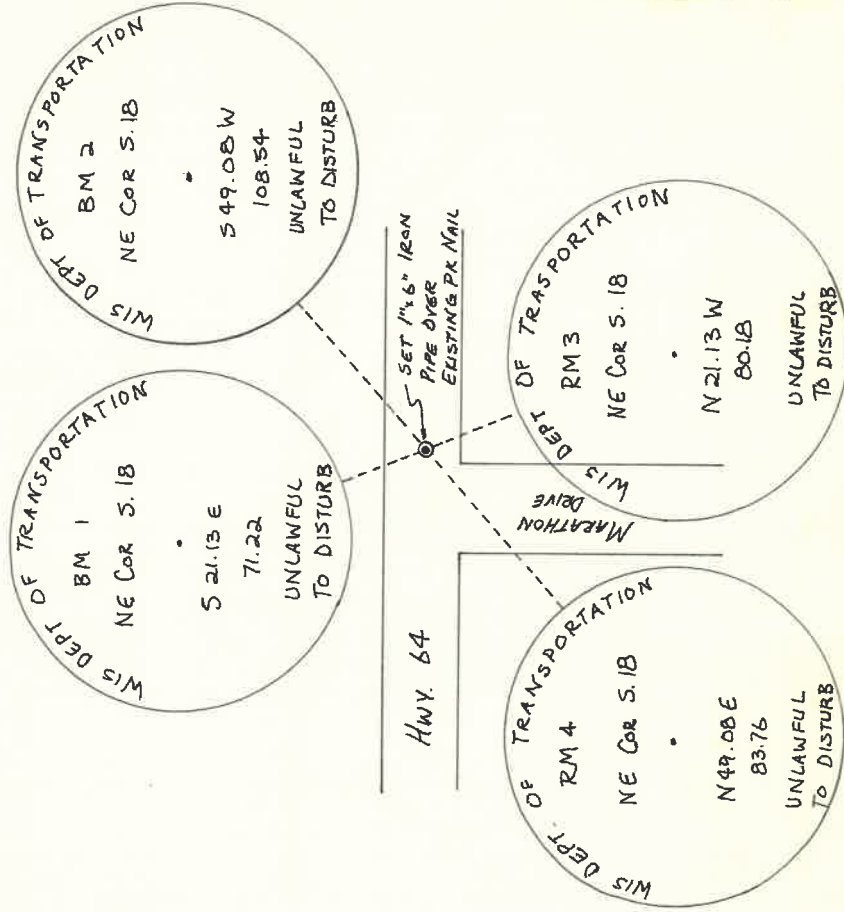
*FOUND IN PLACE: LARGE PK NAIL WITH 4 3" ALUMINUM CAPPED WITNESS MONUMENTS.*

*SET A 1"x6" IRON PIPE OVER PK NAIL.*

*NEW WITNESS MONUMENTS SET DUE TO ROAD CONSTRUCTION*

- (c) In the plan view drawing below, provide reference ties to at least 4 witness monuments, or, if the location is within a municipality, to at least 2 witness monuments. (Witness monuments shall be made of concrete, natural stone, iron or other equally durable material.) Describe witness monuments.

- (d) Show a plan view drawing depicting the relevant monuments and reference ties which is sufficient in detail to enable accurate relocation of the corner monument if the corner monument is disturbed. Indicate north.



(e) Describe any material discrepancy between the location of the corner as restored or reestablished and the location of that corner as previously restored or reestablished by distance and direction. Show the discrepancy on the plan view drawing under (d), above. Show the distances between the corner as previously restored or reestablished and (1) the corner as restored or reestablished, and (2) to at least 2 of the witness monuments shown on the drawing in (d), above.

*NONE.*

(f) Was the corner restored through acceptance of (1) an obliterated evidence location, or, (2) a found perpetuated location?  
(2)

(g&h) Was the corner reestablished through lost corner proportionate methods? If so, show the method, including the directions and distances to other public land survey corners used as evidence or used for proportioning in determining the corner location?

*No.*

(i) I, WILLIAM F. KELLY  
(type or print name) certify that the corner location shown on this record was determined by me or under my direction and control and that this U.S. Public Land Survey Monument Record is correct and complete to the best of my knowledge and belief.

William F. Kelly  
Signature

9-17-65  
Date

