

CERTIFIED LAND CORNER RESTORATION

Index No. E-3

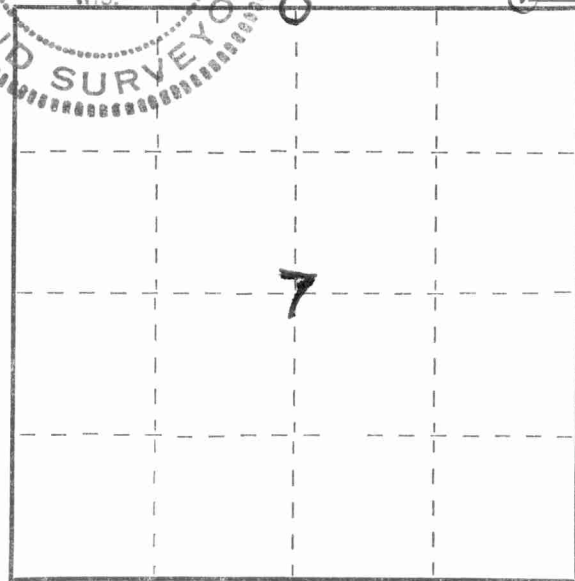
State of Wisconsin }  
County of Wood } ss.

I Keith R. Vreeland, do hereby certify that on the 4th, about June, 1973, I found evidence of the North 1/4 corner of Section 7 Township 31 N, North, Range 14 E, Fourth, Principal Meridian, as described hereon; and that from this evidence I established a new monument and accessories as described hereon to perpetuate the original location of this corner.

Resident witnesses:

as shown on the tie sketch.

FORM 985 H. C. MILLER CO., MILWAUKEE



○ = Corner monument restored.

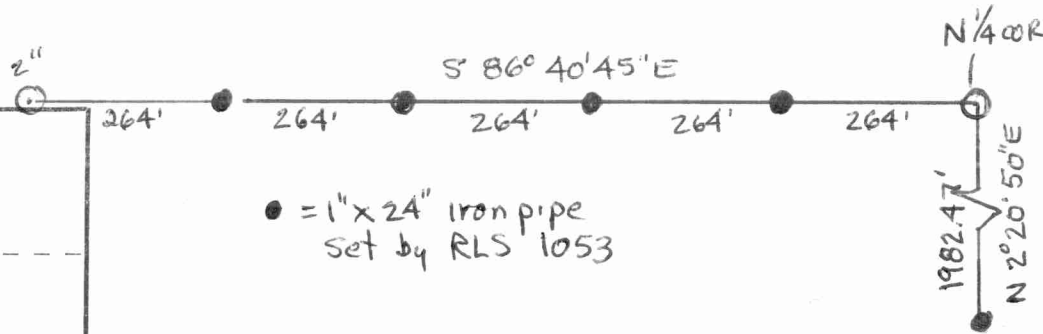
History of original corner establishment:

See history of retracement as stated on Index Number \_\_\_\_\_ for the southeast corner of Section 7.

Description of corner evidence found:

No evidence of original corner. Found several large trees that could have been bearing trees. Cut away bark and layers of wood but could not locate bearing marks. East-West fence runs very straight from the west to this location. Set corner to fit evidence and measurements.

Description of monument and accessories I established to perpetuate the original location of this corner.



● = 1" x 24" iron pipe set by RLS 1053

Corner is a 2" x 30" iron pipe 3.65# 1-ft.



Dated at Wis. Rapids, Wis., this 20th day of May, 1975

Signature Keith R. Vreeland Title Registered Land Surveyor Registration No. S-0931  
(County Surveyor, Registered Land Surveyor, or other duly authorized official)

Office of Register of Deeds, County of \_\_\_\_\_, I hereby certify that the within instrument was filed in this office for record on the \_\_\_\_\_ day of \_\_\_\_\_, 19\_\_\_\_ at \_\_\_\_\_ o'clock \_\_\_\_\_ M.

(Register of Deeds)

By \_\_\_\_\_ Deputy

