

U.S. PUBLIC LAND SURVEY MONUMENT RECORD

(Prepared and as required by S. A-E 7.08 WI Administrative Code)

The East 1/4 corner of Section 4, T. 31 N., R. 14 E., Langlade County, WI

Corner was: (check all that apply)

- Restored through acceptance of an obliterated evidence location.
- Restored through acceptance of a found perpetuated location.
- Determined to be lost and re-established through proportionate methods.
(Show bearings and distances to PLSS corners used for proportioning.)
- Restored/recovered/reestablished in a location that differs from a previously established position. (Show difference in plan view below.)
- Check here if additional information is shown on the reverse side of this form.

Describe record evidence, recovered physical evidence, occupational evidence, testimonial evidence and all other evidence considered in the recovery/restoration of the corner.

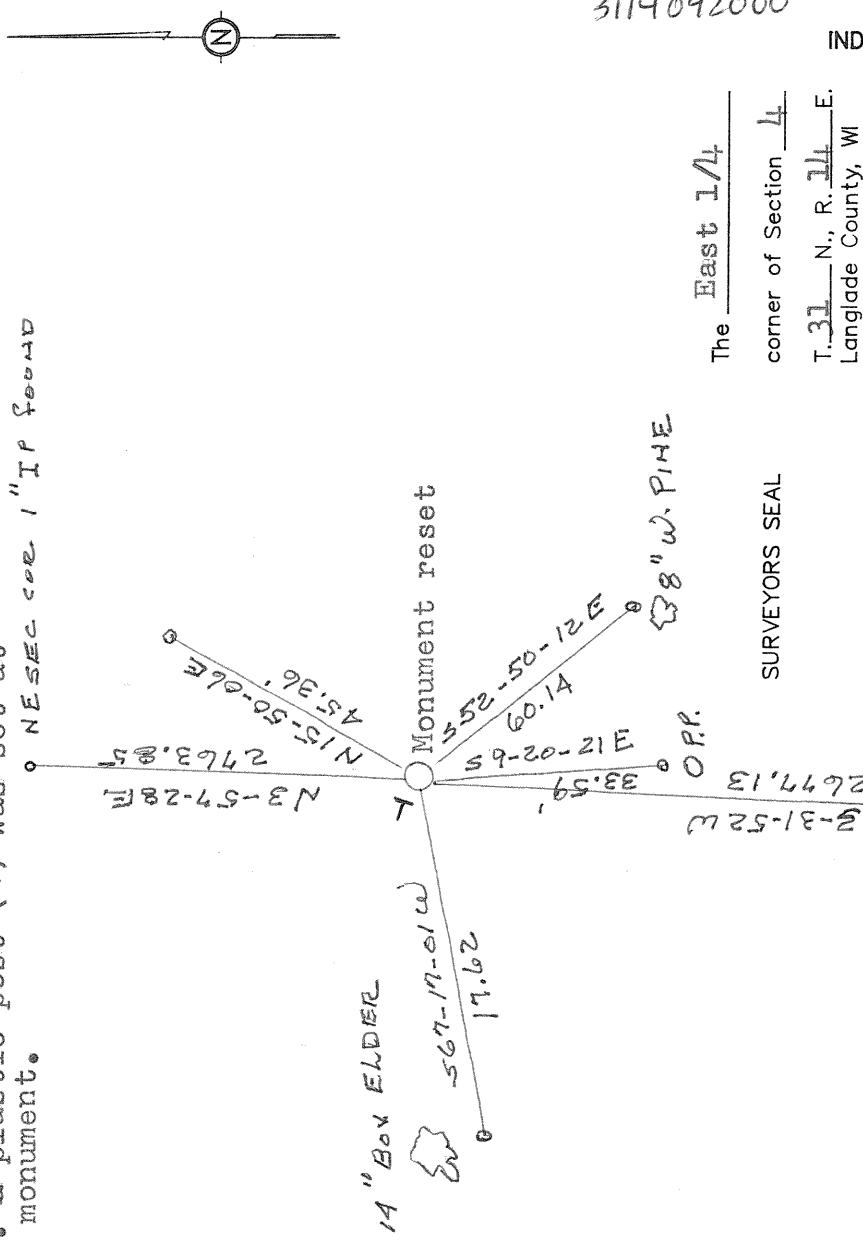
Original survey done in 1857 by James McBride. At that time the witness corners were Birch 30 N30W 161ks and a Birch 22 S67E 481ks. In July 1969 Robert Poss set a monument at the intersection of Old fences. He set a 1½ inch pipe with brass cap marked to designate the corner. In December 1995 Higginbotham located this corner and set a rod into the center of the monument and made witness ties to the monument. In July 1998 I found this monument and there was no cap to designate the corner. I dug the old monument out of the ground and set a new monument in place. I used Higginbotham's witness corners and set red plastic caps in the iron pipes and retied.

Physical description of the monument set:

Set 2 inch iron pipe with brass cap stamped to designate the corner.

Describe the accessories used to perpetuate the location of the corner. Include a plan view drawing and indicate accessories found/set. Describe measuring point on bearing trees. Show any topographic features that would aid in future recovery of the corner.

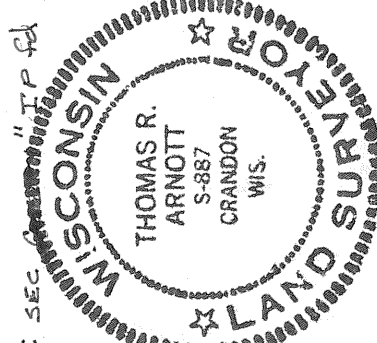
Witness corners were Higginbotham's 1 inch iron pipes. A plastic post (-) was set at the corner monument.



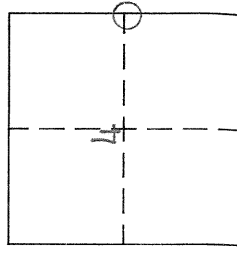
I, Thomas Arnott, certify that the corner location shown on this record was determined by me or under my direction and control and that this U.S. Public Land Survey Monument Record is correct and complete to the best of my knowledge and belief.

Thomas Arnott
Signature

13 Nov 1998
Date



INDEX No. C13



○ = Location of corner