

LANGLADE COUNTY U.S. PUBLIC LAND SURVEY MONUMENT LOCATION RECORD

4 104 0020

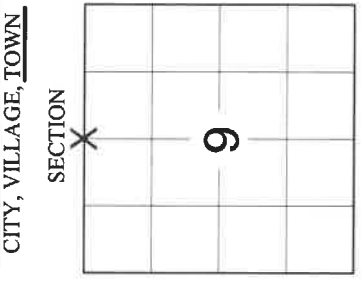
SECTION 9
TOWNSHIP 31 N
RANGE 14 E
WOLF RIVER
CITY, VILLAGE, TOWN

E11

NO.

FOUND SET
RESET RE-TIED

4311404 0020 2021

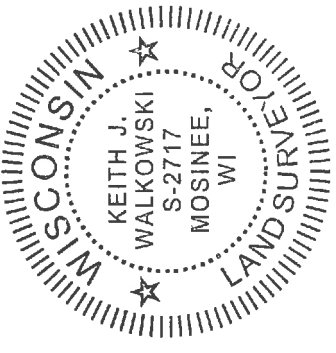


CORNER IDENTITY: SNM-1 STEEL NAIL MARKER
LANGLADE COUNTY COORDINATE: N: 358551.695
E: 723408.000
ELEVATION-(FEET): DATUM: NAD 83(2011)
WEATHER: SUNNY
DATE OF SURVEY: 7/27/2021 TEMPERATURE: 84 °F
SURVEY PARTY: CHRISTOPHER FIERI & COLLIN MARQUARDT

BASIS FOR MONUMENT LOCATION:

(DESCRIBE METHOD OF SURVEY AND CORNER AUTHENTICATION)

SEARCHED FOR THE NORTH 1/4 CORNER AND FOUND AN SMP NAIL SHAFT AT THE CORNER LOCATION. FOUND TWO 1-1/4" IRON PIPE WITNESS TIES TO THE NORTH WHICH MATCHES THE FOUND SHAFT WELL AND THE DISTANCE TO THE ADJACENT SECTION CORNER TO THE EAST. SET TWO NEW WITNESS TIES TO THE SOUTH AND SET A SNM-1 STEEL NAIL MARKER AT THE CORNER UPON COMPLETION OF THE S.T.H. "64" RESURFACING PROJECT. PERPETUATED THE CORNER LOCATION AS SHOWN BELOW.

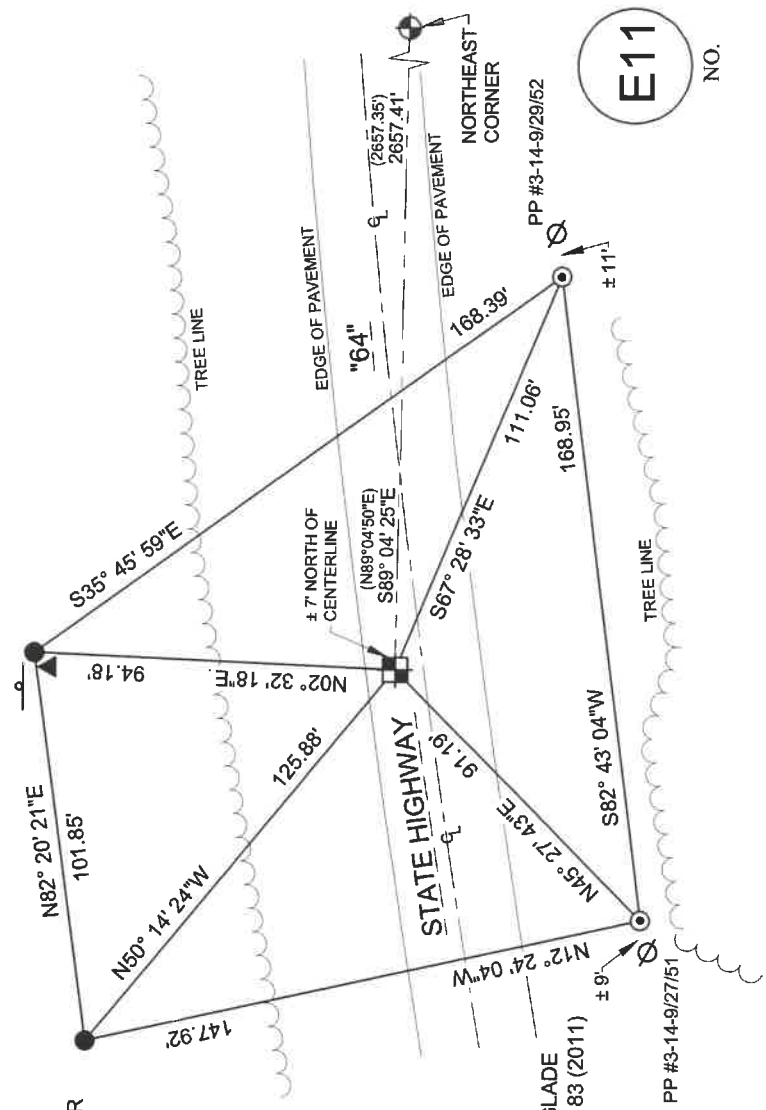


CERTIFIED CORRECT:
Keith J. Walkowski
KEITH J. WALKOWSKI S-2717
Registered L. and Surveyor
DATE: NOVEMBER 7TH, 2021

FIELD BOOK NO. NA PAGE NO. NA
COMPANY RIVERSIDE LAND SURVEYING LLC

TIE SKETCH:

- SET SNM-1 STEEL NAIL MARKER
- SET 3/4" x 18" IRON BAR
- FOUND 1-1/4" O.D. IRON PIPE
- EXISTING UTILITY POLE
- DNR SIGN
- FOUND RIGHT-OF-WAY POST



BEARINGS ARE BASED ON THE LANGLADE COUNTY COORDINATE SYSTEM NAD 83 (2011) AND REFERENCED AS SHOWN

THIS DRAWING IS NOT TO SCALE

E11

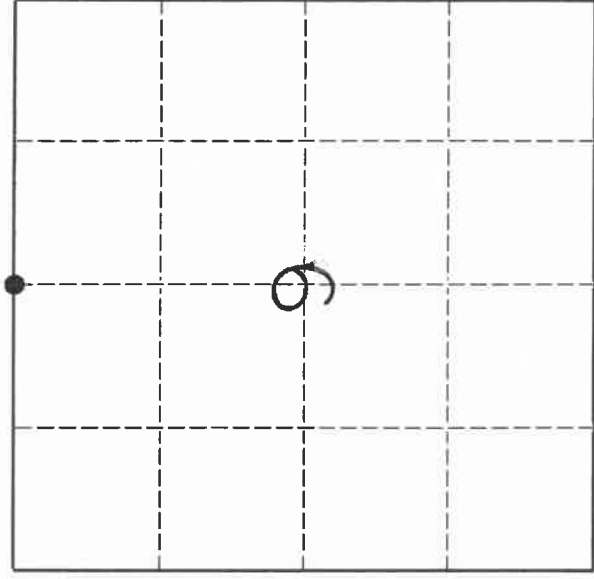
NO.

U. S. PUBLIC LAND SURVEY MONUMENT RECORD

I N S T R U C T I O N S:

This record shall show the location of the corner and shall include all of the following nine elements (a through i).

- (a) Identify the corner by reference to the U.S. public land survey system.
- O = Corner monument restored.



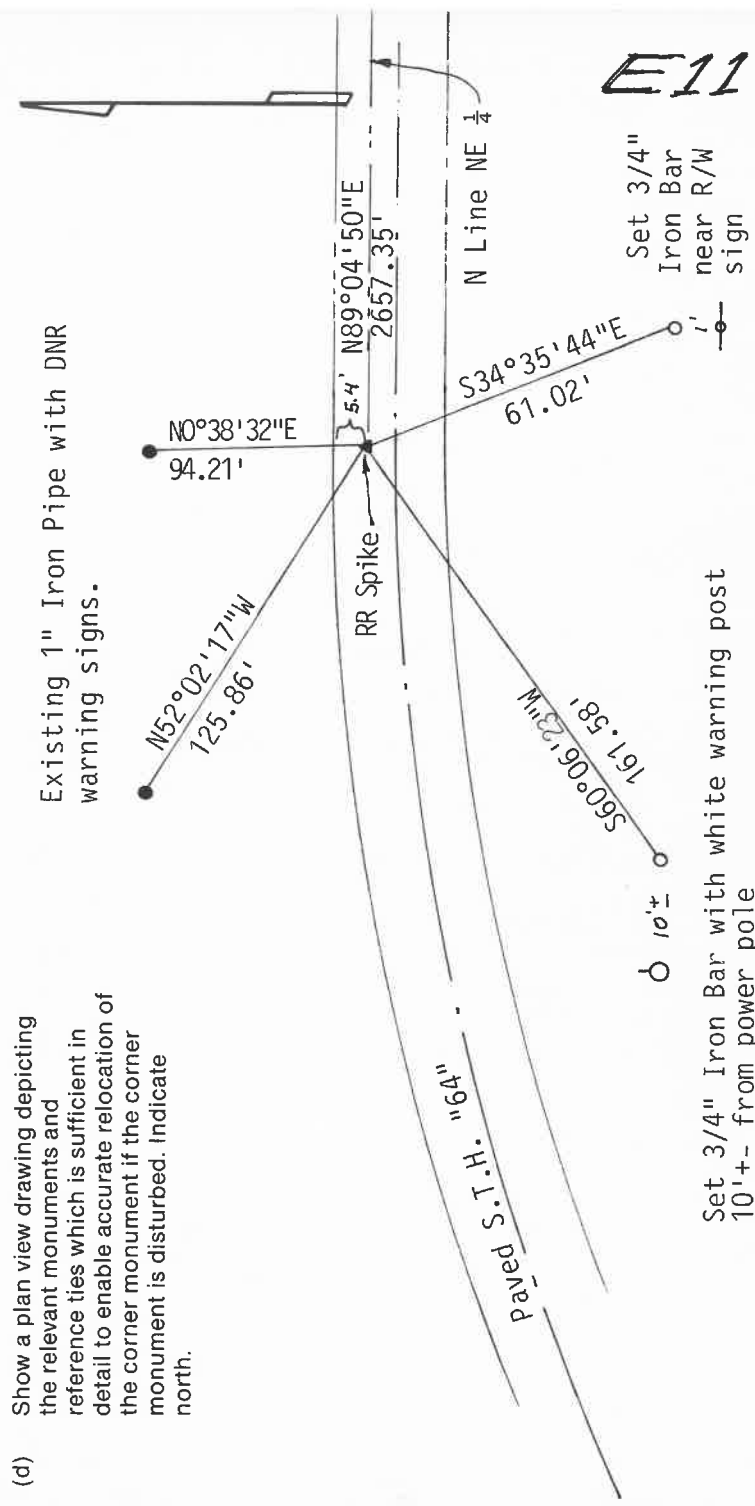
North $\frac{1}{4}$ Corner Section 9-31-14
Set Rail Road Spike in place of "PK"

- (b) Describe any record evidence, monument evidence, occupational evidence, testimonial evidence or any other material evidence you considered, and whether the monument was found or placed.

There are quite a few surveys tied to this corner and the South line of the SW $\frac{1}{4}$ of Section 4. I found 2 Iron pipe set for DNR Lands. Pulled distances as shown on map, found existing "PK" Nail. Pulled nail, got no magnetic reading. Held "PK" nail as best evidence of corner location. Set RailRoad Spike in "PK" hole, tied out.

- (c) In the plan view drawing below, provide reference ties to at least 4 witness monuments, or, if the location is within a municipality, to at least 2 witness monuments. (Witness monuments shall be made of concrete, natural stone, iron or other equally durable material.)
Describe witness monuments.

- (d) Show a plan view drawing depicting the relevant monuments and reference ties which is sufficient in detail to enable accurate relocation of the corner monument if the corner monument is disturbed. Indicate north.



Set 3/4" Iron Bar with white warning post
10'+- from power pole

Set 3/4" Iron Bar near R/W sign

E11

Describe any material discrepancy between the location of the corner as restored or reestablished and the location of that corner as previously restored or reestablished by distance and direction. Show the discrepancy on the plan view drawing under (d), above. Show the distances between the corner as previously restored or reestablished and (1) the corner as restored or reestablished, and (2) to at least 2 of the witness monuments shown on the drawing in (d), above.

Existing "PK" nail was almost rusted off. Had been there a long time. It matched existing Irons. Feel confident this is the corner used by other surveyors.

(f) Was the corner restored through acceptance of (1) an obliterated evidence location, or, (2) a found perpetuated location?
2

(g & h) Was the corner reestablished through lost corner proportionate methods? If so, show the method, including the directions and distances to other public land survey corners used as evidence or used for proportioning in determining the corner location.

NO

(i) I, David L. Osterbrink, RLS No. S-2014
(type or print name)

certify that the corner location shown on this record was determined by me or under my direction and control and that this U.S. Public Land Survey Monument Record is correct and complete to the best of my knowledge and belief.

David L. Osterbrink
Signature

6-3-94
Date

