

LANGLADE COUNTY U.S. PUBLIC LAND SURVEY MONUMENT LOCATION RECORD

11403 0000

E17

SECTION 2
TOWNSHIP 31 N
RANGE 14 E
WOLF RIVER
CITY, VILLAGE, TOWN

NO.

FOUND SET
RESET RE-TIED

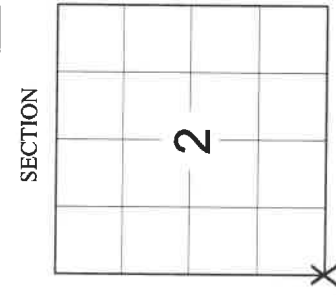
LANDMARK BENCHMARK
CORNER IDENTITY: SNM-1 STEEL NAIL MARKER

LANGLADE COUNTY COORDINATE: N: 358652.368
E: 731378.285
DATUM: NAD 83(2011)

WEATHER: SUNNY
DATE OF SURVEY: 7/27/2021 TEMPERATURE: 84 °F

SURVEY PARTY: CHRISTOPHER FIERI & COLLIN MARQUARDT

4311403 0000 2021

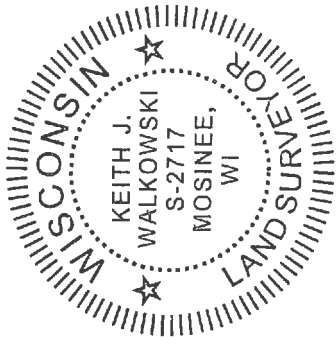


LOCATION
(Indicated By X)

BASIS FOR MONUMENT LOCATION:

(DESCRIBE METHOD OF SURVEY AND CORNER AUTHENTICATION)

SEARCHED FOR THE SOUTHWEST CORNER OF SECTION 2 AND FOUND A MAG NAIL AT THE CORNER LOCATION AND ALL 4 TIES AS SHOWN ON THE RECORD TIE SHEET BY DAVID TLUSTY DATED 7-22-1999. ALL TIES WERE IN GOOD CONDITION EXCEPT THE TIE TO THE SOUTHWEST WAS FOUND BENT. RESET A NEW 3/4" IRON BAR IN THE EXISTING HOLE. SET A SNM-1 STEEL NAIL MARKER AT THE CORNER LOCATION UPON COMPLETION OF THE S.T.H. "64" RESURFACING PROJECT. PERPETUATED THE CORNER LOCATION AS SHOWN BELOW.



CERTIFIED CORRECT:

Keith J. Walkowski

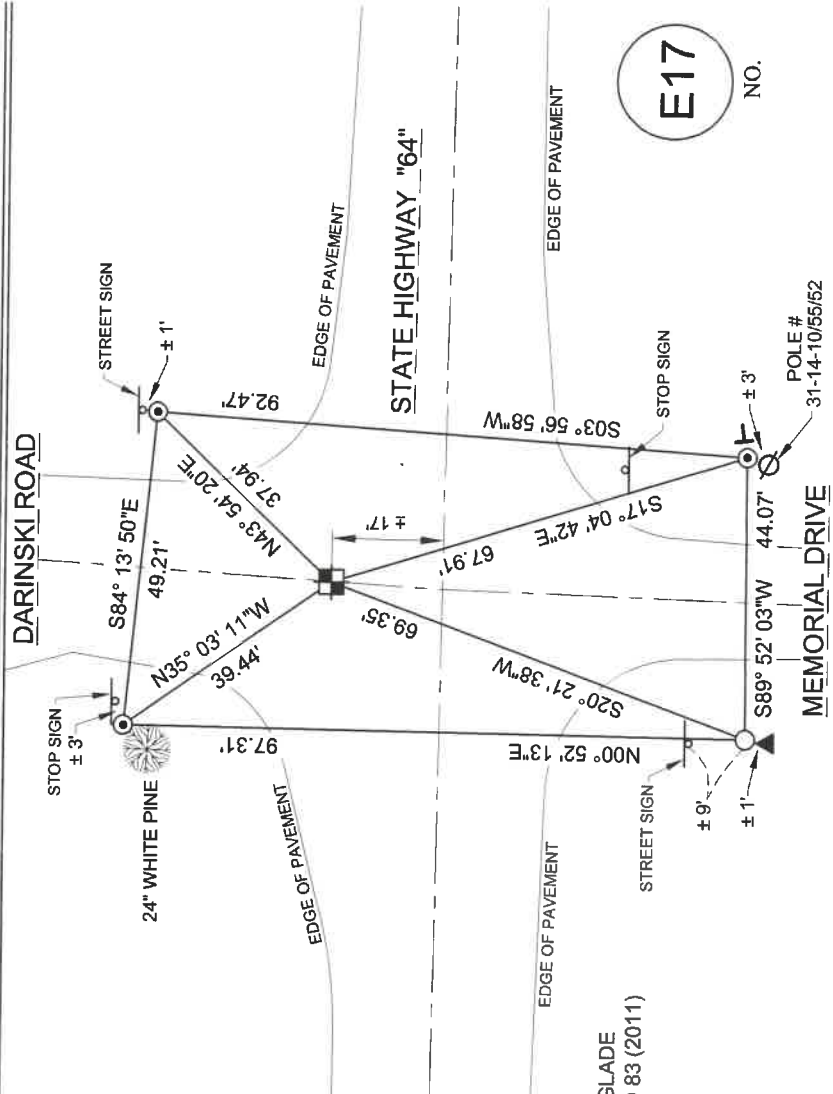
KEITH J. WALKOWSKI S-2717
Registered Land Surveyor

DATE: NOVEMBER 7TH, 2021

FIELD BOOK NO. NA PAGE NO. NA
COMPANY RIVERSIDE LAND SURVEYING LLC

TIE SKETCH:

- SET SNM-1 STEEL NAIL MARKER
- SET 3/4" x 18" IRON BAR
- FOUND 3/4" IRON BAR WITH CAP
- EXISTING UTILITY POLE
- EXISTING SIGN
- FOUND STEEL CHANNEL
- FOUND RIGHT-OF-WAY SIGN



BEARINGS ARE BASED ON THE LANGLADE
COUNTY COORDINATE SYSTEM NAD 83 (2011)
AND REFERENCED AS SHOWN

THIS DRAWING IS NOT TO SCALE

E17

NO.

U.S. PUBLIC LAND SURVEY MONUMENT RECORD

(Prepared and as required by S. A-E 7.08 WI Administrative Code)

The SOUTHWEST corner of Section 2, T. 31 N., R. 14 E., Langlade County, WI

Corner was: (check all that apply)

- Restored through acceptance of an obliterated evidence location.
- Restored through acceptance of a found perpetuated location.
- Determined to be lost and re-established through proportionate methods.
(Show bearings and distances to PLSS corners used for proportioning.)
- Restored/recovered/reestablished in a location that differs from a previously established position. (Show difference in plan view below.)

3114030000

- Check here if additional information is shown on the reverse side of this form.

Describe record evidence, recovered physical evidence, occupational evidence, testimonial evidence and all other evidence considered in the recovery/restoration of the corner.

The original corner was established in 1857 by James McBride. Original bearing trees: a birch, 12", S52°E, 45 links; a sugar, 12", S60°W, 5 links; a sugar, 10", N37°W, 35 links, and a hemlock, 15", N21°E, 33 links. Hutchinson, in 1916, described the corner as "Stone in road set by Dorr". In 1975, Tom Arnott set a RR spike for this corner by extending a line from the E1/4 cor. of Sec. 10, north thru an iron pin fnd. at the assumed 1/16 corner. Corner fell in the middle of the south lane of STH "64". 07/21/99 D. Tlusty, D. Williams, M. Klimoski, M. Steckbauer dug for corner with backhoe. Approx. 18' N of the center of STH "64", found approx. 10" x 12" x 18" stone with chisled "X" on top. Accepted stone as the best evidence of the original corner location. The distance from the stone to the recovered stone the E1/4 corner of section 3 is within 5 feet of Hutchinsons dist. and the distance from the stone to the E1/4 corner of Section 10 is within 0.5' of a Hutchinson distance in FB149-25.

Physical description of the monument set:

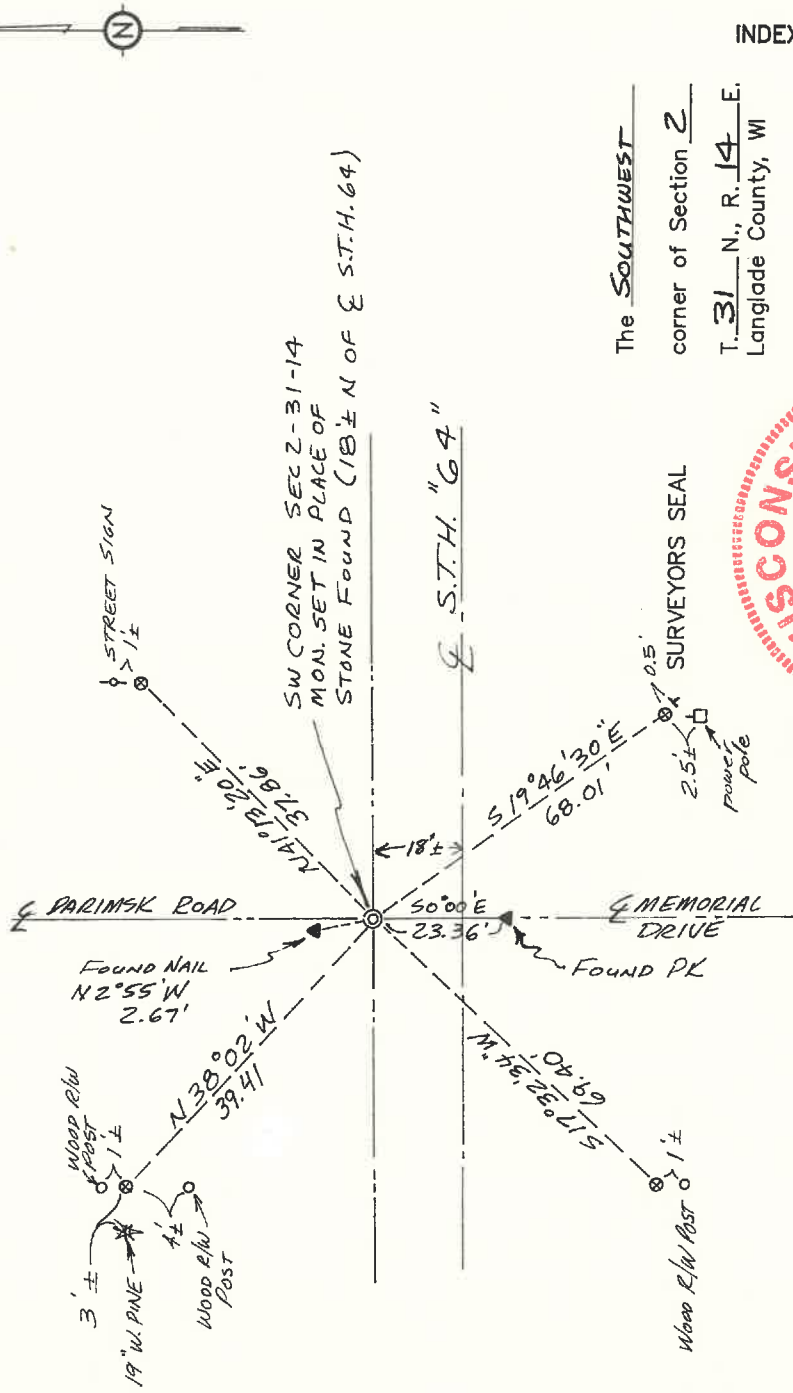
For the corner, I removed the stone and replaced it with a 2" x 30" galvanized, flared bottom iron pipe with 3 1/4" brass cap, top of which is 0.8' below road surface. Laid the found stone alongside the new monument set.

Describe the accessories used to perpetuate the location of the corner. Include a plan view drawing and indicate accessories found/set. Describe measuring point on bearing trees. Show any topographic features that would aid in future recovery of the corner.

⊗ = 3/4" x 30" rebar with red plastic cap set flush with ground
 ▲ = white vinyl sign post set

Bearings referenced to assumed direction of S 0°00' W to Tom Arnott PK found

Notes FB17-20



The SOUTHWEST
 corner of Section 2
 T. 31 N., R. 14 E.
 Langlade County, WI

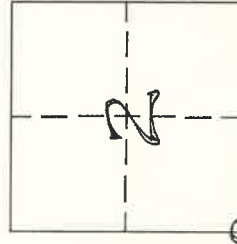


I, DAVID E. TLUSTY, LANGLADE COUNTY SURVEYOR, certify that the corner location shown on this record was determined by me or under my direction and control and that this U.S. Public Land Survey Monument Record is correct and complete to the best of my knowledge and belief.

David E. Tlusty
 Signature

Date

INDEX No. E17



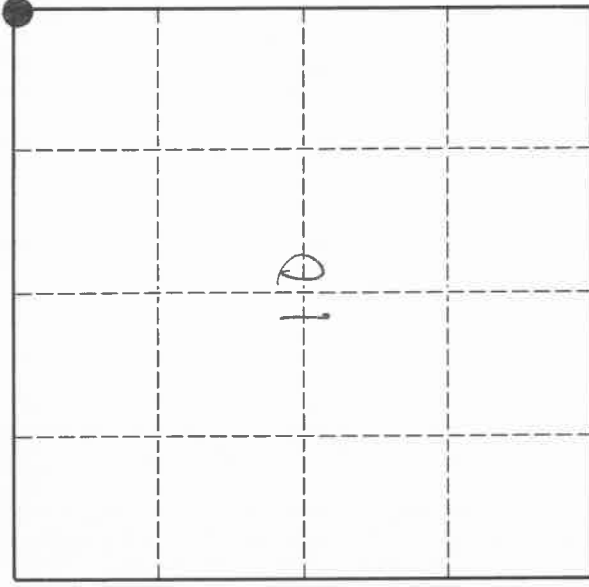
○ = Location of corner

U. S. PUBLIC LAND SURVEY MONUMENT RECORD

I N S T R U C T I O N S:

This record shall show the location of the corner and shall include all of the following nine elements (a through i).

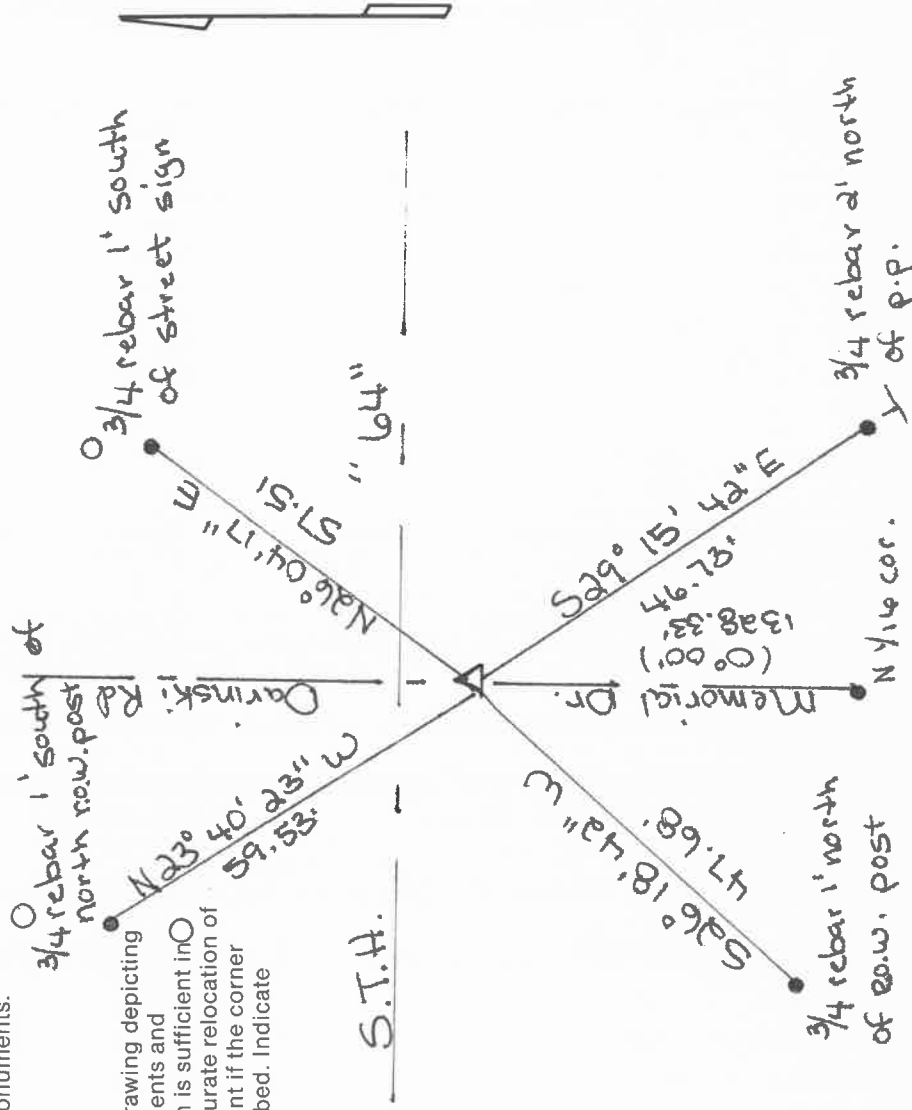
- (a) Identify the corner by reference to the U.S. public land survey system.
O = Corner monument restored.
SEC. COR. 2,3,10,11
T31N, R14E



- (b) Describe any record evidence, monument evidence, occupational evidence, testimonial evidence or any other material evidence you considered, and whether the monument was found or placed.

No evidence found. I doubled the distance and set on line from the 1/4 cor. 10,11 to the N 1/16 cor. Cor fell in the middle of the south lane of S.T.H. "64". We found an iron pin at the N 1/16 cor. A R.R. spike was set at the sec.cor. At present, it is under 5" of blacktop. The R.R. spike was set in 1975 when we did the assessor's plat for the town of Wolf River.

- (c) In the plan view drawing below, provide reference ties to at least 4 witness monuments, or, if the location is within a municipality, to at least 2 witness monuments. (Witness monuments shall be made of concrete, natural stone, iron or other equally durable material.)
Describe witness monuments.



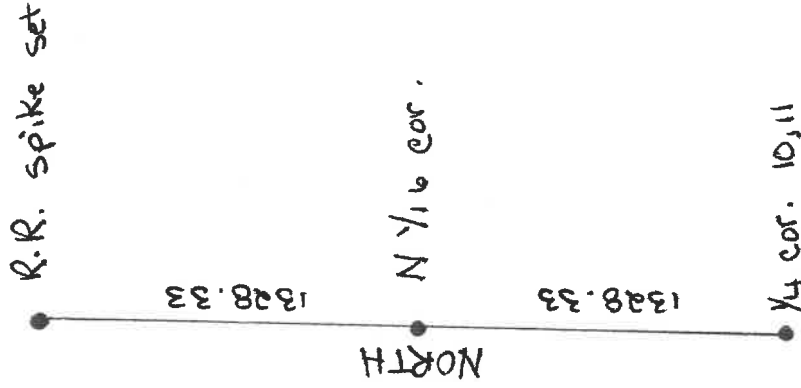
Describe any material discrepancy between the location of the corner as restored or reestablished and the location of that corner as previously restored or reestablished by distance and direction. Show the discrepancy on the plan view drawing under (d), above. Show the distances between the corner as previously restored or reestablished and (1) the corner as restored or reestablished, and (2) to at least 2 of the witness monuments shown on the drawing in (d), above.

none

- (f) Was the corner restored through acceptance of (1) an obliterated evidence location, or, (2) a found perpetuated location?
no.1

(g & h) Was the corner reestablished through lost corner proportionate methods? If so, show the method, including the directions and distances to other public land survey corners used as evidence or used for proportioning in determining the corner location.

Corner was relocated by doubling the distance from the 1/4 cor. 10,11 to the N 1/16 corner and on the same line.



Thomas R. Arnott S-887

(i) I, _____
(type or print name)

certify that the corner location shown on this record was determined by me or under my direction and control and that this U.S. Public Land Survey Monument Record is correct and complete to the best of my knowledge and belief.


Signature

13 Aug 93
Date

