

# LANGLADE COUNTY U.S. PUBLIC LAND SURVEY MONUMENT LOCATION RECORD

43, 2 0020

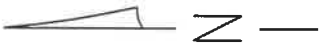
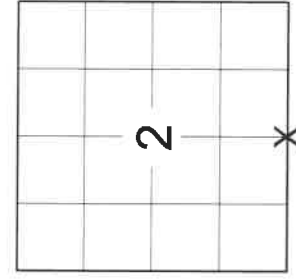
SECTION 2  
TOWNSHIP 31 N  
RANGE 14 E

**E19**

NO.

WOLF RIVER  
CITY, VILLAGE, TOWN

SECTION



4311402 0020 2021

LOCATION  
(Indicated By X)

FOUND   
SET   
RESET   
RE-TIED

LANDMARK  BENCHMARK \_\_\_\_\_  
CORNER IDENTITY: SNM-1 STEEL NAIL MARKER

LANGLADE COUNTY COORDINATE: N: 358579.943  
E: 734007.400

ELEVATION-(FEET): \_\_\_\_\_ DATUM: NAD 83(2011)

WEATHER: SUNNY

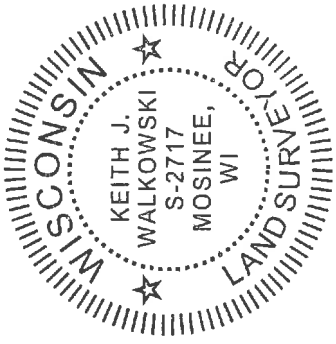
DATE OF SURVEY: 7/27/2021 TEMPERATURE: 84 °F

SURVEY PARTY: CHRISTOPHER FIERI & COLLIN MARQUARDT

## BASIS FOR MONUMENT LOCATION:

(DESCRIBE METHOD OF SURVEY AND CORNER AUTHENTICATION)

SEARCHED FOR THE SOUTH 1/4 CORNER OF SECTION 2 AND FOUND A MAG NAIL AT THE CORNER LOCATION AND THREE OF THE EXISTING WITNESS TIES WHICH CHECKED WELL AS SHOWN ON THE RECORD TIE SHEET BY DANIEL HIGGINBOTHAM DATED 2-27-2003. SET A NEW WITNESS TIE TO THE SOUTHEAST. SET A SNM-1 STEEL NAIL MARKER AT THE CORNER LOCATION UPON COMPLETION OF THE S.T.H. "64" RESURFACING PROJECT AND PERPETUATED THE CORNER LOCATION AS SHOWN BELOW.



CERTIFIED CORRECT:

*Keith J. Walkowski*

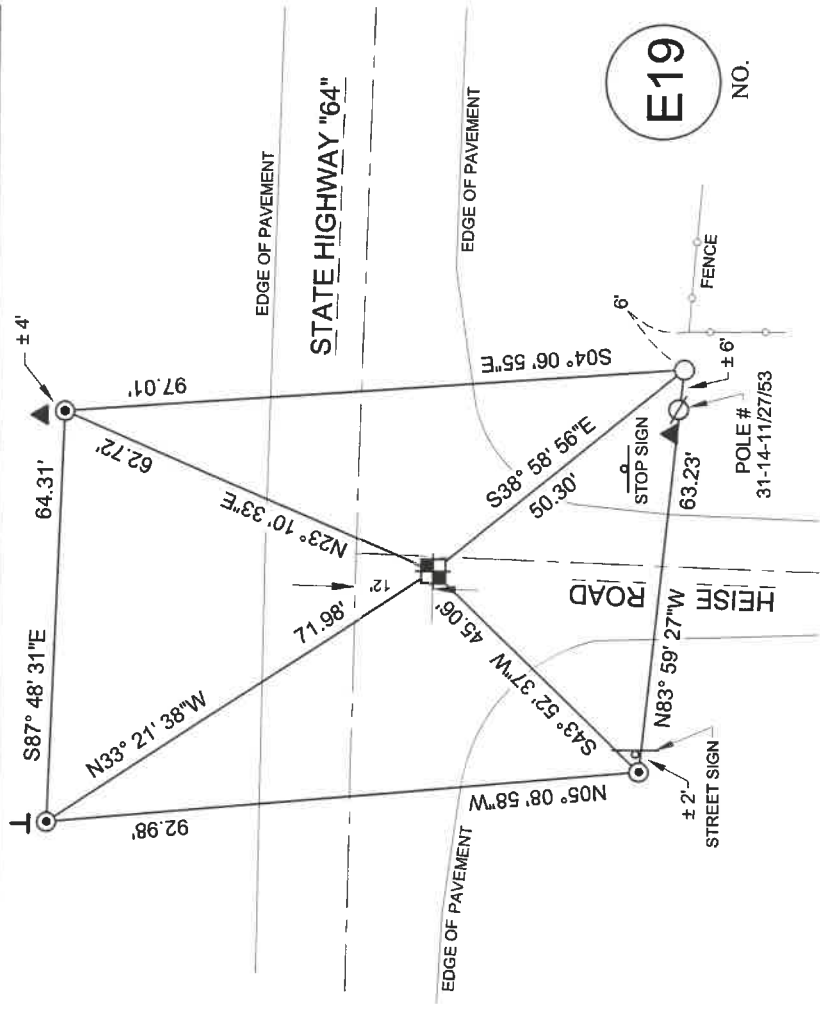
KEITH J. WALKOWSKI S-2717  
Registered Land Surveyor

DATE: NOVEMBER 7TH, 2021

FIELD BOOK NO. NA PAGE NO. NA  
COMPANY RIVERSIDE LAND SURVEYING LLC

## TIE SKETCH:

- SET SNM-1 STEEL NAIL MARKER
- SET 3/4" x 18" IRON BAR
- FOUND 3/4" IRON BAR
- EXISTING UTILITY POLE
- SIGN
- FOUND RIGHT-OF-WAY POST
- FOUND VINYL T POST



BEARINGS ARE BASED ON THE LANGLADE COUNTY COORDINATE SYSTEM NAD 83 (2011) AND REFERENCED AS SHOWN

THIS DRAWING IS NOT TO SCALE

**E19**

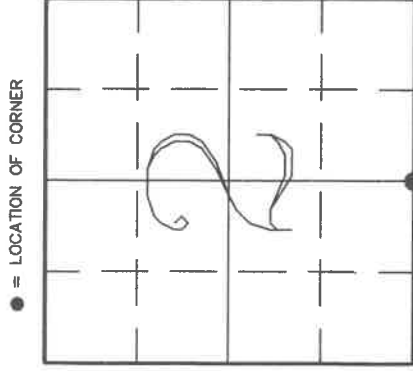
NO.

# U.S. PUBLIC LAND SURVEY MONUMENT RECORD

43114020020

**HISTORY OF ORIGINAL CORNER ESTABLISHMENT AND SUBSEQUENT RESTORATION AND DESCRIPTION OF ANY RECORD, MONUMENT OCCUPATIONAL, TESTIMONIAL OR OTHER EVIDENCE CONSIDERED:**

The original 1/4 corner was established in 1857 by James McBride. Original BT's: Hemlock 18" N3W 36lks., Birch 14" (no bearing or distance given). In 1903, Webley ran the South line of Sec 2 with a total distance of 5233.80' setting a "1/4 line stake" at midpoint on line with a BT: 3" Popple N29W 56lks. In 1916, Hutchinson ran the South line of Sec 2 with a total distance of 5254.92' setting "1/4 post equal distance from corners Gas pipe 1 1/2" x 3ft." On 2/5/98, Gerry Bahar and Don Buza computed the location for the S 1/4 from a 1947 State Hwy R/W Map (#20156 in Langlade Co Surveyor's Office) which states the "C.L. +/- 10' N. of 1/4 Cor." This location fits within 0.5' of the extension of a 40'/c with a witness pipe 1/4 mile South and the C1/4 of Sec 11. It also fits within 1.5' of Hutchinson's distances in 1916. We accepted this location for the S 1/4, set a SMP Nail and tied out.

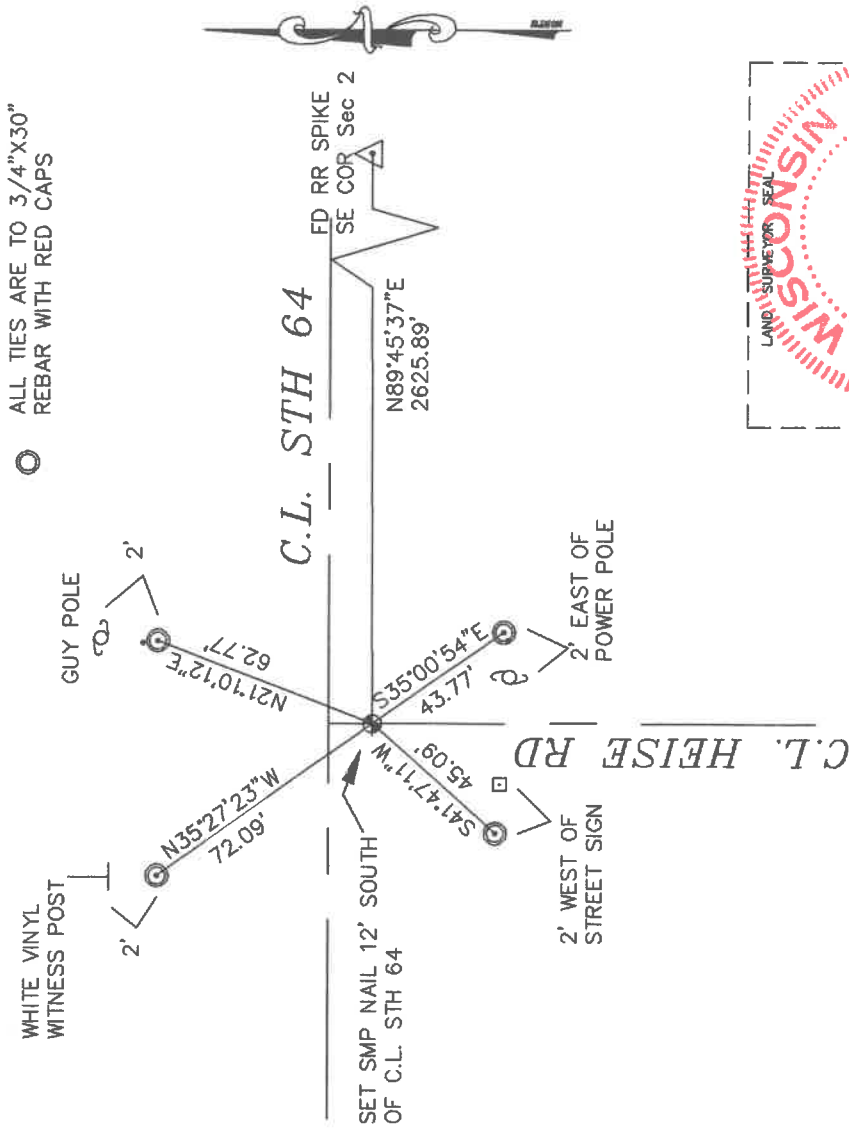


SECTION 2  
TOWNSHIP 31 NORTH, RANGE 14 EAST  
TOWN OF WOLF RIVER  
LANGLADE COUNTY, WISCONSIN

**CORNER WAS: (CHECK ALL THAT APPLY)**

- RESTORED THROUGH ACCEPTANCE OF AN OBLITERATED EVIDENCE LOCATION
- RESTORED THROUGH ACCEPTANCE OF A FOUND PERPETUATED LOCATION
- CONSIDERED A LOST CORNER AND REESTABLISHED THROUGH LOST CORNER PROPORTIONATE METHODS (INCLUDE A PLAN VIEW DRAWING SHOWING DISTANCES AND DIRECTIONS TO OTHER PUBLIC LAND SURVEY CORNERS USED FOR PROPORTIONING AND DETERMINING THE CORNER LOCATION)
- RESTORED OR REESTABLISHED IN A LOCATION THAT DIFFERS FROM A PREVIOUS RESTORATION OR REESTABLISHMENT (INCLUDE A PLAN VIEW DRAWING AND INDICATE WHAT WAS SET AND/OR FOUND)
- CHECK IF THERE IS ADDITIONAL INFORMATION ON BACK

**DESCRIBE THE MONUMENT AND ACCESSORIES USED TO PERPETUATE THE LOCATION OF THE CORNER. (INCLUDE A PLAN VIEW DRAWING AND INDICATE WHAT WAS SET AND/OR FOUND) ALSO INCLUDE FOUR TIES TO THE SECTION CORNER AND DESCRIPTION OF THE TIES.**



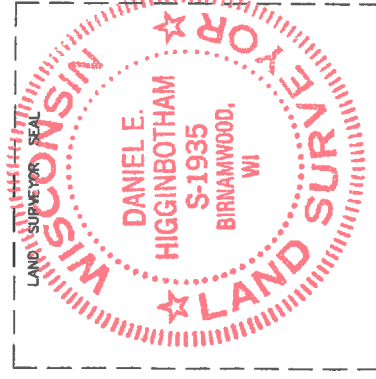
**DANIEL E. HIGGINBOTHAM**

(Type or print name) CERTIFY THAT THE CORNER LOCATION SHOWN ON THIS RECORD WAS DETERMINED BY ME OR UNDER MY DIRECTION AND CONTROL AND THAT THIS U.S. PUBLIC LAND SURVEY MONUMENT RECORD IS CORRECT AND COMPLETE TO THE BEST OF MY KNOWLEDGE AND BELIEF.

*Daniel E. Higginbotham*  
SIGNATURE

2/27/03

DATE



E-19  
31-14

INDEX NO.