

LANGLADE COUNTY U.S. PUBLIC LAND SURVEY MONUMENT LOCATION RECORD

1402 0000

SECTION 12
TOWNSHIP 31 N
RANGE 14 E

E21

NO.

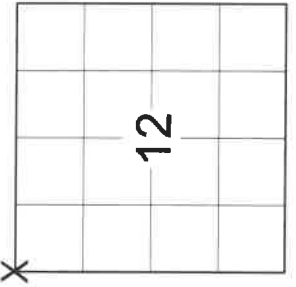
LANDMARK BENCHMARK FOUND SET RESET RE-TIED

WOLF RIVER

1202 0000 2011/11/11

CITY, VILLAGE, TOWN

SECTION



LANGLADE COUNTY COORDINATE: N: 358496.244
E: 736630.887
ELEVATION-(FEET): _____ DATUM: NAD 83 (2011)
WEATHER: SUNNY
DATE OF SURVEY: 7/27/2021 TEMPERATURE: 84 °F
SURVEY PARTY: CHRISTOPHER FIERI / COLLIN MARQUARDT

BASIS FOR MONUMENT LOCATION:

(DESCRIBE METHOD OF SURVEY AND CORNER AUTHENTICATION)

SEARCHED FOR THE NORTHWEST CORNER OF SECTION 12 AND FOUND THE CALLED FOR RAILROAD SPIKE AND TWO TIES AS SHOWN ON THE RECORD TIE SHEET DATED 3-11-1983 BY WILLIAM KELLY. ACCEPTED THE FOUND RAILROAD SPIKE AS THE CORNER AND SET A SNM-1 STEEL NAIL MARKER AT THE CORNER LOCATION UPON COMPLETION OF THE S.T.H. "64" RESURFACING PROJECT. ADDED ADDITIONAL TIES TO PERPETUATE THE CORNER LOCATION AS SHOWN BELOW.

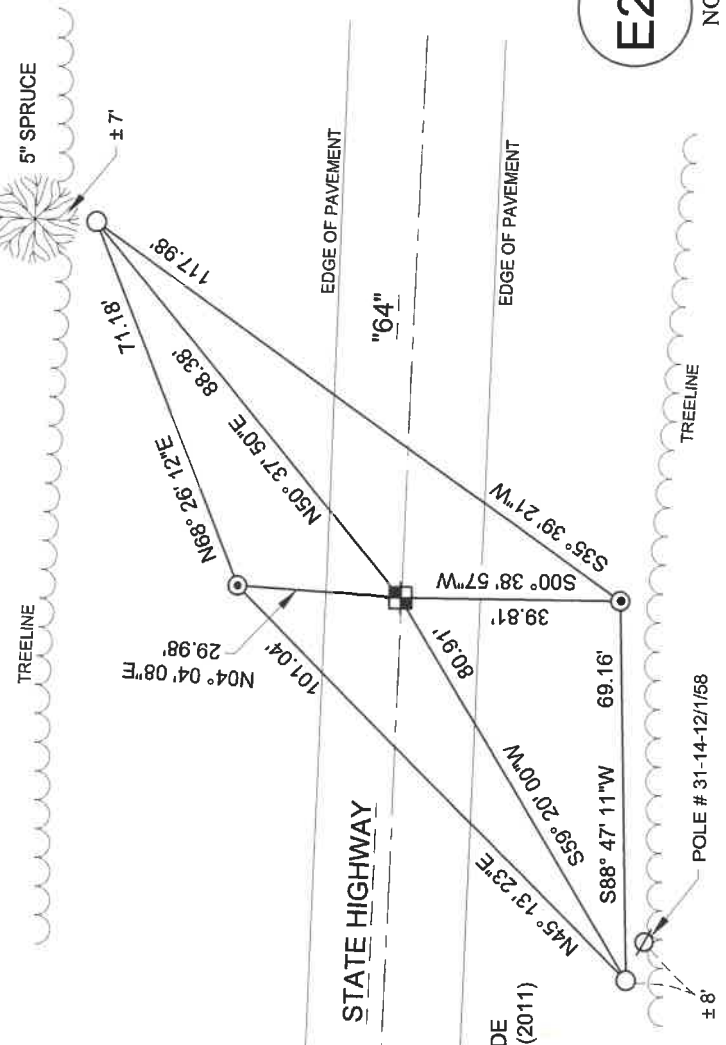


CERTIFIED CORRECT: *Keith J. Walkowski*
KEITH J. WALKOWSKI S-2717
Registered Land Surveyor
DATE: NOVEMBER 7TH, 2021

FIELD BOOK NO. NA PAGE NO. NA
COMPANY RIVERSIDE LAND SURVEYING LLC

TIE SKETCH:

- SET SNM-1 STEEL NAIL MARKER
- SET 3/4" x 18" IRON BAR
- FOUND 2" O.D. IRON PIPE WITH ALUMINUM CAP
- EXISTING UTILITY POLE



BEARINGS ARE BASED ON THE LANGLADE COUNTY COORDINATE SYSTEM NAD 83 (2011) AND REFERENCED AS SHOWN

THIS DRAWING IS NOT TO SCALE

E21

NO.

CERTIFIED LAND CORNER RESTORATION

Index No. E-21

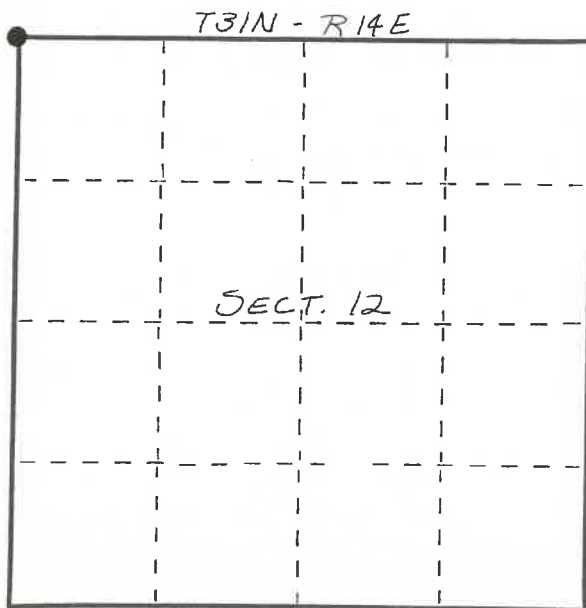
State of Wisconsin }
County of LANGLADE } ss.

I WILLIAM F. KELLY, do hereby certify that on the 11th day of MARCH, 1983, I found evidence of the NW corner of SECTION 12 Township 31, North, Range 14 EAST, Fourth Principal Meridian, as described hereon; and that from this evidence I established a new monument and accessories as described hereon to perpetuate the original location of this corner.

Resident witnesses:

.....
.....
.....

FORM 985 H. E. MILLER CO., MILWAUKEE



○ = Corner monument restored.

History of original corner establishment:
ORIGINAL CORNER ESTABLISHED
BY JAMES McBRIDE IN 1857

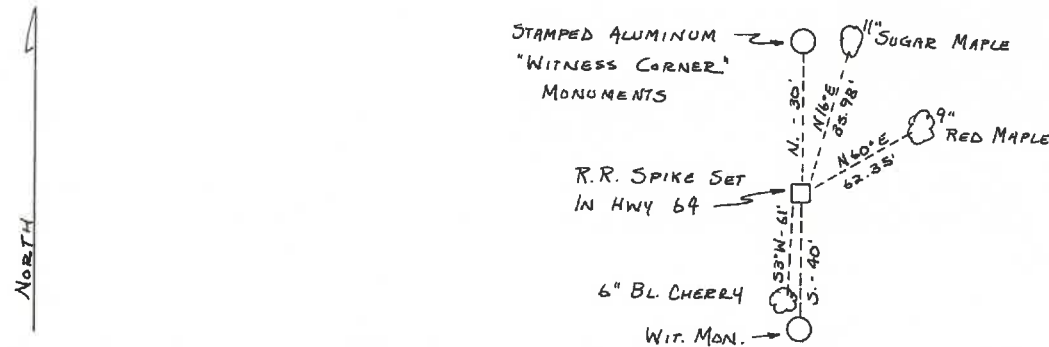
Description of corner evidence found:

CORNER ESTABLISHED FROM INFORMATION
ON DIV. OF HIGHWAYS R/W PLAT DATED
1/15/47 FOR PROJECT TD19(2). SET
R.R. SPIKE & WITNESS MONUMENTS.
Work Done By John Fisher
in Oct 1982



William F. Kelly

Description of monument and accessories I established to perpetuate the original location of this corner.



Dated at ELCHO, Wis., this 11th day of MARCH, 1983

Signature William F. Kelly Title COUNTY SURVEYOR Registration No. 1098
(County Surveyor, Registered Land Surveyor, or other duly authorized official)

Office of Register of Deeds, County of....., I hereby certify that the within instrument was filed in this office for record on the..... day of....., 19..... at..... o'clock..... M.

(Register of Deeds)

By..... Deputy