

CERTIFIED LAND CORNER RESTORATION

Index No. E-23

State of Wisconsin }  
 County of LANGLADE } ss.

I WILLIAM F. KELLY, do hereby certify that on the 11<sup>th</sup> day of MARCH, 1983, I found evidence of the 5. 14 corner of SECTION 1 Township 31, North, Range 14 EAST, Fourth Principal Meridian, as described hereon; and that from this evidence I established a new monument and accessories as described hereon to perpetuate the original location of this corner.

Resident witnesses:

.....

.....

.....

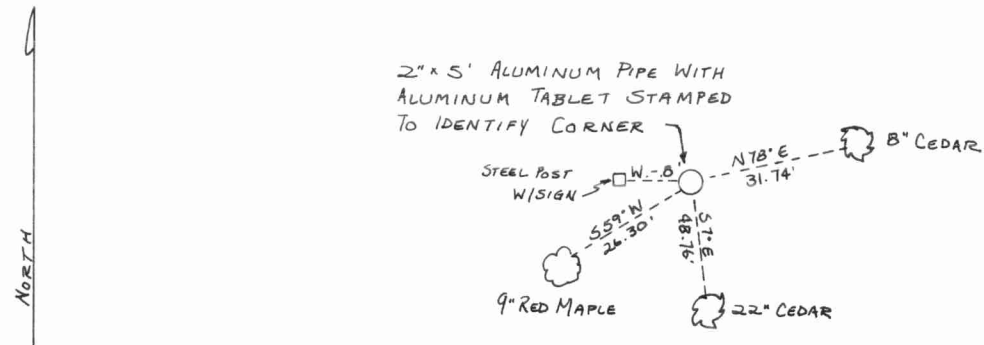
History of original corner establishment:  
ORIGINAL CORNER ESTABLISHED BY  
JAMES McBRIDE IN 1857.

Description of corner evidence found:  
FOUND TIP OF OLD SCRIBED POST;  
ROOTS OF ORIGINAL TAMARACK BT;  
DOWNED CEDER TREE FITTING ORIGINAL  
LOCATION OF N3°E, 24' BUT HAS NO  
SCRIBING REMAINING. REPLACED TIP  
OF POST WITH 2" x 5' ALUM. PIPE MONUMENT.  
ABOVE WORK BY JOHN FISHER OCT 1982

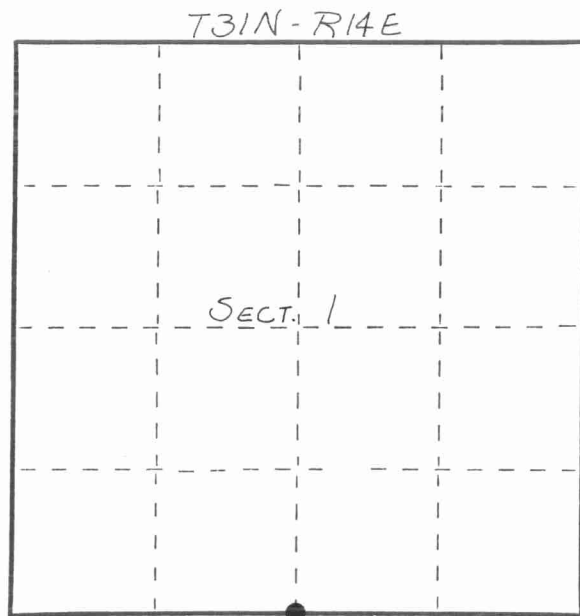


*William F. Kelly*

Description of monument and accessories I established to perpetuate the original location of this corner.



FORM 985 H. C. MILLER CO., MILWAUKEE



○ = Corner monument restored.

Dated at ELCHO, Wis., this 11<sup>th</sup> day of MARCH, 1983.

Signature William F. Kelly Title COUNTY SURVEYOR Registration No. 1098  
 (County Surveyor, Registered Land Surveyor, or other duly authorized official)

Office of Register of Deeds, County of \_\_\_\_\_, I hereby certify that the within instrument was filed in this office for record on the \_\_\_\_\_ day of \_\_\_\_\_, 19\_\_\_\_ at \_\_\_\_\_ o'clock \_\_\_\_\_ M.

.....  
 (Register of Deeds)

By \_\_\_\_\_ Deputy

