

CERTIFIED LAND CORNER RESTORATION

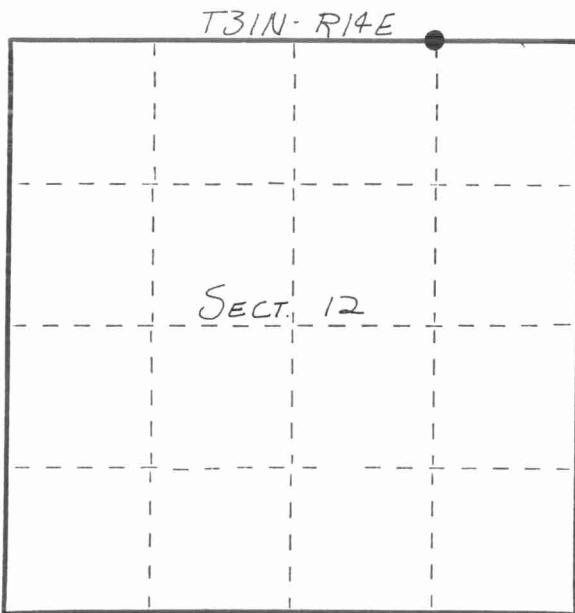
Index No. E-24

State of Wisconsin }
County of LANGLADE } ss.

I, WILLIAM F. KELLY, do hereby certify that on the 14th day of MARCH, 19 83, I found evidence of the E. 1/2 corner of DN. N. LINE, SECT. 12 Township 31, North, Range 14 EAST, Fourth Principal Meridian, as described hereon; and that from this evidence I established a new monument and accessories as described hereon to perpetuate the original location of this corner.

Resident witnesses:

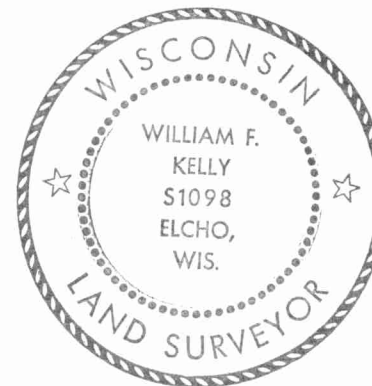
.....
.....
.....



○ = Corner monument restored.

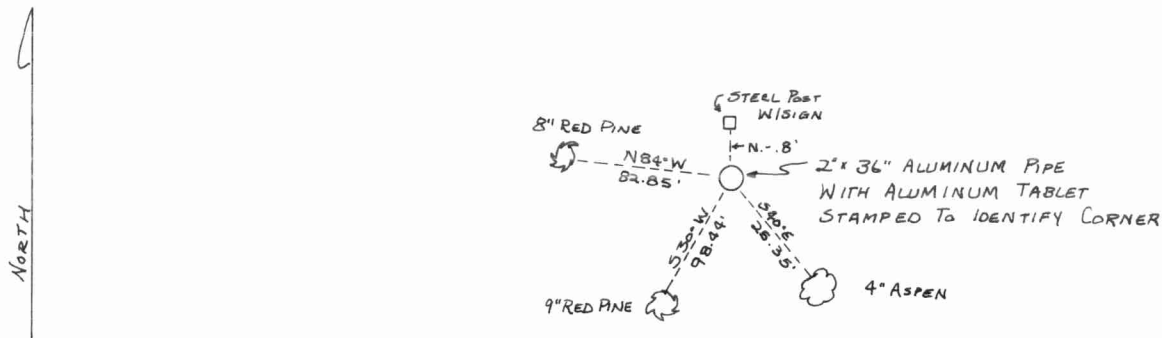
History of original corner establishment:
CORNER NOT ESTABLISHED DURING ORIGINAL GOVT SURVEY.

Description of corner evidence found:
CORNER SET ON LINE AT MIDPOINT BETWEEN N. 1/4 COR. & NE SECT. COR. OF SECT. 12. SET 2"x36" ALUM. MONUMENT. WORK DONE BY JOHN FISHER IN OCT 1982



William F. Kelly

Description of monument and accessories I established to perpetuate the original location of this corner.



Dated at ELCHO, Wis., this 14th day of MARCH, 19 83.

Signature William F. Kelly Title COUNTY SURVEYOR Registration No. 1098
(County Surveyor, Registered Land Surveyor, or other duly authorized official)

Office of Register of Deeds, County of _____, I hereby certify that the within instrument was filed in this office for record on the _____ day of _____, 19 _____ at _____ o'clock _____ M.

.....
(Register of Deeds)

By _____ Deputy

