

4311335 0020 2018

# U.S. PUBLIC LAND SURVEY MONUMENT RECORD

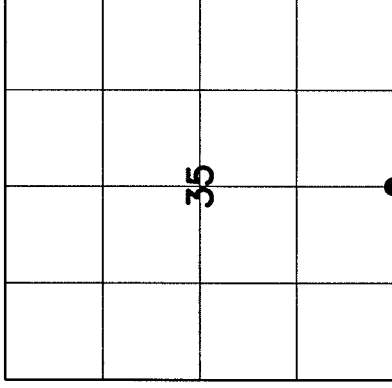
HISTORY OF ORIGINAL CORNER ESTABLISHMENT AND SUBSEQUENT RESTORATION AND DESCRIPTION OF ANY RECORD, MONUMENT OCCUPATIONAL, TESTIMONIAL OR OTHER EVIDENCE CONSIDERED:

THE ORIGINAL CORNER WAS SET BY ALFRED MILLARD IN JUNE 1857. THE ORIGINAL BEARING TREES WERE:

- BIRCH 8" N38°E 43 LINKS
- BIRCH 14" N14°E 66 LINKS
- MAPLE 16" N52°W 47 LINKS
- MAPLE 18" N72°W 37 LINKS

1933—GLO SET A 1.5" PIPE WITH BRASS CAP MONUMENT  
 2017—I FOUND THE GLO MONUMENT AND SET TIES AS SHOWN

● = LOCATION OF CORNER

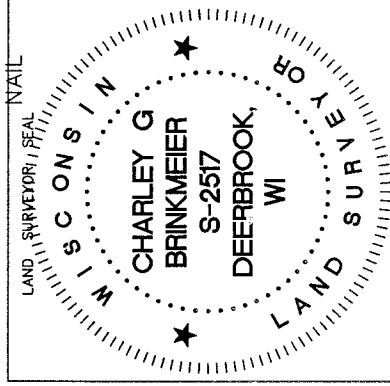
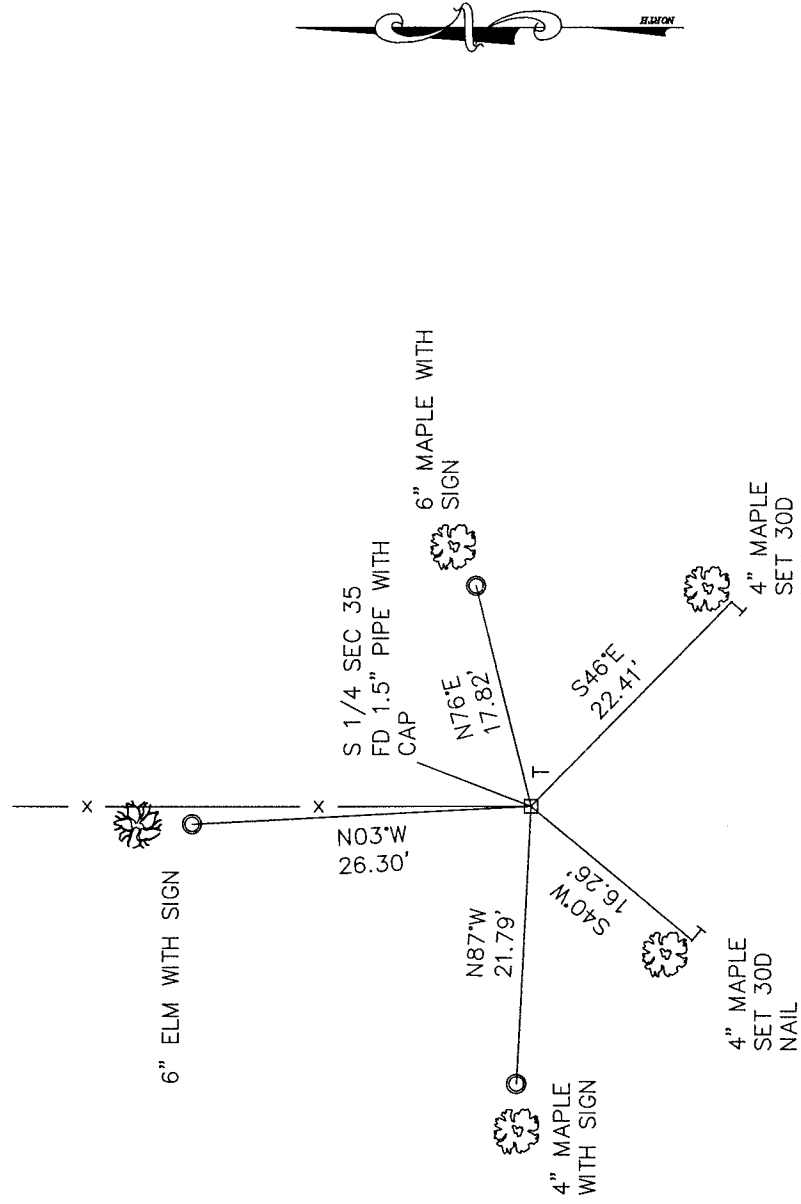


SECTION 35  
 TOWNSHIP 31 NORTH, RANGE 13 EAST  
 TOWN OF EVERGREEN  
 LANGLADE COUNTY, WISCONSIN

CORNER WAS: (CHECK ALL THAT APPLY)

- RESTORED THROUGH ACCEPTANCE OF AN OBLITERATED EVIDENCE LOCATION
- RESTORED THROUGH ACCEPTANCE OF A FOUND PERPETUATED LOCATION
- CONSIDERED A LOST CORNER AND REESTABLISHED THROUGH LOST CORNER PROPORTIONATE METHODS (INCLUDE A PLAN VIEW DRAWING SHOWING DISTANCES AND DIRECTIONS TO OTHER PUBLIC LAND SURVEY CORNERS USED FOR PROPORTIONING AND DETERMINING THE CORNER LOCATION)
- RESTORED OR REESTABLISHED IN A LOCATION THAT DIFFERS FROM A PREVIOUS RESTORATION OR REESTABLISHMENT (INCLUDE A PLAN VIEW DRAWING AND INDICATE WHAT WAS SET AND/OR FOUND)
- CHECK IF THERE IS ADDITIONAL INFORMATION ON BACK

DESCRIBE THE MONUMENT AND ACCESSORIES USED TO PERPETUATE THE LOCATION OF THE CORNER. (INCLUDE A PLAN VIEW DRAWING AND INDICATE WHAT WAS SET AND/OR FOUND) ALSO INCLUDE FOUR TIES TO THE SECTION CORNER AND DESCRIPTION OF THE TIES.



○ SET 3/4" x 30" RE-BAR AT TIE LOCATIONS

T- 6 FOOT WHITE VINYL POST SET

BEARING REFERENCED TO MAGNETIC

COORDINATE DATUM NAD 83(2011)

N 332084.41  
 E 701502.56

219 31-13  
 INDEX NO.

CHARLEY G. BRINKMEIER

(Type or print name) CERTIFY THAT THE CORNER LOCATION SHOWN ON THIS RECORD WAS DETERMINED BY ME OR UNDER MY DIRECTION AND CONTROL AND THAT THIS U.S. PUBLIC LAND SURVEY MONUMENT RECORD IS CORRECT AND COMPLETE TO THE BEST OF MY KNOWLEDGE AND BELIEF.

*Charley G. Brinkmeier*  
 SIGNATURE

11-13-17  
 DATE