

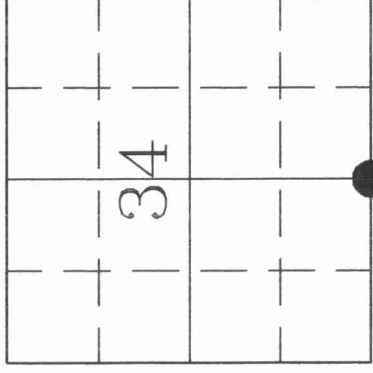
3113 34 0020

# U.S. PUBLIC LAND SURVEY MONUMENT RECORD

HISTORY OF ORIGINAL CORNER ESTABLISHMENT AND SUBSEQUENT RESTORATION AND DESCRIPTION OF ANY RECORD, MONUMENT OCCUPATIONAL, TESTIMONIAL OR OTHER EVIDENCE CONSIDERED:

THE ORIGINAL QUARTER CORNER WAS ESTABLISHED IN 1851 BY JAMES M. MARSH. ORIGINAL BEARING TREES: HEMLOCK 10" N60E 16LKS., HEMLOCK 12" N22E 10LKS., HEMLOCK 18" N12W 43LKS., HEMLOCK 20" N45W 43LKS. IN 1933, THE GLO PERFORMED A DEPENDENT RESURVEY ALONG THE SOUTH BOUNDARY OF SECTION 34, AND SET A 2" IRON PIPE AT THE S1/4 OF SEC 34, WITH A RECORD DISTANCE BETWEEN THE SE COR OF SECTION 34, T31N R13E, AND THE NE COR OF SEC 1, T30N R13E, OF 3,202.32'. ON 12/18/01, CHARLEY BRINKMEIER AND GERRY BAHAR FOUND NO EVIDENCE OF THE S 1/4 OF SEC 34. OUR MEASURED DISTANCE FROM THE FOUND SE COR OF SEC 34 AND THE FOUND NE COR OF SEC 1 WAS 3202.57'. WE THEREFORE SET A BRASS CAP LANGLADE COUNTY MONUMENT AT THE GLO PRORATED DISTANCE BETWEEN THE SE COR OF SEC 34 AND THE NE COR OF SEC 1.

● = LOCATION OF CORNER

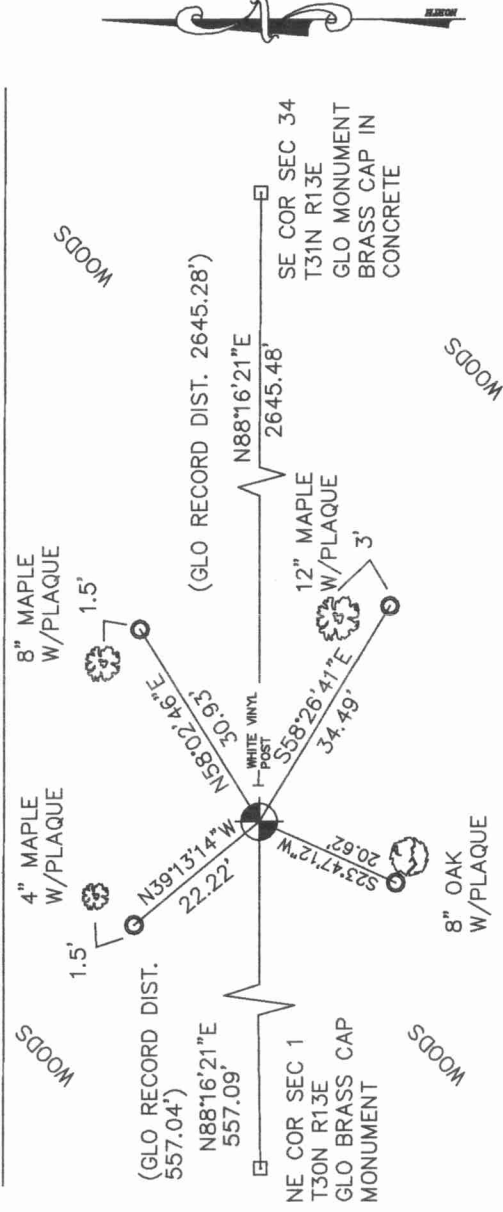


SECTION 34  
TOWNSHIP 31 NORTH, RANGE 13 EAST  
TOWN OF EVERGREEN  
LANGLADE COUNTY, WISCONSIN

- CORNER WAS: (CHECK ALL THAT APPLY)
- RESTORED THROUGH ACCEPTANCE OF AN OBLITERATED EVIDENCE LOCATION
- RESTORED THROUGH ACCEPTANCE OF A FOUND PERPETUATED LOCATION
- CONSIDERED A LOST CORNER AND REESTABLISHED THROUGH LOST CORNER PROPORTIONATE METHODS (INCLUDE A PLAN VIEW DRAWING SHOWING DISTANCES AND DIRECTIONS TO OTHER PUBLIC LAND SURVEY CORNERS USED FOR PROPORTIONING AND DETERMINING THE CORNER LOCATION)
- RESTORED OR REESTABLISHED IN A LOCATION THAT DIFFERS FROM A PREVIOUS RESTORATION OR REESTABLISHMENT (INCLUDE A PLAN VIEW DRAWING AND INDICATE WHAT WAS SET AND/OR FOUND)
- CHECK IF THERE IS ADDITIONAL INFORMATION ON BACK

DESCRIBE THE MONUMENT AND ACCESSORIES USED TO PERPETUATE THE LOCATION OF THE CORNER. (INCLUDE A PLAN VIEW DRAWING AND INDICATE WHAT WAS SET AND/OR FOUND) ALSO INCLUDE FOUR TIES TO THE SECTION CORNER AND DESCRIPTION OF THE TIES.

LOGGING ROAD 30' +/- NORTH OF S 1/4 CORNER



SET LANGLADE COUNTY BRASS CAP MONUMENT @ S1/4 COR. LOCATION

SET 3/4"X30" REBAR @ TIES

DANIEL E. HIGGINBOTHAM

(Type or print name) CERTIFY THAT THE CORNER LOCATION SHOWN ON THIS RECORD WAS DETERMINED BY ME OR UNDER MY DIRECTION AND CONTROL AND THAT THIS U.S. PUBLIC LAND SURVEY MONUMENT RECORD IS CORRECT AND COMPLETE TO THE BEST OF MY KNOWLEDGE AND BELIEF.

*Daniel E. Higginbotham*

SIGNATURE

3/19/02

DATE



215 31-13  
INDEX NO.

