

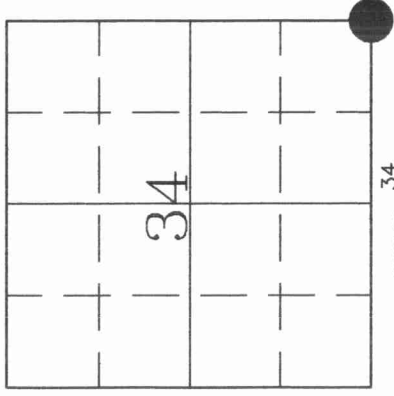
3113 34 0000

# U.S. PUBLIC LAND SURVEY MONUMENT RECORD

HISTORY OF ORIGINAL CORNER ESTABLISHMENT AND SUBSEQUENT RESTORATION AND DESCRIPTION OF ANY RECORD, MONUMENT OCCUPATIONAL, TESTIMONIAL OR OTHER EVIDENCE CONSIDERED:

THE ORIGINAL CORNER WAS ESTABLISHED IN 1851 BY JAMES M. MARSH. ORIGINAL BEARING TREES: BIRCH 10", N7E, 45LKS.; BIRCH 9" N1E, 27LKS., BIRCH 8" N33W, 34LKS., HEMLOCK 16" N40W, 40LKS. THE GLO PERFORMED A DEPENDENT RESURVEY ALONG THE SOUTH BOUNDARY OF SECTION 34 AND SET A BRASS CAP IN CONCRETE AT THE SE COR OF SECTION 34. ON 12/18/01, CHARLEY BRINKMEIER AND GERRY BAHAR FOUND THE MONUMENT IN A SWAMP NEAR THE TOE OF A NE FACING SLOPE, AND RETIED.

● = LOCATION OF CORNER

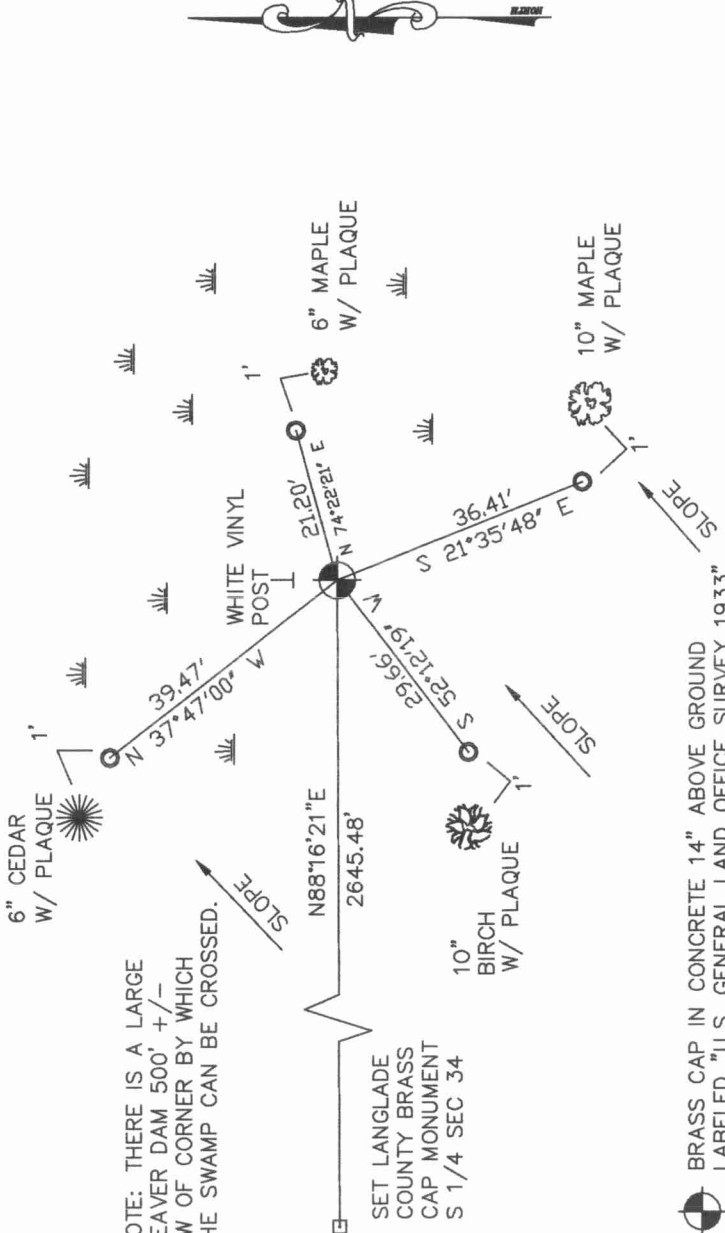


SECTION 34  
TOWNSHIP 31 NORTH, RANGE 13 EAST  
TOWN OF EVERGREEN  
LANGLADE COUNTY, WISCONSIN

CORNER WAS: (CHECK ALL THAT APPLY)

- RESTORED THROUGH ACCEPTANCE OF AN OBLITERATED EVIDENCE LOCATION
- RESTORED THROUGH ACCEPTANCE OF A FOUND PERPETUATED LOCATION
- CONSIDERED A LOST CORNER AND REESTABLISHED THROUGH LOST CORNER PROPORTIONATE METHODS (INCLUDE A PLAN VIEW DRAWING SHOWING DISTANCES AND DIRECTIONS TO OTHER PUBLIC LAND SURVEY CORNERS USED FOR PROPORTIONING AND DETERMINING THE CORNER LOCATION)
- RESTORED OR REESTABLISHED IN A LOCATION THAT DIFFERS FROM A PREVIOUS RESTORATION OR REESTABLISHMENT (INCLUDE A PLAN VIEW DRAWING AND INDICATE WHAT WAS SET AND/OR FOUND)
- CHECK IF THERE IS ADDITIONAL INFORMATION ON BACK

DESCRIBE THE MONUMENT AND ACCESSORIES USED TO PERPETUATE THE LOCATION OF THE CORNER. (INCLUDE A PLAN VIEW DRAWING AND INDICATE WHAT WAS SET AND/OR FOUND) ALSO INCLUDE FOUR TIES TO THE SECTION CORNER AND DESCRIPTION OF THE TIES.



● BRASS CAP IN CONCRETE 14" ABOVE GROUND LABELED "U.S. GENERAL LAND OFFICE SURVEY 1933"

○ SET 3/4" X 30" REBAR AS TIES

DANIEL E. HIGGINBOTHAM

(Type or print name) CERTIFY THAT THE CORNER LOCATION SHOWN ON THIS RECORD WAS DETERMINED BY ME OR UNDER MY DIRECTION AND CONTROL AND THAT THIS U.S. PUBLIC LAND SURVEY MONUMENT RECORD IS CORRECT AND COMPLETE TO THE BEST OF MY KNOWLEDGE AND BELIEF.

*D. Higginbotham*  
SIGNATURE

3/19/02  
DATE



217 31-13

INDEX NO.

